



United Pacific

CLASSIC CAR & TRUCK

2021 New Product Collection





United Pacific

HOW TO ORDER

To order from United Pacific Industries, you must be an authorized dealer, distributor or OEM. If you are not authorized to stock and sell United Pacific products, you must order through an authorized dealer. Please call 866.327.5288 for more information.

CONTACT US



8 am - 4:30 pm PST



866.327.5288 / 562.425.5588



888.986.6088 / 562.425.3632



Antique@upauto.com



UPauto.com



3788 E. Conant St., Long Beach, CA 90808



QUALITY

With over 30 years of experience in the automotive aftermarket industry, United Pacific Industries understands the rigors and stresses that our products are subjected to on the road. It is our mission to provide our customers with products of superior quality and reliability. In achieving this goal, United Pacific only partners with manufacturing facilities that conforms to our quality control requirements and standards. Our manufacturing partners meet or exceed ISO-9001 requirements. In addition, United Pacific's manufacturing partners must be equipped on site to perform the following quality assurance tests and maintain a track record of consistent quality and low product failure rate.

- Aging Test
- Air Tight Test
- Dust Test
- Flux Test
- Photometric Test
- Pull Force Test
- Rain Test
- Salt Spray Test
- Shock Test
- Temperature Test
- Humidity Test
- Vibration Test

Furthermore, our internal quality control structure allows us to function as the final quality control station prior to shipping. With the assistance of 3D computer technology, United Pacific can adhere to strict quality control standards during prototype creation and the production process. Our engineers and technicians perform a battery of tests to ensure that our products meet the demands of today's drivers and our goal to be first in quality.

INNOVATION

Known as the leader in innovation, United Pacific is dedicated to be the first to bring new and exciting products to the market. United Pacific's global expertise allows us to search the globe for new ideas and concepts. Not only do we search the globe for new products, United Pacific invest a significant amount of resources into our own research and development efforts. With the assistance of advance 3D scanning technology, our engineers and designers can acquire accurate and precise data in seconds.

The 3D data allows United Pacific to verify designs, perform quality assurance tests, and reverse engineer with unprecedented speed and accuracy. Digital inspection contributes to the early detection of shape problems, provides rapid feedback on design, and eliminates unnecessary work in downstream processes. Our rapid prototyping facility permits us to have a concept-to-shelf time of less than 5 months. In addition, United Pacific's 3D printing capabilities permit our designers to have physical models of their design concepts in hours. The physical models allow our designers and marketing staff to evaluate and test the viability of different design ideas. Our rapid prototyping facility allow United Pacific to compress design cycles, improve manufacturing planning, shorten concept-to-shelf time, most importantly, generate new and innovative products.

DESIGN

Located near some of the nation's most progressive automotive design centers, United Pacific established the UP Design Studio in 2002 to consolidate our position as the design leader in the automotive industry. UP Design Studio utilizes the latest generation of computer aided design (CAD) and studio/graphic software. The design studio is equipped with the newest computers and rapid prototyping systems. In addition, UP Design Studio is staffed by graduates from the nation's most prestigious design colleges. Unlike our competitors, United Pacific's design and manufacturing capabilities mean that we carry more new and original items than our competitors. The establishment of the design studio will enable us to generate even more new products with significant shorter concept-to-shelf time. The reduction in development cost mean that we can develop products utilizing design based development processes. Design based product development allows United Pacific to create new product concepts based on designs incorporating driver demands and needs instead of economic considerations. United Pacific's emphasis on design distinguishes and positions us ahead of our competitors.



WARRANTY

With LED (Light Emitting Diodes) rated at 100,000 hours of operation and solid-state construction, United Pacific's LED lights are extremely reliable and durable. Purchase with confidence, United Pacific offers a complete line of LED lighting products with extended or limited lifetime warranties. Please see the warranty policy page for more details.

INVENTORY AND SHIPPING

United Pacific carries over 20,000 items in our California distribution center. No other company in the heavy duty trucking industry can match United Pacific in the variety and range of in-stock inventories. With an order fill rate of over 98.5%, United Pacific is the largest and most reliable supplier in the industry. Our shipping department ships 96.8% of all orders within 24 hours and 98.9% within 48 hours. United Pacific's vast inventory and prompt shipping has made United Pacific the only source for our customer's chrome and lighting needs.



HARD AT WORK FOR THE ENVIRONMENT



United Pacific
132,000 sq ft

Distribution Center
Long Beach, CA

100%

reduction in potable water used for landscaping

40%

reduction in total energy use due to high-efficiency mechanical and lighting systems

82%

of construction waste was diverted from landfills

LEED ACCOMPLISHMENTS

Sustainable Sites

- On-site bicycle storage, showers and changing areas for company employees.
- Preferred parking for low-emitting, fuel-efficient and carpool vehicles.
- Storm water is infiltrated on-site and treated to remove contaminants to reduce environmental impact on local waterways.

Water Efficiency

- In addition to using reclaimed water, drought-tolerant plants and a high-efficiency irrigation system were installed to reduce the use of potable water for irrigation by 100%.

Energy and Atmosphere

- Efficient HVAC equipment and a lighting system with daylight controls reduces energy consumption by over 30%.
- Enhanced commission verifies that the building's energy and water-related systems are performing as intended by the initial design.

Indoor Environmental Quality

- Building ventilation systems was designed to provide enhanced levels of fresh outside air to building occupants.
- Interior finishes (plants, sealants, adhesives, coatings, carpet systems and composite wood) were selected with low levels of volatile organic compounds (VOCs) to reduce indoor air contamination.



NEW ITEMS

January 2021



DOT & SAE

38 LED Sequential Tail Light with Housing for 1953-56 Ford Truck

- Super bright SMD LED with high quality all red polycarbonate lens
- Features sequential function with selector switch to control sequential function off, direction left, or direction right
- Features sequence-once brake attention function
- Fully assembled with beautiful polished stainless steel or glossy black die stamped metal housing with mounting studs
- Recommended under dash flasher United Pacific 90652 (2-terminal) or 90651 (3-terminal)
- Sold individually, please specify left-hand or right-hand side



(((SEQUENTIAL)))
F · L · A · S · H

(((BRAKE)))
ATTENTION

110761	Stainless Steel	L/H - 1 Pc. / Card
110762	Stainless Steel	R/H - 1 Pc. / Card
110763	Black	L/H - 1 Pc. / Card
110764	Black	R/H - 1 Pc. / Card



DOT & SAE

38 LED Tail Light with Housing for 1953-56 Ford Truck

- Super bright SMD LED with high quality all red polycarbonate lens
- Left hand side feature additional white LED with clear lens for license plate light
- Fully assembled with stainless steel or glossy black housing with mounting studs
- Electronics completely sealed in epoxy to resist corrosion and moisture
- Solid state circuit board engineered for any 12V DC system
- Easy electrical connection with stripped wire leads
- Recommended under dash flasher United Pacific 90652(2-terminal) or 90651 (3-terminal)
- Sold individually, please specify left-hand or right-hand side

110935	Stainless Steel	L/H - 1 Pc. / Card (New)
110936	Stainless Steel	R/H - 1 Pc. / Card (New)
110759	Black	L/H - 1 Pc. / Card
110760	Black	R/H - 1 Pc. / Card



Cobra Style Interior Rearview Mirror

- Highly polished stainless steel 2-1/2" X 6" mirror head, with chrome plated mirror arm
- Perfect replica interior mirror for early Cobra's and hot rods

M1003 1 Pcs. / Color Box

NEW ITEMS

February 2021



110914



110915

Rear Fender For 1967 Chevy/GMC Stepside Truck

- Excellent steel reproduction with all of the original contour and detail
- Finished with black EDP protective coating to keep your new steel fresh and rust-free
- Precision punched mounting holes with reinforcement strip along the rolled edge
- Smooth style without side marker cutout
- Sold individually, please specify left-hand or right-hand side

110914 L/H - 1 Pc. / Box

110915 R/H - 1 Pc. / Box



110912



110913

Rear Fender For 1968-72 Chevy/GMC Stepside Truck

- Excellent steel reproduction with all of the original contour and detail
- Finished with black EDP protective coating to keep your new steel fresh and rust-free
- Precision punched mounting holes with reinforcement strip along the rolled edge
- Feature original style side marker mounting pocket
- Sold individually, please specify left-hand or right-hand side

110912 L/H - 1 Pc. / Box

110913 R/H - 1 Pc. / Box



Stainless Steel Windshield Frame Hinge For 1966-77 Ford Bronco

- High quality 304 grade 16 gauge stainless steel
- Feature machine punched holes for plug welding to windshield and cowl top panel
- Notch and large hole for wiper motor wiring pass-through

110595 1 Pc. / Bulk



18 LED Side Marker Light W/Stainless Steel Trim For 1968-72 Chevy & GMC Truck

- Super bright LED with high quality injection molded polycarbonate lens
- Original look with deluxe stainless steel trim
- Epoxy coated, fully sealed electronics designed for 12V DC systems
- Easy electrical connection with 194 plug, no modification to vehicle
- 12 volt, 2-wire hookup with .180 bullet plugs

CML6872A Amber - 1 Pc. / Card

CML6872R Red - 1 Pc. / Card



LED Chrome Vintage Style Flashlight

- Features bright 50 lumens white LED, glass lens, morse code button, and hanging loop
- Cool vintage look, all-metal construction, satin chrome finish
- Use with roller-action classic car flashlight holder, item # C5012G (sold separately)
- Requires 2 "D" cells batteries. (not included)

110917 1 Pc. / Color Box



Vintage Flashlight Holder With Roller-Action Grip, Grey

- Tightly holds flashlight within easy reach
- Secure roller-action grip
- Fits steering columns up to 1-7/8" diameter

C5012G 1 Pc. / Color Box

NEW ITEMS

March 2021

NEW



33012



33010

NEW



33011



33009

NEW



33014



33013

10 LED Dual Function 3rd Brake Light With Swivel Pedestal Base

- Polycarbonate lens sonically sealed to housing to prevent moisture intrusion
- Energy efficient solid-state circuit board engineered for 12V DC systems
- Dual function red LEDs, perfect for use as a driving and 3rd brake light
- Durable injection molded plastic housing with 180-degree swivel mounting base
- Designed with adjustable base mount for inside rear window installation
- Available in red or clear lens

Split Dual Function with Black Pedestal Base

33012 Split Function Red LED/Red Lens - 1 Pc. / Card **NEW**

Regular Dual Function with Black Pedestal Base:

33011 Dual Function Red LED/Red Lens - 1 Pc. / Card **NEW**

33014 Dual Function Red LED/Clear Lens - 1 Pc. / Card **NEW**

Split Dual Function with Chrome Pedestal Base

33010 Split Function Red LED/Red Lens - 1 Pc. / Card

Regular Dual Function with Chrome Pedestal Base:

33009 Dual Function Red LED/Red Lens - 1 Pc. / Card

33013 Dual Function Red LED/Clear Lens - 1 Pc. / Card





Tail Light For 1940 Chevy Passenger Car

- Gloss black powder coated housing with 304 stainless steel rim
- High quality glass lens
- Lens gasket, socket included
- 12V bulb and mounting hardware also included

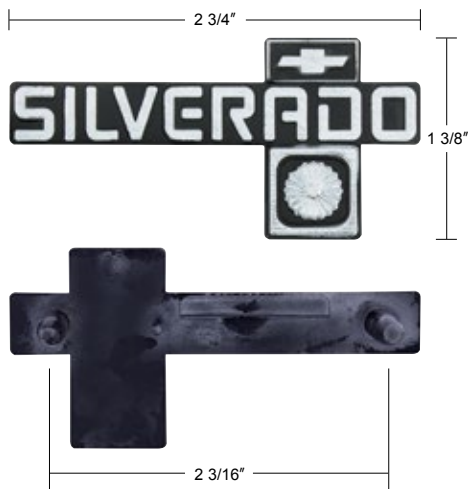
C4052 1 Pc. / Box



17 LED Tail Light For 1940 Chevy Passenger Car

- Super bright red LED with high quality injection molded polycarbonate lens
- Energy efficient solid-state circuit board engineered for 12V DC systems
- Epoxy coated, fully sealed electronics
- Includes 304 stainless steel rim, black painted steel housing, socket, bulb, and mounting hardware
- Recommended to upgrade under dash flasher to item # 90652 or 90649 LED flasher

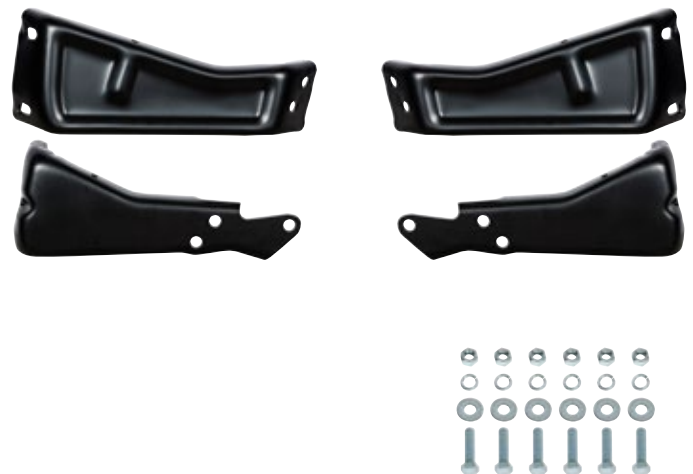
CTL4010LED-AS 1 Pc. / Box



Silverado Dash Emblem For 1981-87 Chevy Truck

- Quality plastic injection molded with chrome lettering
- Original style design with mounting studs in OE spec spacing
- Speed nuts included for easy installation
- Official GM licensed restoration product

110916 1 Pc. / Bulk



Rear Bumper Bracket Kit For 1973-80 Chevy/GMC Fleetside Truck

- Heavy gauge steel reproduction with original style strengthening contour and feature
- Black powder coated to protect against corrosion
- Precision punched mounting holes
- Mounting hardware included

110928 1 Set / Box

NEW ITEMS

April 2021

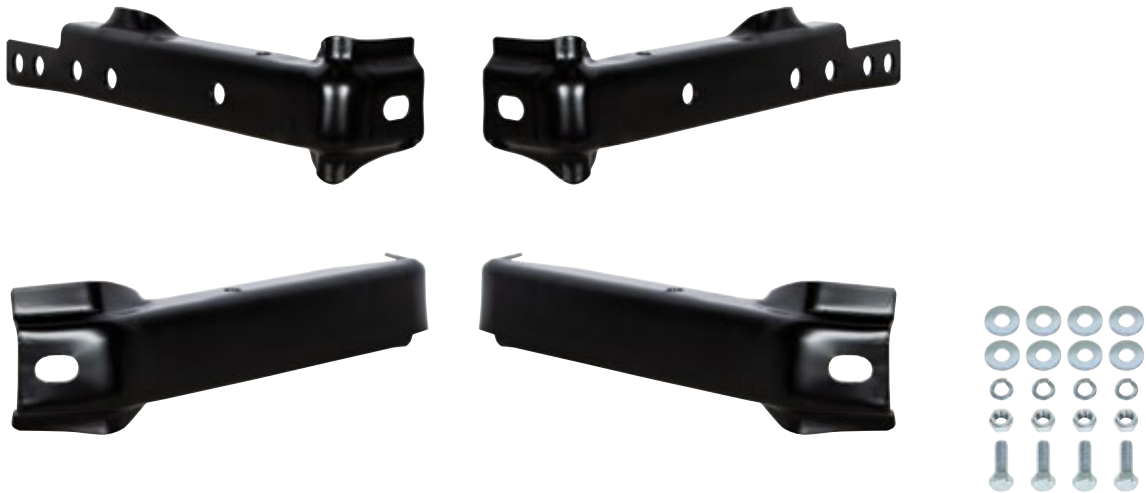


Parking Light For 1988-89 Chevrolet & GMC Truck

- Quality original style reproduction
- Injection molded rear housing
- Replacement for models with 4 sealed beam headlight system
- Also fits 1990-93 Chevy and GMC truck, additional hardware required
- Sold individually, please specify left-hand or right-hand side

110952 Driver - 1 Pc. / Box

110953 Passenger - 1 Pc. / Box



Rear Bumper Bracket Kit For 1967-72 Chevy/GMC Fleetside Truck

- Heavy duty 9 gauge steel reproduction
- Precision punched mounting holes
- Black EDP coating for durability
- Mounting hardware included

110926 1 Kit / Box

NEW ITEMS

May 2021



Outer Rocker Panel For 1967-72 Chevy & GMC Truck

- Excellent reproduction of the original rocker panel with all contour detail
- Smooth top surface finish with quality steel
- Black EDP coated to keep your new steel fresh and rust-free
- Sold individually, please choose left-hand or right-hand side

110919 Driver - 1 Pc. / Bulk

110920 Passenger - 1 Pc. / Bulk



110897

110898



Chrome Hood Hinge For 1967-72 Chevrolet & GMC Truck

- Heavy duty steel reproduction of the original hood hinge style and design
- Beautifully chrome plated with triple chrome plating process
- Stainless steel springs available separately, UP#110899

110897 L/H - 1 Pc. / Box

110898 R/H - 1 Pc. / Box



Bed Front Panel For 1967-72 Chevrolet & GMC Fleetside Truck With Steel Bed Floor

- Quality die stamped steel reproduction with 16 gauge steel
- Plain smooth style panel design
- OE style rolled over top flange with 1/4"-20 welded square nuts
- Precision punched bed side panel mounting holes
- Bottom flange made to match OE specification for use with steel bed floor

110896 1 Pc. / Box

32 PCS. CONVENIENCE PACK



Chrome Spike Hubcap Nut Cover For 1999-2018 Chevy & GMC 2500 & 3500 - Push-on (Color Box of 32)

- Quality molded plastic with beautiful long lasting chrome plating
- Sized to fit the twist-on simulated lug nut on OE steel wheel hubcap
- Fits GM lug nut #9597158, M27-2.0, Hex 22mm
- Fits various 1999-2018 Chevy/GMC trucks
- Convenience pack, includes 32 nut covers to dress up your entire truck

10351CB 32 Pcs. / Color Box

32 PCS. CONVENIENCE PACK



Chrome Cylinder Hubcap Nut Cover For 1999-2018 Chevy & GMC 2500 & 3500 - Push-on (Color Box of 32)

- Quality molded plastic with beautiful long lasting chrome plating
- Sized to fit the twist-on simulated lug nut on OE steel wheel hubcap
- Fits GM lug nut #9597158, M27-2.0, Hex 22mm
- Fits various 1999-2018 Chevy/GMC trucks
- Convenience pack, includes 32 nut covers to dress up your entire truck

10749CB 32 Pcs. / Color Box



United Pacific Cap - USA Flag United Pacific Cap

- 100% cotton twill cap
- Available in USA flag United Pacific Cap

99084 1 Pc. / Bulk



Classic LED Lighting Product Catalog 6th Edition

ACLED6 1 Pc. / Bulk



2020 Classic New Item Flyer Collection

ANF1220 1 Pc. / Bulk

NEW ITEMS

July 2021



Front Fender With Sidemarker & Emblem Holes For 1970-77 Ford Bronco

- Die stamped with high quality 19 gauge sheet metal
- Features all original fender curvature and mounting pattern
- Precision punched mounting holes for 70-77 side marker and original standard style pin-on "Bronco" fender emblem
- Finished with black EDP protective coating to keep your new steel fresh and rust-free
- Sold individually, please choose left-hand or right-hand side

110903 Driver - 1 Pc. / Box

110904 Passenger - 1 Pc. / Box



110308

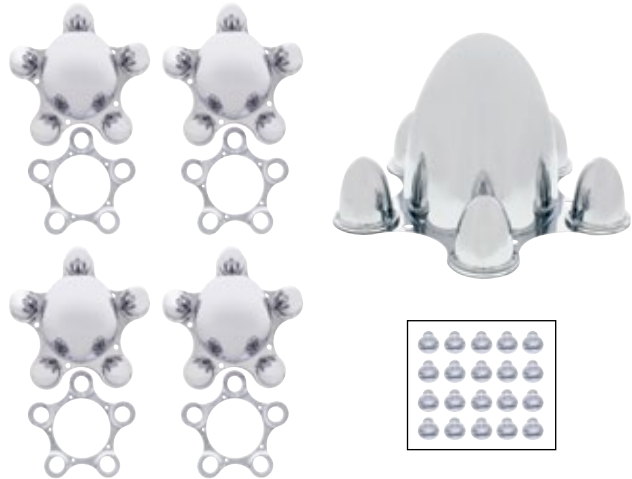
110309

Glove Box Liner For 1973-91 Chevy/GMC Truck

- Quality molded ABS plastic reproduction with original contour and mounting hole patterns
- Feature original contour, mounting hole patterns, and lock cylinder pass-through
- Perfect for replacing that old worn out liner
- Available for truck with or without factory air conditioning

110308 With AC - 1 Pc. / Box

110309 Without AC - 1 Pc. / Box



Chrome Vintage Spider Wheel Hub Cover (4/Set)

- Beautiful high quality chrome plated finish with triple chrome plating process
- Best on the market, made of die-cast metal, not plastic
- Comes complete with mounting hardware
- These fit on most wheels to give your vehicles the cool look
- Set of four

C8056 5 x 4-3/4" - 1 Set / Box **New & Improved**

C8057 5 x 4-1/2" - 1 Set / Box **New & Improved**

C8061 5 x 5" - 1 Set / Box

C8062 5 x 5-1/2" - 1 Set / Box

NEW ITEMS

August 2021



Front Bumper Bracket Kit For 1967-70 Chevy & 1967-72 GMC 2WD Truck

- Heavy duty 1/8" thick steel reproduction
- Original style bumper mounting holes
- Black EDP coating for durability
- Kit include 2 top mount brackets and 2 outer brackets
- Welded 1/2"-13 nut on top mount brackets for frame installation
- Shorter outer brackets for 1967-70 Chevrolet and 1967-72 GMC 2-wheel drive trucks
- 1/2"-13 mounting hardware also included

110925 1 Set / Box



Front Bumper Bracket Kit For 1971-72 Chevy 2WD Truck

- Heavy duty 1/8" thick steel reproduction
- Original style bumper mounting holes
- Black EDP coating for durability
- Kit include 2 top mount brackets and 2 outer brackets
- Welded 1/2"-13 nut on top mount brackets for frame installation
- Longer outer brackets for 1971-72 Chevrolet 2-wheel drive trucks
- 1/2"-13 mounting hardware also included

110927 1 Set / Box



110931



110932

Inner Front Bumper Bracket For 1981-87 Chevy/GMC Truck

- Heavy duty 5/32" thick steel reproduction
- Original style bumper mounting holes
- Black EDP coating for durability
- Sold individually, please specify left-hand or right-hand side

110931 R/H - 1 Pc. / Bulk

110932 L/H - 1 Pc. / Bulk



110934



110933

Outer Front Bumper Bracket For 1981-87 Chevy/GMC Truck

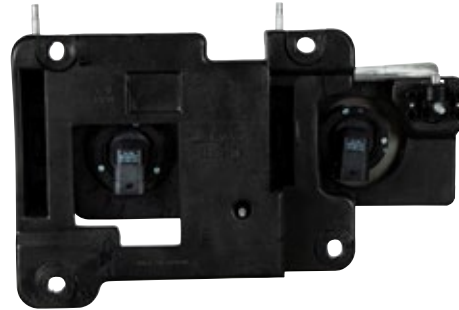
- Heavy duty 5/32" thick steel reproduction
- Original style bumper mounting holes
- Feature 7/16"-14 welded nuts for frame installation
- Black EDP coating for durability
- Sold individually, please specify left-hand or right-hand side

110933 R/H - 1 Pc. / Bulk

110934 L/H - 1 Pc. / Bulk

NEW ITEMS

September 2021



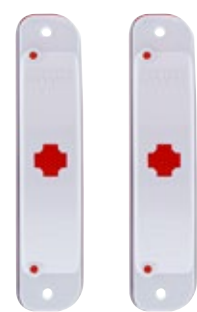
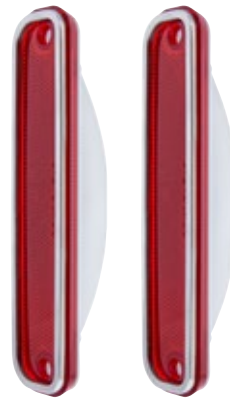
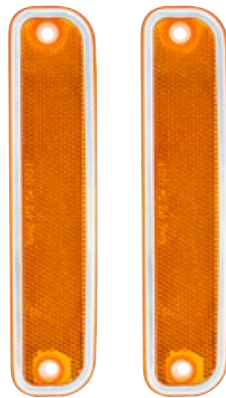
Composite Type Headlight With Bracket For 1990-1998 Chevrolet & GMC Truck

- High quality injection molded polycarbonate lens
- Includes an excellent OE spec mounting bracket and adjustment post
- Replaceable 9005/HB4 and 9006/HB3 halogen bulbs
- Fits 1990-1998 1500 series, 1990-2000 2500 series, and 1990-2001 3500 series
- Also fits 1992-1999 Chevy Tahoe/Blazer, GMC Yukon, and Chevy/GMC Suburban

110954 L/H - 1 Pc. / Box

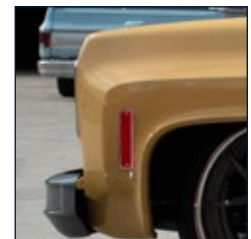
110955 R/H - 1 Pc. / Box

Recommended Item: 9005/9006 Headlight Relay Harness (Item #34264)



Side Marker Light With Stainless Steel Trim For 1973-80 Chevrolet Truck (Card of 2)

- High quality polycarbonate lens with original style lens pattern
- Features highly polished stainless steel deluxe style trim
- Durable plastic rear housing with OE style light socket opening (socket & bulb not included)
- Easy installation, mounts directly onto fender side marker pocket like OE
- Also fits 1973-91 Chevy & GMC Suburban, Crew Cab dually, Chevy Blazer, and GMC Jimmy
- Fits L/H or R/H side
- Available in red, amber, or clear lens



110541 Clear Lens - 2 Pcs. / Box

110542 Amber Lens - 2 Pcs. / Box

110543 Red Lens - 2 Pcs. / Box

Recommended Items: Side Marker Socket (Item #C679101), Incandescent Bulbs (Item #30943) and LED Bulbs (Item #36920)



Tail Light Assembly With Anodized Aluminum Trim For 1973-87 Chevy & GMC Truck (Pair)

- High quality injection molded polycarbonate red tail light and clear backup light lens
- Features original style lens pattern with beautiful anodized aluminum trim
- Plastic back housing with original contour and bulb socket mounting pockets
- Durable gasket included to help prevent moisture and dust intrusion
- Original installation design, easily swap out that damaged and faded tail light assembly
- Also fits 1973-89, 3/4-ton Crew Cab and 1973-91, 1-ton Crew Cab

110544 Pair / Box



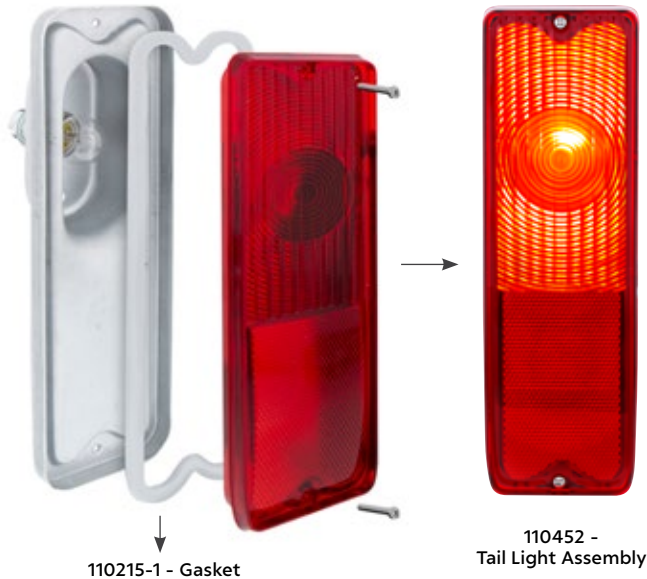
Chrome Vintage LED Flashlight With Roller-Action Holder

- Features bright white LED, glass lens, morse code button, and hanging loop
- Holder has classic hammertone finish with roller-action grip
- Holder fits 1-7/8" diameter steering columns
- Uses 2 "D" cell batteries (not included)

110918 1 Pc. / Box

NEW ITEMS

October 2021



110215-1 - Gasket

110452 - Tail Light Assembly



Tail Light Assembly For 1967-72 Chevy & GMC Fleetside Truck

- Fully assembled with steel reproduction housing and polycarbonate lens
- Galvanized stamped steel housing eliminates rust and corrosion
- Great looking original style replacement lens (no GM markings)
- Pre-assembled with clear 1157 bulb and white foam rubber gasket
- Fits left-hand or right-hand side. Sold each
- Socket wiring pigtail sold separately, part #C606615

110452 1 Pc. / Box

Tail Light Lens Gasket For 1967-72 Chevy & GMC Truck

- Fits between tail light housing and lens
- White foam rubber as original
- Die cut to the exact shape and size as original to provide a nice tight seal

110215-1 1 Pc. / Each



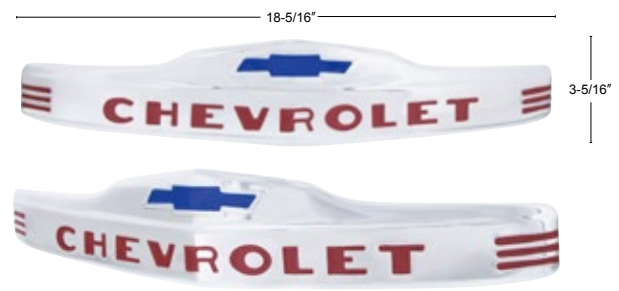
110699 - Red Lens Only

110126 - LED Insert
Sold Separately

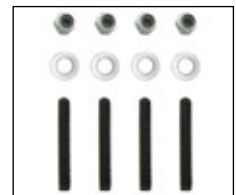
Tail Light Lens For 1967-72 Chevy & GMC Panel Truck & Suburban

- Great looking replacement lens with original reflective designs
- Injection molded from high quality red polycarbonate plastic
- Fits both left and right hand side

110699 1 Pc. / Card



GM Restoration Parts



Stainless Steel "CHEVROLET" Hood Emblem For 1947-53 Chevrolet Truck

- Highly polished stainless steel
- Die stamped with original style bow-tie and lettering
- Official GM licensed restoration product

110889 1 Pc. / Each



110937

Door Window Beltline Felt For 1967-72 Chevy & GMC Truck

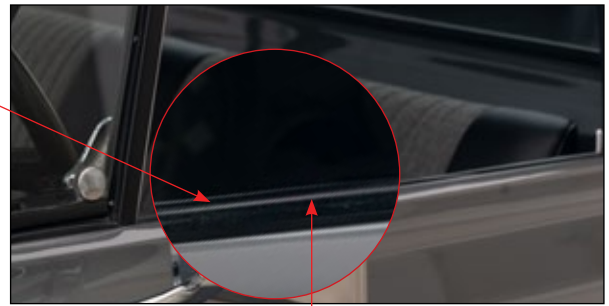
- High quality rubber and plastic reproduction of the original with steel core and black felt
- Feature OE type metal retaining clips
- Perfect for replacing the old wore out door window beltline weatherstrip

110937 L/H - Inner Door 1 Pc. / Each

110938 R/H - Inner Door 1 Pc. / Each

110939 L/H - Outer door 1 Pc. / Each

110940 R/H - Outer door 1 Pc. / Each



110940



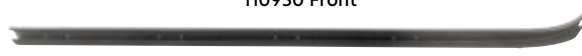
110944 Front



110944 Back



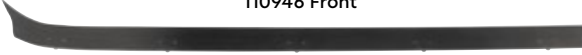
110950 Front



110950 Back



110946 Front



110946 Back



Door Window Beltline Felt For 1973-87 Chevy & GMC Truck

- High quality plastic reproduction of the original with steel core and black felt
- Feature OE type metal retaining clips
- Perfect for replacing the old wore out door window beltline weatherstrip

110944 L/H - 1973-80 Inner Door 1 Pc. / Each

110945 R/H - 1973-80 Inner Door 1 Pc. / Each

110950 L/H - 1981-87 Inner Door 1 Pc. / Each

110951 R/H - 1981-87 Inner Door 1 Pc. / Each

110946 L/H - 1973-87 Outer door 1 Pc. / Each

110947 R/H - 1973-87 Outer door 1 Pc. / Each



48" X 36" UPcarparts Banner

- Banner for United Pacific classic parts and accessories
- Dimensions approximately = 48" wide X 36" length

99217 1 Pc. / Each

NEW ITEMS

November 2021



4
LEDs



4 White LED License Plate Light With 304 Stainless Steel Bracket For 1966-77 Ford Bronco

- Highly polished 16 gauge stainless steel bracket
- Pre-assembled with 4 white LEDs 1-1/2" round license plate light
- Original style retaining tabs and mounting screw hole position
- Fits over existing license plate light mounting hole
- Simple wiring with 2 wire leads

110922 1 Pc. / Card



Tail Light For Ford Bronco (1980-88) & Truck (1980-86)

- Quality plastic lens with original reflective features and detail
- Special protective coating on lens to prevent UV caused fading and hazing
- Durable rear housing with OE light socket type openings
- DOT/SAE, FMVSS 108

111016 L/H - 1 Pc. / Box

111017 R/H - 1 Pc. / Box



Hood Hinge With Spring For 1981-1987 Chevy & GMC Truck

- Heavy duty steel reproduction of the original hood hinge with pre-installed clock spring and machine riveted mounting plates
- Precision punched mounting holes for easy and straight forward installation
- Feature original style strengthening ribs design
- Finished with black EDP protective coating to keep your new steel fresh and rust-free
- Also fits 1981-1991 Chevy Blazer and GMC Jimmy, 1987-1991 Chevy & GMC Suburban

110993 L/H 1 Pc. / Each

110994 R/H 1 Pc. / Each

NEW ITEMS

December 2021



Chrome 5 on 5-1/2" Vintage Spider Wheel Hub Cover (4/Set)

- Beautiful high quality chrome plated finish with triple chrome plating process
- 5 on 5-1/2" bolt pattern
- Best on the market, made of die-cast metal, not plastic
- Comes complete with mounting hardware
- These fit on most wheels to give your vehicle a cool look
- Set of four

C8062 4 Pcs. / Set



SEMA 2021 United Pacific K5 Blazer T-Shirt

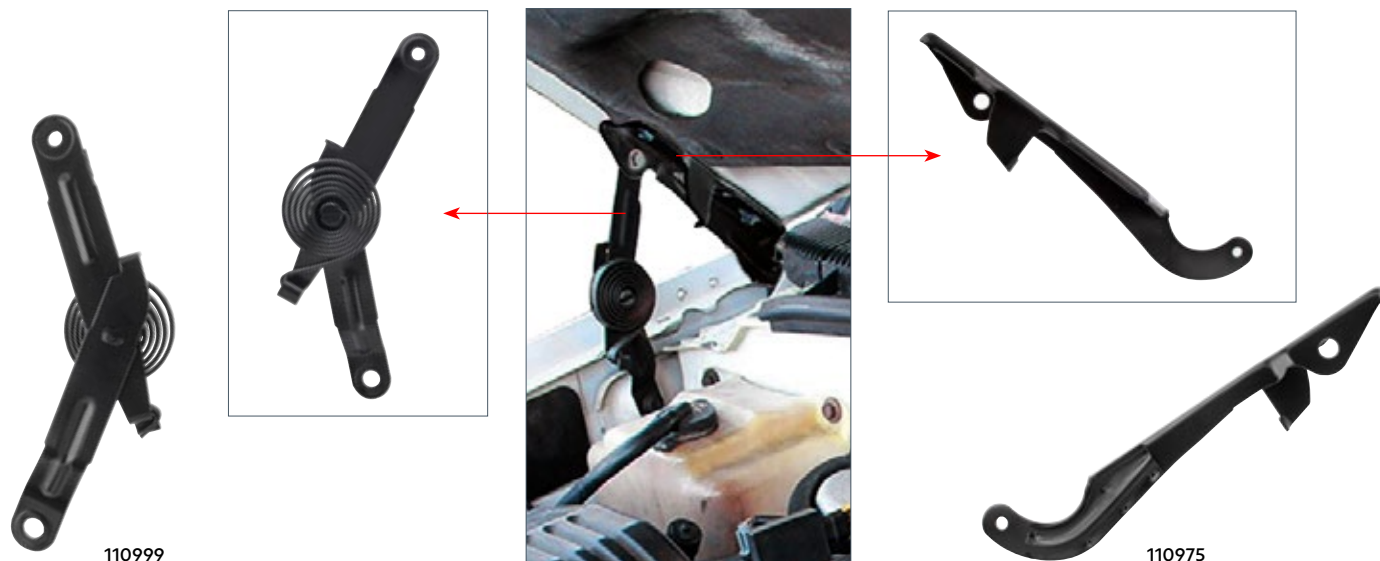
- Smoke gray tee featuring John Oro's K5 Blazer illustration on the back
- 100% cotton
- Printed in the USA

99305M M 1 Pc. / Each

99305L L 1 Pc. / Each

99305XL XL 1 Pc. / Each

99305XXL XXL 1 Pc. / Each



Hood Hinge Spring and Hood Hinge Bracket for 1988-1999 Chevy & GMC Truck

- Heavy duty steel reproduction with original style strengthening ribs
- Precision punched mounting holes for easy and straight forward installation
- Finished with black EDP protective coating to keep your new steel fresh and rust-free
- Also fits 1992-1994 Chevy Blazer and GMC Jimmy, 1992-1999 Chevy & GMC Suburban, and 1992-2000 GMC Yukon

110998 Hood Hinge Spring Assembly - L/H 1 Pc. / Each

110999 Hood Hinge Spring Assembly - R/H 1 Pc. / Each

110974 Hood Hinge Bracket - L/H 1 Pc. / Each

110975 Hood Hinge Bracket - R/H 1 Pc. / Each

Terms & Conditions for Wholesale

New Accounts

Initial buy-in amount and/or quantity is to be determined by United Pacific Industries, UPI hereafter. All initial orders must be prepaid in advance by Cashier's Check or VISA/MC/AMX. All new/potential accounts must complete a UPI "New Dealer Info/Credit Form" and follow the Dealer Qualification Instructions. Upon completion of the credit application, approved accounts will be assigned payment terms of NET 30 Days (from invoice date). Accounts denied a credit line will be required to prepay in advance by Cashier's Check, ACH or Bank wire or VISA/MC/AMX.

Payment Terms

Term Accounts: Accounts with NET 30 Days terms are required to submit payment within the 30 days from the date of invoice. Acceptable forms of payment include checks, ACH (Automated Clearing House), or wire transfer.

A service charge of 1.5% per month will be imposed on invoices not paid within the 30-day term. Delinquent accounts will be required to pay Cash-In-Advance (CIA). Checks will be accepted but orders will not be released until the check is cleared by the bank. Past due invoices will delay current orders. Please check with UPI on your account status when placing an order.

Credit Cards

Accounts denied credit terms may be given the option to pay by Visa, MasterCard or American Express. The credit card will be charged upon shipment. A 3% service fee will be added to the invoice. Credit card payments will not be accepted once an order has been shipped. UPI does not accept Discover card.

COD

There is no COD payment offered.

Returned Checks

A \$30.00 NSF (Non-Sufficient Fund) fee will be assessed on each incidence a check is returned to UPI.

Ordering Guidelines

Placing Orders

New orders and PO's may be placed by any of the following methods:

Fax: (888) 986-5988

E-mail: antique@upauto.com

Telephone: In order to minimize errors, dealers are encouraged to submit their orders by fax or mail.

Telephone orders are generally not preferred as to minimize errors. Utilize one of the methods above for placing orders.

Changes to Orders

Once orders are released for picking, changes are no longer possible. Dealers would have to submit a new PO for any additional items needed.

Canceling Orders

Cancellation of Stock orders must be submitted via fax or email within 24 hours of the order date. If the Stock order has already shipped it will be the dealer's responsibility to return the order at the dealer's own expense. A restocking fee may apply, please see "Return" policy for further detail. Drop Ship orders cannot be cancelled due to the priority processing and shipping.

Backorders

Dealers have the option of having their backorders shipped or cancelled. UPI will notify dealer as to availability of backorders and will be able to ship any backorder items dealer still needs as part of their next stock order. UPI reserves the right to cancel backorders that are 2 month or older from invoice date.

Minimum Order

A minimum order of \$50.00 is required. Orders below \$50.00 will be assessed a minimum order fee of \$10.00.

Packaging

A 10% service charge will be added to orders with special packaging or UPC barcoding requirements.

Lead Times

Standard lead time for all United Pacific Stock orders is 5 business days from the receipt of the purchase order. Larger Stock orders may require a lead time of up to 7 business days. Drop Ship orders generally ship in 2 business days or less. Transit time of 3-5 business days must be considered when placing orders. UPI cannot be responsible for delays in shipment after an order leaves our warehouse. UPI will work to resolve delays with freight forwarding firms, however, delays do arise from time to time due to weather and unforeseen circumstances beyond UPI's control. Express orders are exempt; please view Freight/Shipping Policy for further detail.

Order Confirmation

United Pacific will acknowledge receipt of orders by email or EDI within 1 business day of receiving the PO. If confirmation is not received, please contact UPI to ensure your order was received.

Freight

Prepaid Freight

Stock orders between \$.01 and \$1,499.99 (US Lower 48 States and Canada), \$.01 and \$2,899.99 (Alaska and Hawaii), [all price net US\$], will be shipped FOB Long Beach, California. Stock orders of \$1,500.00 (US Lower 48 States and Canada), \$2,800.00 (Alaska and Hawaii), [all price net US\$], or more will be shipped Freight Prepaid Ground to a single location only. Exclusions on prepaid: 1) B20000-A, -B, -C, -D, -E 1932 5W Body, Bronco Hood #110460, 110461, 110462 and C-10 Bed #110839 items always ship freight collect 2) Express NDA and 2-day orders, Special Net Pricing orders, and Special Quote Pricing orders ship FOB Long Beach. All drop shipment orders will be assessed a 5% processing fee. Drop shipment processing fee will be automatically added to the invoice without notice. No freight allowance or prepaid freight will be permitted for any drop shipment. All drop ship orders, regardless of order size, are FOB Long Beach, CA.

A minimum order of \$50.00 is required. Orders below \$50.00 will be assessed a minimum order fee of \$10.00. United Pacific reserves the right to select the carrier of our choice. Freight paid orders do not include extra services such as liftgate fee.

Will Call Orders

Will Call orders can be picked up in 1-3 days after placing the order. Dealers will receive their scheduled pick-up time in the order confirmation. Dealers should always call ahead to confirm when order will be ready. Sorry no same-day pick-up allowed. Will Call hours are 8:30AM - 4:00PM PST.

Shipping Policy

International Shipments

Shipments to locations outside the continental United States will be shipped to the dealer's shipping agent or broker within the continental United States in accordance with the US freight policy. International dealers will be responsible for the duties and taxes of their respective country.

Express Orders

All express orders, such as Next Day, Second Day, 3 Day Service & Will Call, must be emailed, faxed, or sent via EDI. Order confirmation will be sent to the dealer for final approval. If confirmation is not received, please contact UPI to ensure your order was received. Dealers are required to sign off on express orders and send confirmation back to UPI. Cut off for express order is 10:00AM PST (Pacific Standard Time). Express orders received after 10:00AM PST will ship the next business day. Please contact UPI to confirm projected shipping date or will call time. Due to the high cost of express shipments, dealer may request UPI to notify them of freight charges. If dealer does not request confirmation, UPI will ship the express order.

Drop Shipments

All drop shipment orders will be assessed a 5% handling fee and will be automatically added to the invoice without notice. All drop shipment orders must be emailed, faxed, or sent via EDI. No freight allowance or prepaid freight will be permitted for any drop shipment; thus, all drop ship orders regardless of order size, are FOB Long Beach, CA.

Claims

General Policy

All claims (Shortage, Mis-Shipped, Damage, Overage, Dealer Error & Billing Error) must be submitted to UPI within 3 business days of the receipt of shipment. Claims submitted beyond 3 business days of the receipt of shipment will be voided by UPI.

On all shipments, the person who signs and receives the shipment is responsible for noting on the Bill of Lading, in writing, whether any boxes arrived damaged or shorted. Failure to do so will void all claim rights between all parties. UPI will have no recourse against the trucking company if dealer does not note any damages or shortages on the Bill of Lading.

The dealer's receiving department must count and sign for the exact number of boxes received. Failure to follow the above instructions will void all claim rights between all parties.

Shortages / Mis-Ships / Damages

While UPI strives to fill every order with 100% accuracy, on occasion an item may get shipped in error or get damaged during shipping. In the event this occurs, please follow the process below. Note: This type of claim must be reported to UPI within three (3) business days of receiving the order.

1. Contact the United Pacific office to initiate the claim. To make it easy for you we have two acceptable methods for requesting the claim:

By e-mail : returns@upauto.com

By fax : (888) 986-5988

Note• *To ensure you receive a timely credit, we cannot accept claim requests by phone.*

2. You will be required to provide the following information:

Your business name

Contact name and telephone number (in case we have questions)

Date the order was received

A copy of the Packing List / Invoice noting the item number and quantity that was shipped in error or damaged during shipping.

Special instructions you have for us.

3. UPI will send a return label so you can ship the items back.

4. Once we receive the miss-shipped/damaged item(s) a credit will be issued to your account on the next billing cycle.

Shortages will be credit to the Dealers' account, unless dealer would like the shortages replaced.

Overages

UPI strives to provide our dealers with the best dealer service and products, in turn we would greatly appreciate any help from dealer in notifying UPI of any shipping overages. Dealers will be offered the option of retaining the merchandise or returning the merchandise to UPI at UPI's expense. If the items are to be returned, an RMA number and return shipping label will be provided.

Dealer Errors

Any item or quantity ordered in error by the dealer may be returned by contacting UPI for a RMA number.

1. We have two acceptable methods for requesting the RMA:

By e-mail : returns@upauto.com

By fax : (888) 986-5988

Note• *To ensure you receive a timely credit, we cannot accept claim requests by phone.*

2. You will be required to provide the following information.

Your business name

Contact name and telephone number (in case we have questions)

A list of the items number and quantity ordered in error

Special instructions you have for us

3. UPI will review the request to ensure the products are within the return period.

4. Once we have validated the request, United Pacific will issue an RMA number to the dealer. In issuing the RMA approval, the following conditions will apply:

Returned items are subject to a 20% re-stocking fee.

Return shipping costs are the responsibility of the dealer.

Items must not have any retail/price sticker on exterior package/box/card or they will be returned to the dealer at dealer's expense and no credit given.

Items must be in good condition with original packaging intact, unblemished and in re-sellable condition, or they will be returned to the dealer at dealer's expense and no credit given.

Allow up to 30 days for the credit to be issued from the time the returned items are received.

Billing Errors

Billing errors should be reported to UPI within 3 business days of invoice receipt. Dealers are asked to provide the invoice number, part number, and quantities in question. Once verified, UPI will issue a credit or an invoice for the difference in billing error.

Warranty

General Policy

UPI offers a NO HASSLE WARRANTY RETURN policy. Warranty claims can only be submitted through an authorized UPI Distributor. UPI warranty is not transferable and applies to the original installation and purchase only. UPI warranty varies by product and each item's warranty period is stated on UPI's product web page. In no event shall UPI be liable for incidental or consequential damages, nor shall UPI be liable for any claims or damages arising out of or connected with the UPI warranty which exceed the purchase price of the products.

There are no warranties, expressed or implied (including any warranty of merchantability or fitness) that extend beyond this warranty. The warranty does not apply to costs associated with the loss of use of the product, loss of time, inconvenience, commercial loss, incidental or consequential damages. The warranty does not apply to products which are damaged or made defective by faulty or incorrect installation. UPI reserves the right to alter the designs of products without assuming any obligation to modify previously manufactured products and will only replace warrantied products with redesigned products.

Warranty does not apply to merchandise that has been drilled, cut, welded, modified in any way or installed contrary to normal installation and usage. In addition, UPI cannot be held liable for damages caused by road hazards, accidents, misuse, neglect, water intrusion, abuse or corrosive environments including acid washes and highway snow/ice chemicals which can cause discoloration and corrosion in aluminum, chrome, stainless steel and light products. UPI reserves the right to credit returned merchandise at the initial purchase price or at the current selling price, which price ever is lower.

Aluminum / Chrome / Stainless Steel Products

Aluminum, chrome, and stainless steel products carry either a limited 6 month warranty, or a limited 1 year warranty (from invoice date) against defects in material or workmanship. Check the product page on our website for specific warranty period.

All Grill Guards (Item # 80000): A) Stainless Steel Materials and factory workmanship of the product itself carry a Limited Lifetime warranty. B) The Stainless steel polish and finish has a 12 month warranty. C) This warranty is provided only to the original purchaser/consumer, and on the original installation. Warranty is not transferable. Product failure or breakage due to accident/wreck or improper installation is not covered.

All mounting kits (Item # 80001, 80002, 80003, 80004, 80005): A) Steel Materials and factory workmanship on the sub-assembly bracket are Lifetime warranty. B) The painted or zinc finish has a 12 month warranty. C) Any ancillary components and parts (e.g. washers, bolts, spacers, etc.) which are not part of the sub-assembly, carry a 12 month warranty. D) This Warranty is provided only to the original purchaser/consumer, and on the original installation. Warranty is not transferable. Product failure or breakage due to accident/wreck or improper installation is not covered.

Train Horns/Whistles

UPI will not warranty damages or discolorations caused by road hazards, accidents, misuse, or corrosive chemicals, including, acid washes and highway snow/ice solvents. Corrosive chemicals will cause discoloration. UPI will only warranty horns mounted horizontally behind the CAB/SLEEPER on the frame deck. UPI will NOT warranty horns mounted upside down or underneath of the truck. Mounting horns upside down or underneath the truck will

subject the horns to road hazards & debris. This product is intended solely for the purpose of Off-road use. Check federal laws and/or regulations in your state, county, and/or municipality regarding installation and use of this product.

Lighting Products

Incandescent Lighting:

All incandescent lighting products carry a limited 12 month warranty (from invoice date) against defects in material or workmanship. The limited 12 month warranty does not apply to several applications, such as, buses, construction equipment, and off road vehicles.

LED Lighting:

All LED lighting products carry a specific Limited Warranty (from invoice date) against defects in material or workmanship.

LED with vehicle specific application is limited lifetime warranty to an original purchaser with receipt. Examples of lifetime warranty product: CTL5720LED CTL5720LED for 1957 Chevy, FTL3201LED-L for 1932 Ford.

LED Marker, 2", 2-1/2", 4", 7", Oval & Square Lights - Varies from 2 years to 10 years to Limited Lifetime, depending on specific item.

The housing, bezel or mounting base on any light made from Chrome/Stainless carries a 6 month limited warranty.

LED Cab Lights and Kits, Double/Single Stud Turn Signal and PB/ KW/FL/VL or non-make Turn Signals and any/all Strip Lights - Varies from 2 years to 10 years to Limited Lifetime, depending on specific item. The housing, bezel or mounting base on any light made from Chrome/Stainless carries a 6 month limited warranty.

LED Beacon, Driving, Headlights, Work & Warning Lights - Varies from 6 months to 3 years. The housing, bezel or mounting base on any light made from Chrome/Stainless carries a 6 month limited warranty.

All LED Accessory Lights (Honda, Stainless Steel Double/Single face Lights, Interior Lights, License Plate Lights, and any Accent Lights.

The housing, bezel or mounting base on any light made from Chrome/Stainless carries a 6 month limited warranty.

For any product that contains any type of light or LED, whether it is a stand alone light or LED, or part of a larger assembled item (e.g.. Rear light panel), modifying electrical wiring, sockets, lighting pigtailed and any electrical connection from the original configuration will

void the warranty of both wiring, pigtail and the light or LED unit and cannot be warranted.

Returns

General Policy

All returns must be authorized by UPI. All return requests must be faxed or e-mailed (returns@upauto.com). A RMA number (Return Merchandise Authorization Number) will be provided. Returns not possessing a valid RMA number are subject to rejection and will be returned to sender at the dealer's expense.

All dealers are encouraged to use the Warranty RMA Claim Form.

Defective Goods / Warranty Return

UPI offers our dealers a No Hassle Warranty Return. Please follow the instructions below for requesting a RMA for defective goods:

1. If any warranty issues occur, simply contact the UPI for RMA number. To make it easy for you we have three acceptable methods for requesting the RMA.

Email: returns@upauto.com

Fax: 888-986-5988

Note- To ensure you receive a timely RMA credit, we cannot accept RMA requests by phone.

2. You will be required to provide the following information:

Your business name

Contact name and telephone number (in case we have questions)

A list of the defective item number and quantity with the nature/reason of the defect

Special instructions you have for us

The enclosed fax form may be used for your convenience to request an RMA

3. UPI will review the request to ensure the products are within the stated warranty period.

4. Once we have validated the warranty items, a RMA confirmation, listing the items and cost will be faxed to the dealer within 3 business days. UPI will process the credit to your account within 30 days.

Note: The majority of time there will be no need to return the warranty product to us. However, from time to time, UPI may require some warranty products to be shipped back so we may analyze the cause of the failure. All warranty products that are required to be shipped back will be freight prepaid by UPI.

Stock Return

United Pacific Industries encourages all dealers to regularly monitor the sales volume and stock level of their inventory items. As sales trends may slow the movement of specific items, our hope is that those items are featured as "close-out specials" as to minimize stock returns. We also understand that the dealer, from time to time, may accumulate over-stock items and desire to return those. Therefore, we have adopted the following policy below.

NOTE:

Items must have been purchased by the dealer requesting the stock return.

Items must have been purchased within the preceding 12 months.

Items that have been discontinued will not be considered for return.

1. Contact the United Pacific for RMA number. We have 2 acceptable methods for requesting the RMA:

Email: returns@upauto.com

Fax: 888-986-5988

Note- To ensure you receive a timely RMA credit, we cannot accept RMA requests by phone.

2. You will be required to provide the following information:

Your business name

Contact name and telephone number (in case we have questions)

A list of the defective item number and quantity with the nature/reason of the defect

Special instructions you have for us

3. Your claim will be reviewed within 5 business days and you will be contacted by your sales representative who will discuss solutions to liquidate these slow moving items.

4. In the event United Pacific and the dealer agree to a credit in lieu of returning the items, this credit will be issued within 10 business days.

5. In the event items are returned by the dealer, United Pacific will issue an RMA number to the dealer. Once the RMA is issued, the following conditions will apply:

Returned items are subject to a 20% re-stocking fee.

Return shipping costs are the responsibility of the dealer.

Items must not have any retail/price sticker on exterior package/box/card or they will be returned to the dealer at dealer's expense and no credit given.

Items must be in good condition with original packaging intact, unblemished and in re-sellable condition, or they will be returned to the dealer at dealer's expense and no credit given.

Allow up to 30 days for the credit to be issued from the time the returned items are received.

6. Stock returns may be requested throughout the year and are subject to final approval by United Pacific.

Closeout / Discontinue

UPI will not warranty or accept returns on Closeout/Discontinue items.

Procedure:

An inventory of the merchandise being returned must accompany each return. The RMA number should be prominently displayed on each carton/box.

All Returns must be returned freight prepaid.

Ship Returns to:
 United Pacific Industries
 Attn: Returns Department
 3788 E. Conant St.
 Long Beach, CA 90808

RMA:
 Outstanding RMA's will be automatically cancelled if not used within 30 days of issuance.

Disclaimer

United Pacific Industries reserves the right to amend or update our Policies & Procedures without notice.



United Pacific

3788 E. CONANT STREET
 LONG BEACH, CA 90808
 TEL: (562) 421-3888
 FAX: (888) 986-5988
 TOLL FREE: (800) 790-6988
 UPauto.com

DEFECTIVE GOODS / WARRANTY CLAIM FORM

Date: _____
 Company Name: _____
 Address: _____
 City, State, Zip: _____
 Contact Name: _____
 Phone Number: _____
 Fax Number: _____
 Email: _____

List defective items below:

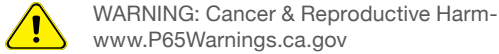
Item#	Qty	Description	Reason for Defect	Date Sold to Customer

Any special notes / Instructions for United Pacific (list here):

File your claim at:
 by email - sales@upauto.com
 by fax - (888) 986-5988

Internal Use Only	
Date Received: _____	Final RMA: _____
RMA Approval Date: _____	Credit Amount: _____
RMA Number: _____	Approved by: _____

CALIFORNIA PROPOSITION 65 WARNING



PRODUCT INDEX

ITEM#	PAGE#	ITEM#	PAGE#
33009	8	110934	14
33010	8	110935	5
33011	8	110936	5
33012	8	110937	18
33013	8	110938	18
33014	8	110939	18
99084	12	110940	18
99217	18	110944	18
110308	13	110945	18
110309	13	110946	18
110452	17	110947	18
110541	15	110950	18
110542	15	110951	18
110543	15	110952	10
110544	16	110953	10
110595	7	110954	15
110699	17	110955	15
110759	5	110974	20
110760	5	110975	20
110761	5	110993	19
110762	5	110994	19
110763	5	110998	20
110764	5	110999	20
110889	17	111016	19
110896	11	111017	19
110897	11	10351CB	12
110898	11	10749CB	12
110903	13	110215-1	17
110904	3	99305L	20
110912	6	99305M	20
110913	6	99305XL	20
110914	6	99305XXL	20
110915	6	ACLE6	12
110916	9	ANF1220	12
110917	7	C4052	9
110918	16	C5012G	7
110919	11	C8056	13
110920	11	C8057	13
110922	19	C8061	13
110925	14	C8062	13
110926	10	C8062	20
110927	14	CML6872A	7
110928	9	CML6872R	7
110931	14	CTL4010LED-AS	9
110932	14	M1003	5
110933	14		



United Pacific



UPauto.com | T 866.327.5288 | F 888.986.6088

© 2022 United Pacific Industries. All Rights Reserved. Products not shown to scale. Specifications subject to change without notice.

ANF1221

2021 Classic New Item Flyer Collection



710270063550