



United Pacific

# CLASSIC CAR & TRUCK

2021 New Product Collection







# United Pacific

## HOW TO ORDER

To order from United Pacific Industries, you must be an authorized dealer, distributor or OEM. If you are not authorized to stock and sell United Pacific products, you must order through an authorized dealer. Please call 866.327.5288 for more information.

## CONTACT US



8 am - 4:30 pm PST



866.327.5288 / 562.425.5588



888.986.6088 / 562.425.3632



Antique@upauto.com



UPauto.com



3788 E. Conant St., Long Beach, CA 90808



## QUALITY

With over 30 years of experience in the automotive aftermarket industry, United Pacific Industries understands the rigors and stresses that our products are subjected to on the road. It is our mission to provide our customers with products of superior quality and reliability. In achieving this goal, United Pacific only partners with manufacturing facilities that conforms to our quality control requirements and standards. Our manufacturing partners meet or exceed ISO-9001 requirements. In addition, United Pacific's manufacturing partners must be equipped on site to perform the following quality assurance tests and maintain a track record of consistent quality and low product failure rate.

- Aging Test
- Air Tight Test
- Dust Test
- Flux Test
- Photometric Test
- Pull Force Test
- Rain Test
- Salt Spray Test
- Shock Test
- Temperature Test
- Humidity Test
- Vibration Test

Furthermore, our internal quality control structure allows us to function as the final quality control station prior to shipping. With the assistance of 3D computer technology, United Pacific can adhere to strict quality control standards during prototype creation and the production process. Our engineers and technicians perform a battery of tests to ensure that our products meet the demands of today's drivers and our goal to be first in quality.

## INNOVATION

Known as the leader in innovation, United Pacific is dedicated to be the first to bring new and exciting products to the market. United Pacific's global expertise allows us to search the globe for new ideas and concepts. Not only do we search the globe for new products, United Pacific invest a significant amount of resources into our own research and development efforts. With the assistance of advance 3D scanning technology, our engineers and designers can acquire accurate and precise data in seconds.

The 3D data allows United Pacific to verify designs, perform quality assurance tests, and reverse engineer with unprecedented speed and accuracy. Digital inspection contributes to the early detection of shape problems, provides rapid feedback on design, and eliminates unnecessary work in downstream processes. Our rapid prototyping facility permits us to have a concept-to-shelf time of less than 5 months. In addition, United Pacific's 3D printing capabilities permit our designers to have physical models of their design concepts in hours. The physical models allow our designers and marketing staff to evaluate and test the viability of different design ideas. Our rapid prototyping facility allow United Pacific to compress design cycles, improve manufacturing planning, shorten concept-to-shelf time, most importantly, generate new and innovative products.

## DESIGN

Located near some of the nation's most progressive automotive design centers, United Pacific established the UP Design Studio in 2002 to consolidate our position as the design leader in the automotive industry. UP Design Studio utilizes the latest generation of computer aided design (CAD) and studio/graphic software. The design studio is equipped with the newest computers and rapid prototyping systems. In addition, UP Design Studio is staffed by graduates from the nation's most prestigious design colleges. Unlike our competitors, United Pacific's design and manufacturing capabilities mean that we carry more new and original items than our competitors. The establishment of the design studio will enable us to generate even more new products with significant shorter concept-to-shelf time. The reduction in development cost mean that we can develop products utilizing design based development processes. Design based product development allows United Pacific to create new product concepts based on designs incorporating driver demands and needs instead of economic considerations. United Pacific's emphasis on design distinguishes and positions us ahead of our competitors.





## WARRANTY

With LED (Light Emitting Diodes) rated at 100,000 hours of operation and solid-state construction, United Pacific's LED lights are extremely reliable and durable. Purchase with confidence, United Pacific offers a complete line of LED lighting products with extended or limited lifetime warranties. Please see the warranty policy page for more details.

## INVENTORY AND SHIPPING

United Pacific carries over 20,000 items in our California distribution center. No other company in the heavy duty trucking industry can match United Pacific in the variety and range of in-stock inventories. With an order fill rate of over 98.5%, United Pacific is the largest and most reliable supplier in the industry. Our shipping department ships 96.8% of all orders within 24 hours and 98.9% within 48 hours. United Pacific's vast inventory and prompt shipping has made United Pacific the only source for our customer's chrome and lighting needs.





HARD AT WORK FOR THE ENVIRONMENT



United Pacific  
**132,000** sq ft

Distribution Center  
Long Beach, CA

**100%**

reduction in potable water used for landscaping

**40%**

reduction in total energy use due to high-efficiency mechanical and lighting systems

**82%**

of construction waste was diverted from landfills

## LEED ACCOMPLISHMENTS

### Sustainable Sites

- On-site bicycle storage, showers and changing areas for company employees.
- Preferred parking for low-emitting, fuel-efficient and carpool vehicles.
- Storm water is infiltrated on-site and treated to remove contaminants to reduce environmental impact on local waterways.

### Water Efficiency

- In addition to using reclaimed water, drought-tolerant plants and a high-efficiency irrigation system were installed to reduce the use of potable water for irrigation by 100%.

### Energy and Atmosphere

- Efficient HVAC equipment and a lighting system with daylight controls reduces energy consumption by over 30%.
- Enhanced commission verifies that the building's energy and water-related systems are performing as intended by the initial design.

### Indoor Environmental Quality

- Building ventilation systems was designed to provide enhanced levels of fresh outside air to building occupants.
- Interior finishes (plants, sealants, adhesives, coatings, carpet systems and composite wood) were selected with low levels of volatile organic compounds (VOCs) to reduce indoor air contamination.



# NEW ITEMS

January 2021



## DOT & SAE

### 38 LED Sequential Tail Light with Housing for 1953-56 Ford Truck

- Super bright SMD LED with high quality all red polycarbonate lens
- Features sequential function with selector switch to control sequential function off, direction left, or direction right
- Features sequence-once brake attention function
- Fully assembled with beautiful polished stainless steel or glossy black die stamped metal housing with mounting studs
- Recommended under dash flasher United Pacific 90652 (2-terminal) or 90651 (3-terminal)
- Sold individually, please specify left-hand or right-hand side



((( SEQUENTIAL )))  
F · L · A · S · H

((( BRAKE )))  
ATTENTION

<b>110761</b>	Stainless Steel	L/H - 1 Pc. / Card
<b>110762</b>	Stainless Steel	R/H - 1 Pc. / Card
<b>110763</b>	Black	L/H - 1 Pc. / Card
<b>110764</b>	Black	R/H - 1 Pc. / Card



## DOT & SAE

### 38 LED Tail Light with Housing for 1953-56 Ford Truck

- Super bright SMD LED with high quality all red polycarbonate lens
- Left hand side feature additional white LED with clear lens for license plate light
- Fully assembled with stainless steel or glossy black housing with mounting studs
- Electronics completely sealed in epoxy to resist corrosion and moisture
- Solid state circuit board engineered for any 12V DC system
- Easy electrical connection with stripped wire leads
- Recommended under dash flasher United Pacific 90652(2-terminal) or 90651 (3-terminal)
- Sold individually, please specify left-hand or right-hand side

<b>110935</b>	Stainless Steel	L/H - 1 Pc. / Card (New)
<b>110936</b>	Stainless Steel	R/H - 1 Pc. / Card (New)
<b>110759</b>	Black	L/H - 1 Pc. / Card
<b>110760</b>	Black	R/H - 1 Pc. / Card



### Cobra Style Interior Rearview Mirror

- Highly polished stainless steel 2-1/2" X 6" mirror head, with chrome plated mirror arm
- Perfect replica interior mirror for early Cobra's and hot rods

**M1003** 1 Pcs. / Color Box

# NEW ITEMS

February 2021



110914



110915

## Rear Fender For 1967 Chevy/GMC Stepside Truck

- Excellent steel reproduction with all of the original contour and detail
- Finished with black EDP protective coating to keep your new steel fresh and rust-free
- Precision punched mounting holes with reinforcement strip along the rolled edge
- Smooth style without side marker cutout
- Sold individually, please specify left-hand or right-hand side

**110914** L/H - 1 Pc. / Box

**110915** R/H - 1 Pc. / Box



110912



110913

## Rear Fender For 1968-72 Chevy/GMC Stepside Truck

- Excellent steel reproduction with all of the original contour and detail
- Finished with black EDP protective coating to keep your new steel fresh and rust-free
- Precision punched mounting holes with reinforcement strip along the rolled edge
- Feature original style side marker mounting pocket
- Sold individually, please specify left-hand or right-hand side

**110912** L/H - 1 Pc. / Box

**110913** R/H - 1 Pc. / Box





**Stainless Steel Windshield Frame Hinge For 1966-77 Ford Bronco**

- High quality 304 grade 16 gauge stainless steel
- Feature machine punched holes for plug welding to windshield and cowl top panel
- Notch and large hole for wiper motor wiring pass-through

**110595** 1 Pc. / Bulk



**18 LED Side Marker Light W/Stainless Steel Trim For 1968-72 Chevy & GMC Truck**

- Super bright LED with high quality injection molded polycarbonate lens
- Original look with deluxe stainless steel trim
- Epoxy coated, fully sealed electronics designed for 12V DC systems
- Easy electrical connection with 194 plug, no modification to vehicle
- 12 volt, 2-wire hookup with .180 bullet plugs

**CML6872A** Amber - 1 Pc. / Card

**CML6872R** Red - 1 Pc. / Card



**LED Chrome Vintage Style Flashlight**

- Features bright 50 lumens white LED, glass lens, morse code button, and hanging loop
- Cool vintage look, all-metal construction, satin chrome finish
- Use with roller-action classic car flashlight holder, item # C5012G (sold separately)
- Requires 2 "D" cells batteries. (not included)

**110917** 1 Pc. / Color Box



**Vintage Flashlight Holder With Roller-Action Grip, Grey**

- Tightly holds flashlight within easy reach
- Secure roller-action grip
- Fits steering columns up to 1-7/8" diameter

**C5012G** 1 Pc. / Color Box



# NEW ITEMS

March 2021

**NEW**



**33012**



**33010**

**NEW**



**33011**



**33009**

**NEW**



**33014**



**33013**

## 10 LED Dual Function 3rd Brake Light With Swivel Pedestal Base

- Polycarbonate lens sonically sealed to housing to prevent moisture intrusion
- Energy efficient solid-state circuit board engineered for 12V DC systems
- Dual function red LEDs, perfect for use as a driving and 3rd brake light
- Durable injection molded plastic housing with 180-degree swivel mounting base
- Designed with adjustable base mount for inside rear window installation
- Available in red or clear lens

### Split Dual Function with Black Pedestal Base

**33012** Split Function Red LED/Red Lens - 1 Pc. / Card **NEW**

### Regular Dual Function with Black Pedestal Base:

**33011** Dual Function Red LED/Red Lens - 1 Pc. / Card **NEW**

**33014** Dual Function Red LED/Clear Lens - 1 Pc. / Card **NEW**

### Split Dual Function with Chrome Pedestal Base

**33010** Split Function Red LED/Red Lens - 1 Pc. / Card

### Regular Dual Function with Chrome Pedestal Base:

**33009** Dual Function Red LED/Red Lens - 1 Pc. / Card

**33013** Dual Function Red LED/Clear Lens - 1 Pc. / Card





### Tail Light For 1940 Chevy Passenger Car

- Gloss black powder coated housing with 304 stainless steel rim
- High quality glass lens
- Lens gasket, socket included
- 12V bulb and mounting hardware also included

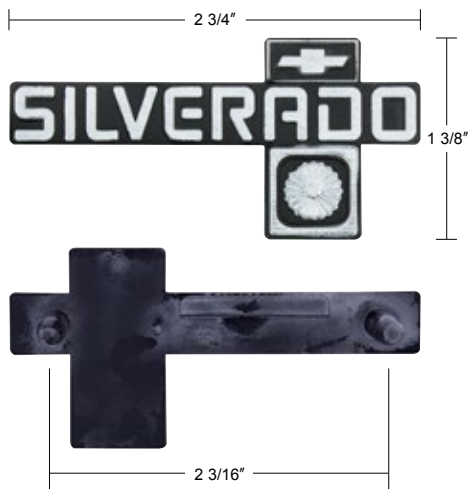
**C4052** 1 Pc. / Box



### 17 LED Tail Light For 1940 Chevy Passenger Car

- Super bright red LED with high quality injection molded polycarbonate lens
- Energy efficient solid-state circuit board engineered for 12V DC systems
- Epoxy coated, fully sealed electronics
- Includes 304 stainless steel rim, black painted steel housing, socket, bulb, and mounting hardware
- Recommended to upgrade under dash flasher to item # 90652 or 90649 LED flasher

**CTL4010LED-AS** 1 Pc. / Box



### Silverado Dash Emblem For 1981-87 Chevy Truck

- Quality plastic injection molded with chrome lettering
- Original style design with mounting studs in OE spec spacing
- Speed nuts included for easy installation
- Official GM licensed restoration product

**110916** 1 Pc. / Bulk



### Rear Bumper Bracket Kit For 1973-80 Chevy/GMC Fleetside Truck

- Heavy gauge steel reproduction with original style strengthening contour and feature
- Black powder coated to protect against corrosion
- Precision punched mounting holes
- Mounting hardware included

**110928** 1 Set / Box



# NEW ITEMS

April 2021



## Parking Light For 1988-89 Chevrolet & GMC Truck

- Quality original style reproduction
- Injection molded rear housing
- Replacement for models with 4 sealed beam headlight system
- Also fits 1990-93 Chevy and GMC truck, additional hardware required
- Sold individually, please specify left-hand or right-hand side

---

**110952** Driver - 1 Pc. / Box

---

**110953** Passenger - 1 Pc. / Box

---



## Rear Bumper Bracket Kit For 1967-72 Chevy/GMC Fleetside Truck

- Heavy duty 9 gauge steel reproduction
- Precision punched mounting holes
- Black EDP coating for durability
- Mounting hardware included

---

**110926** 1 Kit / Box

---

# NEW ITEMS

May 2021



## Outer Rocker Panel For 1967-72 Chevy & GMC Truck

- Excellent reproduction of the original rocker panel with all contour detail
- Smooth top surface finish with quality steel
- Black EDP coated to keep your new steel fresh and rust-free
- Sold individually, please choose left-hand or right-hand side

**110919** Driver - 1 Pc. / Bulk

**110920** Passenger - 1 Pc. / Bulk



**110897**

**110898**



## Chrome Hood Hinge For 1967-72 Chevrolet & GMC Truck

- Heavy duty steel reproduction of the original hood hinge style and design
- Beautifully chrome plated with triple chrome plating process
- Stainless steel springs available separately, UP#110899

**110897** L/H - 1 Pc. / Box

**110898** R/H - 1 Pc. / Box



## Bed Front Panel For 1967-72 Chevrolet & GMC Fleetside Truck With Steel Bed Floor

- Quality die stamped steel reproduction with 16 gauge steel
- Plain smooth style panel design
- OE style rolled over top flange with 1/4"-20 welded square nuts
- Precision punched bed side panel mounting holes
- Bottom flange made to match OE specification for use with steel bed floor

**110896** 1 Pc. / Box



**32 PCS. CONVENIENCE PACK**



**Chrome Spike Hubcap Nut Cover For 1999-2018 Chevy & GMC 2500 & 3500 - Push-on (Color Box of 32)**

- Quality molded plastic with beautiful long lasting chrome plating
- Sized to fit the twist-on simulated lug nut on OE steel wheel hubcap
- Fits GM lug nut #9597158, M27-2.0, Hex 22mm
- Fits various 1999-2018 Chevy/GMC trucks
- Convenience pack, includes 32 nut covers to dress up your entire truck

**10351CB** 32 Pcs. / Color Box

**32 PCS. CONVENIENCE PACK**



**Chrome Cylinder Hubcap Nut Cover For 1999-2018 Chevy & GMC 2500 & 3500 - Push-on (Color Box of 32)**

- Quality molded plastic with beautiful long lasting chrome plating
- Sized to fit the twist-on simulated lug nut on OE steel wheel hubcap
- Fits GM lug nut #9597158, M27-2.0, Hex 22mm
- Fits various 1999-2018 Chevy/GMC trucks
- Convenience pack, includes 32 nut covers to dress up your entire truck

**10749CB** 32 Pcs. / Color Box



**United Pacific Cap - USA Flag United Pacific Cap**

- 100% cotton twill cap
- Available in USA flag United Pacific Cap

**99084** 1 Pc. / Bulk



**Classic LED Lighting Product Catalog 6th Edition**

**ACLED6** 1 Pc. / Bulk



**2020 Classic New Item Flyer Collection**

**ANF1220** 1 Pc. / Bulk

# NEW ITEMS

July 2021



## Front Fender With Sidemarker & Emblem Holes For 1970-77 Ford Bronco

- Die stamped with high quality 19 gauge sheet metal
- Features all original fender curvature and mounting pattern
- Precision punched mounting holes for 70-77 side marker and original standard style pin-on "Bronco" fender emblem
- Finished with black EDP protective coating to keep your new steel fresh and rust-free
- Sold individually, please choose left-hand or right-hand side

**110903** Driver - 1 Pc. / Box

**110904** Passenger - 1 Pc. / Box



**110308**

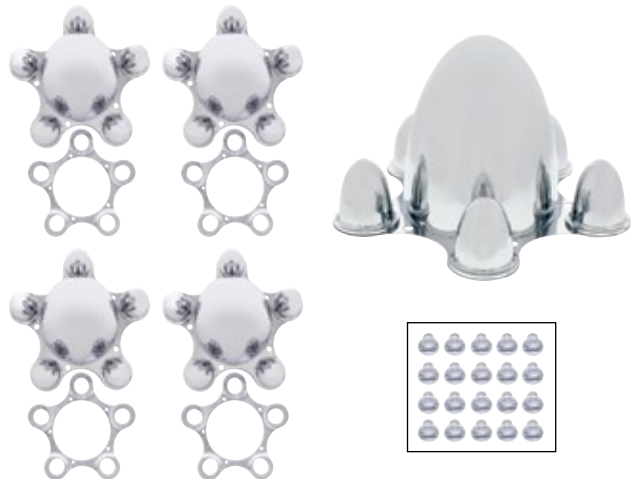
**110309**

## Glove Box Liner For 1973-91 Chevy/GMC Truck

- Quality molded ABS plastic reproduction with original contour and mounting hole patterns
- Feature original contour, mounting hole patterns, and lock cylinder pass-through
- Perfect for replacing that old worn out liner
- Available for truck with or without factory air conditioning

**110308** With AC - 1 Pc. / Box

**110309** Without AC - 1 Pc. / Box



## Chrome Vintage Spider Wheel Hub Cover (4/Set)

- Beautiful high quality chrome plated finish with triple chrome plating process
- Best on the market, made of die-cast metal, not plastic
- Comes complete with mounting hardware
- These fit on most wheels to give your vehicles the cool look
- Set of four

**C8056** 5 x 4-3/4" - 1 Set / Box **New & Improved**

**C8057** 5 x 4-1/2" - 1 Set / Box **New & Improved**

**C8061** 5 x 5" - 1 Set / Box

**C8062** 5 x 5-1/2" - 1 Set / Box



# NEW ITEMS

August 2021



## Front Bumper Bracket Kit For 1967-70 Chevy & 1967-72 GMC 2WD Truck

- Heavy duty 1/8" thick steel reproduction
- Original style bumper mounting holes
- Black EDP coating for durability
- Kit include 2 top mount brackets and 2 outer brackets
- Welded 1/2"-13 nut on top mount brackets for frame installation
- Shorter outer brackets for 1967-70 Chevrolet and 1967-72 GMC 2-wheel drive trucks
- 1/2"-13 mounting hardware also included

**110925** 1 Set / Box



## Front Bumper Bracket Kit For 1971-72 Chevy 2WD Truck

- Heavy duty 1/8" thick steel reproduction
- Original style bumper mounting holes
- Black EDP coating for durability
- Kit include 2 top mount brackets and 2 outer brackets
- Welded 1/2"-13 nut on top mount brackets for frame installation
- Longer outer brackets for 1971-72 Chevrolet 2-wheel drive trucks
- 1/2"-13 mounting hardware also included

**110927** 1 Set / Box



**110931**



**110932**

## Inner Front Bumper Bracket For 1981-87 Chevy/GMC Truck

- Heavy duty 5/32" thick steel reproduction
- Original style bumper mounting holes
- Black EDP coating for durability
- Sold individually, please specify left-hand or right-hand side

**110931** R/H - 1 Pc. / Bulk

**110932** L/H - 1 Pc. / Bulk



**110934**



**110933**

## Outer Front Bumper Bracket For 1981-87 Chevy/GMC Truck

- Heavy duty 5/32" thick steel reproduction
- Original style bumper mounting holes
- Feature 7/16"-14 welded nuts for frame installation
- Black EDP coating for durability
- Sold individually, please specify left-hand or right-hand side

**110933** R/H - 1 Pc. / Bulk

**110934** L/H - 1 Pc. / Bulk

# NEW ITEMS

September 2021



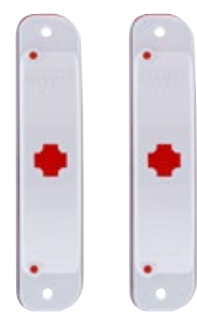
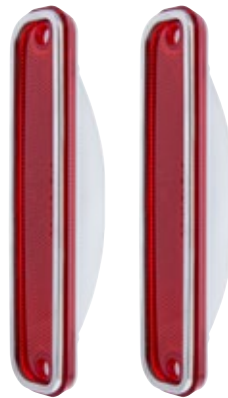
## Composite Type Headlight With Bracket For 1990-1998 Chevrolet & GMC Truck

- High quality injection molded polycarbonate lens
- Includes an excellent OE spec mounting bracket and adjustment post
- Replaceable 9005/HB4 and 9006/HB3 halogen bulbs
- Fits 1990-1998 1500 series, 1990-2000 2500 series, and 1990-2001 3500 series
- Also fits 1992-1999 Chevy Tahoe/Blazer, GMC Yukon, and Chevy/GMC Suburban

**110954** L/H - 1 Pc. / Box

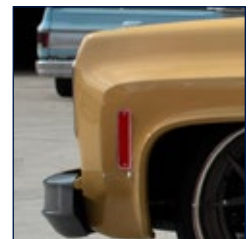
**110955** R/H - 1 Pc. / Box

Recommended Item: 9005/9006 Headlight Relay Harness (Item #34264)



## Side Marker Light With Stainless Steel Trim For 1973-80 Chevrolet Truck (Card of 2)

- High quality polycarbonate lens with original style lens pattern
- Features highly polished stainless steel deluxe style trim
- Durable plastic rear housing with OE style light socket opening (socket & bulb not included)
- Easy installation, mounts directly onto fender side marker pocket like OE
- Also fits 1973-91 Chevy & GMC Suburban, Crew Cab dually, Chevy Blazer, and GMC Jimmy
- Fits L/H or R/H side
- Available in red, amber, or clear lens



**110541** Clear Lens - 2 Pcs. / Box

**110542** Amber Lens - 2 Pcs. / Box

**110543** Red Lens - 2 Pcs. / Box

Recommended Items: Side Marker Socket (Item #C679101), Incandescent Bulbs (Item #30943) and LED Bulbs (Item #36920)





### Tail Light Assembly With Anodized Aluminum Trim For 1973-87 Chevy & GMC Truck (Pair)

- High quality injection molded polycarbonate red tail light and clear backup light lens
- Features original style lens pattern with beautiful anodized aluminum trim
- Plastic back housing with original contour and bulb socket mounting pockets
- Durable gasket included to help prevent moisture and dust intrusion
- Original installation design, easily swap out that damaged and faded tail light assembly
- Also fits 1973-89, 3/4-ton Crew Cab and 1973-91, 1-ton Crew Cab

**110544** Pair / Box



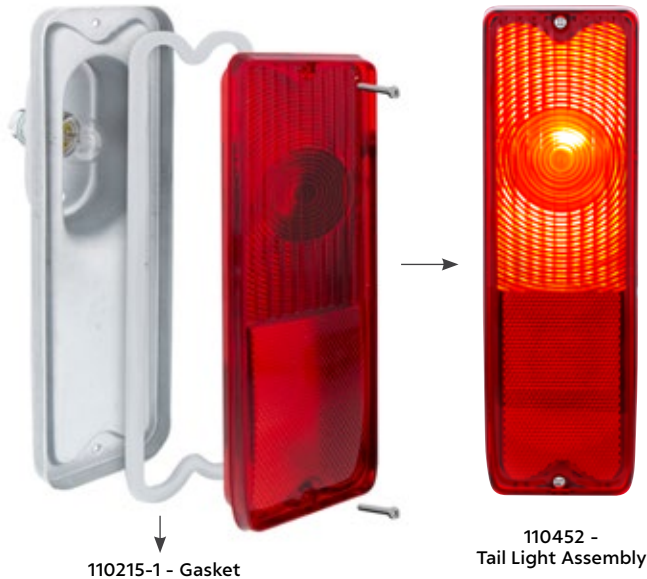
### Chrome Vintag LED Flashlight With Roller-Action Holder

- Features bright white LED, glass lens, morse code button, and hanging loop
- Holder has classic hammertone finish with roller-action grip
- Holder fits 1-7/8" diameter steering columns
- Uses 2 "D" cell batteries (not included)

**110918** 1 Pc. / Box

# NEW ITEMS

October 2021



110215-1 - Gasket

110452 - Tail Light Assembly



## Tail Light Assembly For 1967-72 Chevy & GMC Fleetside Truck

- Fully assembled with steel reproduction housing and polycarbonate lens
- Galvanized stamped steel housing eliminates rust and corrosion
- Great looking original style replacement lens (no GM markings)
- Pre-assembled with clear 1157 bulb and white foam rubber gasket
- Fits left-hand or right-hand side. Sold each
- Socket wiring pigtail sold separately, part #C606615

**110452** 1 Pc. / Box

## Tail Light Lens Gasket For 1967-72 Chevy & GMC Truck

- Fits between tail light housing and lens
- White foam rubber as original
- Die cut to the exact shape and size as original to provide a nice tight seal

**110215-1** 1 Pc. / Each



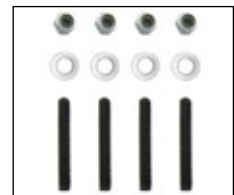
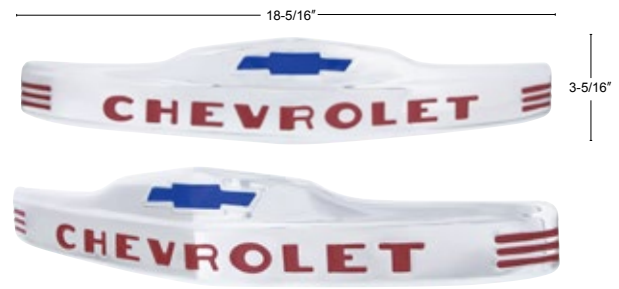
110699 - Red Lens Only

110126 - LED Insert  
Sold Separately

## Tail Light Lens For 1967-72 Chevy & GMC Panel Truck & Suburban

- Great looking replacement lens with original reflective designs
- Injection molded from high quality red polycarbonate plastic
- Fits both left and right hand side

**110699** 1 Pc. / Card



## Stainless Steel "CHEVROLET" Hood Emblem For 1947-53 Chevrolet Truck

- Highly polished stainless steel
- Die stamped with original style bow-tie and lettering
- Official GM licensed restoration product

**110889** 1 Pc. / Each



110937

### Door Window Beltline Felt For 1967-72 Chevy & GMC Truck

- High quality rubber and plastic reproduction of the original with steel core and black felt
- Feature OE type metal retaining clips
- Perfect for replacing the old wore out door window beltline weatherstrip

**110937** L/H - Inner Door 1 Pc. / Each

**110938** R/H - Inner Door 1 Pc. / Each

**110939** L/H - Outer door 1 Pc. / Each

**110940** R/H - Outer door 1 Pc. / Each



110940



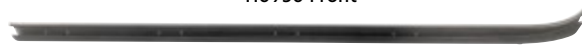
110944 Front



110944 Back



110950 Front



110950 Back



110946 Front



110946 Back



### Door Window Beltline Felt For 1973-87 Chevy & GMC Truck

- High quality plastic reproduction of the original with steel core and black felt
- Feature OE type metal retaining clips
- Perfect for replacing the old wore out door window beltline weatherstrip

**110944** L/H - 1973-80 Inner Door 1 Pc. / Each

**110945** R/H - 1973-80 Inner Door 1 Pc. / Each

**110950** L/H - 1981-87 Inner Door 1 Pc. / Each

**110951** R/H - 1981-87 Inner Door 1 Pc. / Each

**110946** L/H - 1973-87 Outer door 1 Pc. / Each

**110947** R/H - 1973-87 Outer door 1 Pc. / Each



### 48" X 36" UPcarparts Banner

- Banner for United Pacific classic parts and accessories
- Dimensions approximately = 48" wide X 36" length

**99217** 1 Pc. / Each



# NEW ITEMS

November 2021



**4**  
LEDs



## 4 White LED License Plate Light With 304 Stainless Steel Bracket For 1966-77 Ford Bronco

- Highly polished 16 gauge stainless steel bracket
- Pre-assembled with 4 white LEDs 1-1/2" round license plate light
- Original style retaining tabs and mounting screw hole position
- Fits over existing license plate light mounting hole
- Simple wiring with 2 wire leads

**110922** 1 Pc. / Card



## Tail Light For Ford Bronco (1980-88) & Truck (1980-86)

- Quality plastic lens with original reflective features and detail
- Special protective coating on lens to prevent UV caused fading and hazing
- Durable rear housing with OE light socket type openings
- DOT/SAE, FMVSS 108

**111016** L/H - 1 Pc. / Box

**111017** R/H - 1 Pc. / Box



## Hood Hinge With Spring For 1981-1987 Chevy & GMC Truck

- Heavy duty steel reproduction of the original hood hinge with pre-installed clock spring and machine riveted mounting plates
- Precision punched mounting holes for easy and straight forward installation
- Feature original style strengthening ribs design
- Finished with black EDP protective coating to keep your new steel fresh and rust-free
- Also fits 1981-1991 Chevy Blazer and GMC Jimmy, 1987-1991 Chevy & GMC Suburban

**110993** L/H 1 Pc. / Each

**110994** R/H 1 Pc. / Each

# NEW ITEMS

December 2021



## Chrome 5 on 5-1/2" Vintage Spider Wheel Hub Cover (4/Set)

- Beautiful high quality chrome plated finish with triple chrome plating process
- 5 on 5-1/2" bolt pattern
- Best on the market, made of die-cast metal, not plastic
- Comes complete with mounting hardware
- These fit on most wheels to give your vehicle a cool look
- Set of four

**C8062** 4 Pcs. / Set



## SEMA 2021 United Pacific K5 Blazer T-Shirt

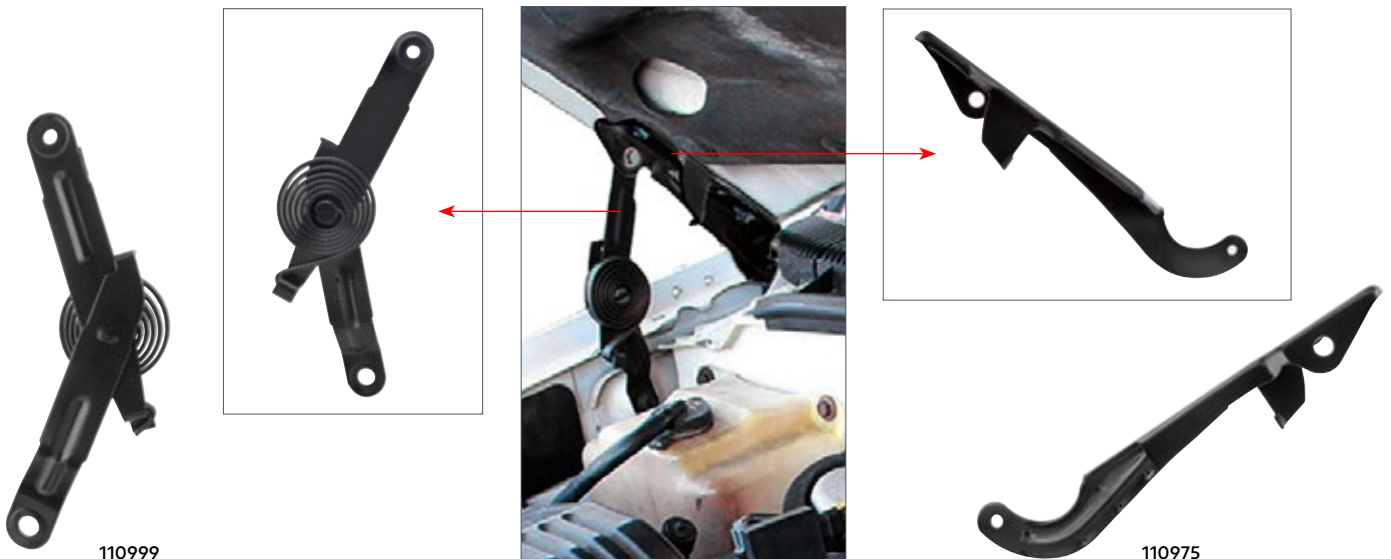
- Smoke gray tee featuring John Oro's K5 Blazer illustration on the back
- 100% cotton
- Printed in the USA

**99305M** M 1 Pc. / Each

**99305L** L 1 Pc. / Each

**99305XL** XL 1 Pc. / Each

**99305XXL** XXL 1 Pc. / Each



## Hood Hinge Spring and Hood Hinge Bracket for 1988-1999 Chevy & GMC Truck

- Heavy duty steel reproduction with original style strengthening ribs
- Precision punched mounting holes for easy and straight forward installation
- Finished with black EDP protective coating to keep your new steel fresh and rust-free
- Also fits 1992-1994 Chevy Blazer and GMC Jimmy, 1992-1999 Chevy & GMC Suburban, and 1992-2000 GMC Yukon

**110998** Hood Hinge Spring Assembly - L/H 1 Pc. / Each

**110999** Hood Hinge Spring Assembly - R/H 1 Pc. / Each

**110974** Hood Hinge Bracket - L/H 1 Pc. / Each

**110975** Hood Hinge Bracket - R/H 1 Pc. / Each

# PRODUCT INDEX

ITEM#	PAGE#	ITEM#	PAGE#
33009	8	110934	14
33010	8	110935	5
33011	8	110936	5
33012	8	110937	18
33013	8	110938	18
33014	8	110939	18
99084	12	110940	18
99217	18	110944	18
110308	13	110945	18
110309	13	110946	18
110452	17	110947	18
110541	15	110950	18
110542	15	110951	18
110543	15	110952	10
110544	16	110953	10
110595	7	110954	15
110699	17	110955	15
110759	5	110974	20
110760	5	110975	20
110761	5	110993	19
110762	5	110994	19
110763	5	110998	20
110764	5	110999	20
110889	17	111016	19
110896	11	111017	19
110897	11	10351CB	12
110898	11	10749CB	12
110903	13	110215-1	17
110904	3	99305L	20
110912	6	99305M	20
110913	6	99305XL	20
110914	6	99305XXL	20
110915	6	ACLE6	12
110916	9	ANF1220	12
110917	7	C4052	9
110918	16	C5012G	7
110919	11	C8056	13
110920	11	C8057	13
110922	19	C8061	13
110925	14	C8062	13
110926	10	C8062	20
110927	14	CML6872A	7
110928	9	CML6872R	7
110931	14	CTL4010LED-AS	9
110932	14	M1003	5
110933	14		





United Pacific



UPauto.com | T 866.327.5288 | F 888.986.6088

© 2022 United Pacific Industries. All Rights Reserved. Products not shown to scale. Specifications subject to change without notice.

**ANF1221**

2021 Classic New Item Flyer Collection



710270063550