



United Pacific

1947-1987

CHEVY & GMC TRUCKS

SPECIAL EDITION
NEW PRODUCTS SINCE 2020



TABLE OF CONTENTS

CHEVY & GMC TRUCKS

<u>Product Index</u>	<u>2</u>
<u>Tail Lights & Parking Lights</u>	<u>3-4</u>
<u>Cargo Lights</u>	<u>4</u>
<u>Sidemarkers & Mirrors</u>	<u>5</u>
<u>Handles & Beltline Felts</u>	<u>6</u>
<u>Accessories & Door Hinges</u>	<u>7-8</u>
<u>Hood Hinges & Springs</u>	<u>9</u>
<u>Bumper & Bumper Kits</u>	<u>10</u>
<u>Body Panels</u>	<u>11</u>

WARRANTY AND TERMS

<u>Terms & Conditions / Ordering / Freight</u>	<u>13</u>
<u>Shipping / Policy / Claims</u>	<u>13</u>
<u>Warranty Policy / Returns</u>	<u>13</u>
<u>Returns</u>	<u>13</u>
<u>Disclaimer / Warranty Claim Form</u>	<u>13</u>

FORD BRONCO

<u>Door Handles</u>	<u>14</u>
<u>Hinges</u>	<u>15</u>
<u>Mirrors</u>	<u>15</u>
<u>Panels, Brackets, Accessories</u>	<u>16</u>
<u>LED Lights</u>	<u>17</u>
<u>Product Index</u>	<u>18</u>

CHEVY & GMC TRUCK
PRODUCT INDEX

<u>ITEM #</u>	<u>PAGE #</u>	<u>ITEM #</u>	<u>PAGE #</u>	<u>ITEM #</u>	<u>PAGE #</u>
110126	4	110879	9	110954	3
110147	4	110885	3	110955	3
110148	4	110886	3	110963	8
110149	5	110887	8	110964	3
110308	8	110888	8	110965	3
110309	8	110889	8	110974	9
110452	4	110896	11	110975	9
110544	4	110897	9	110976	6
110545	3	110898	9	110977	6
110546	3	110899	9	110978	6
110694	8	110900	4	110979	6
110697	8	110912	11	110980	6
110699	4	110913	11	110981	6
110712	5	110914	11	110986	5
110713	5	110915	11	110987	5
110714	5	110919	11	110988	5
110715	5	110920	11	110989	5
110833	7	110923	9	110993	9
110834	7	110924	9	110994	9
110835	7	110925	10	110995	9
110836	7	110926	10	110996	9
110841	7	110928	10	110998	9
110843	3	110929	10	110999	9
110844	3	110930	10	111002	3
110849	10	110931	11	111004	11
110850	10	110932	11	111005	11
110852	10	110933	10	111018	7
110853	10	110934	10	10349B	7
110856	7	110937	6	10351B	7
110857	7	110938	6	10351CB	7
110859	8	110939	6	C4009G	4
110860	7	110940	6	C4037	8
110865	11	110944	6	C626702	5
110866	11	110945	6	C647201	5
110867	11	110946	6	C667101	5
110874	6	110947	6	C7016	11
110875	6	110950	6	C738710-CVX	5
110876	4	110951	6	CPL4753A-AC	3
110877	9	110952	3	CPL4753C-AC	3
110878	9	110953	3		



17 Amber LED Front Parking Light - Amber Lens

1973-1980 Chevy & GMC Truck

- Injection molded polycarbonate lens.
- Fully epoxy sealed electronics.
- Beautiful stainless steel trim.
- Parking light & bright turn signal.
- 1157 plug, no modification to vehicle.
- DOT/SAE, FMVSS 108.

Item	Description	Pack
110885	Left Hand	1 Pc./Card
110886	Right Hand	1 Pc./Card

17 Amber LED Front Parking Light - Clear Lens

1973-1980 Chevy & GMC Truck

- Injection molded polycarbonate lens.
- Fully epoxy sealed electronics.
- Beautiful stainless steel trim.
- Parking light & bright turn signal.
- 1157 plug, no modification to vehicle.
- DOT/SAE, FMVSS 108.

Item	Description	Pack
110964	Left Hand	1 Pc./Card
110965	Right Hand	1 Pc./Card

24 LED Parking Light Assembly W/ Chrome Bezel

1947-1953 Chevy Truck

- Injection molded polycarbonate lens.
- Chrome plated steel bezel.
- Black metal housing mounting studs.
- Parking light & bright turn signal.
- Fully epoxy sealed electronics.

Item	Description	Pack
CPL4753A-AC	Parking LT	1 Pc./Each



24 LED Parking Light Assembly W/ Chrome Bezel

1947-1953 Chevy Truck

- Injection molded polycarbonate lens.
- Chrome plated steel bezel.
- Black metal housing mounting studs.
- Parking light & bright turn signal.
- Fully epoxy sealed electronics.

Item	Description	Pack
CPL4753C-AC	Parking LT	1 Pc./Each

Composite Type Headlight W/ Bracket

1990-1998 Chevrolet & GMC Truck

- Injection molded polycarbonate lens.
- Includes OE spec mounting bracket & adjustment post.
- Replaceable halogen bulbs.

Item	Description	Pack
110954	Left Hand	1 Pc./Wbox
110955	Right Hand	1 Pc./Wbox

Parking Light

1988-1989 Chevrolet & GMC Truck

- Quality original style reproduction.
- Injection molded rear housing.
- Replacement for models w/ 4 sealed beam headlight system.
- Also fits 1990-93 Chevy and GMC truck, additional hardware required.

Item	Description	Pack
110952	Left Hand	1 Pc./Each
110953	Right Hand	1 Pc./Each



Black EDP Parking Light Housing W/ Gasket

1973-1980 Chevy & GMC Truck

- 17 gauge stamped steel.
- Features original spec #8-32 welded nuts for parking light lens.
- Black EDP protective coated.
- Black foam gasket included.
- Parking light plug receptacle not included.

Item	Description	Pack
111002	Black PL Housing	1 Pc./Each

LED Sequential Tail Light W/ Trim

1973-1987 Chevy & GMC Truck

- 56 red LED TL & 12 LED white back-up light.
- Includes brake attention & selector switch & mounting base plate.
- Electronics sealed in epoxy.
- Requires use of turn signal flasher, #90652 or #90649.

Item	Description	Pack
110843	Left Hand	1 Pc./Card
110844	Right Hand	1 Pc./Card

Red LED Tail Light (Pair)

1988-1998 Chevy & GMC Truck

- Feature 16 bright red LEDs.
- Durable polycarbonate housing.
- Plug-in design w/ OE style connector.
- OE style rear housing mounting tabs.
- Compatible w/ standard 12V DC system & 3157 type bulb (not included)

Item	Description	Pack
110545	Clear Lens	2 Pc./Wbox
110546	Smoke Lens	2 Pc./Wbox



Tail Light Assembly

- 1967-1972 Chevy & GMC Fleetside Truck*
- Fully assembled w/ steel reproduction housing, polycarbonate lens, 1157 bulb, & foam rubber gasket.
 - Galvanized stamped steel housing.
 - Original style replacement lens (no GM markings).
 - Fits left-hand or right-hand side.
 - #C606615 sold separately.

Item	Description	Pack
110452	TL Assembly	1 Pc./Wbox



Tail Light Assembly W/ Anodized Aluminum Trim

- 1973-1987 Chevy & GMC Truck (Pair)*
- Injection molded polycarbonate red tail light and clear backup light lens.
 - Features original style lens pattern.
 - Original contour & bulb socket mounting pockets.
 - Durable gasket included.

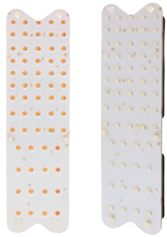
Item	Description	Pack
110544	TL Assembly	1 Pc./Wbox



Tail Light Lens

- 1967-1972 Chevy & GMC Panel Truck & Suburban*
- Replacement lens w/ OE reflective designs.
 - Injection molded from high quality red polycarbonate plastic.
 - Fits both left and right hand side.

Item	Description	Pack
110699	Tail Light Lens	1 Pc./Card



61 Red LED Retrofit TL Insert

- 1967-1972 Chevrolet & GMC Suburban/Fleetside*
- Bright LED circuit board installs behind existing lens.
 - Dual function w/ stop/turn signal.
 - Electrical connection w/ 1157 plug.
 - Fits original housing w/ foam padding & tabs to secure lens in place.

Item	Description	Pack
110126	61 Red LED TL	1 Pc./Card



Tail Light Lens Gasket

- Chevrolet Car (1937-1938) & Chevrolet/GMC Truck (1940-1953)*
- Fits between tail light housing & lens.
 - Made of quality cork-neoprene material as original.
 - Die cut to the exact shape and size as original.

Item	Description	Pack
C4009G	TL Lens Gasket	1 Pc./Each



LED Cargo Light Assembly

- 1969-1972 Chevy & GMC Truck*
- Triple chrome plated process finish.
 - Bright LED cargo light assembly w/ integrated LED 3rd brake light.
 - Exceptional quality die-cast.
 - Includes large rubber mounting pad, socket, lens gasket, lens screws & housing to cab mounting spacers.

Item	Description	Pack
110147	LED Cargo Light	1 Pc./Cbox



Chrome Interior Dome Light Assembly

- 1960-1972 Chevrolet GMC Truck/Suburban*
- Chrome plastic housing with lens, 12V light bulb, 143" OE style wiring harness and plug connector.

Item	Description	Pack
110876	Dome Light	1 Pc./Wbox



21 LED Cargo Light & Brake Light

- 1973-1987 Chevy & GMC Truck*
- 14 white LED cargo light w/ integrated 7 red LED 3rd brake light feature.
 - 1004 double contact plug as original.
 - Wiring instructions included.
 - Fully epoxy sealed electronics.
 - Solid-state circuit board engineered for 12V DC systems.

Item	Description	Pack
110900	Cargo Brake Light	1 Pc./Card



Cargo Light Housing

- 1969-1972 Chevy & GMC Truck*
- Triple chrome plated process finish.
 - Exceptional quality die-cast.
 - Includes socket, lens gasket, lens screws and housing to cab mounting spacers.

Item	Description	Pack
110148	Cargo LT Housing	1 Pc./Cbox



Cargo Light Mounting Pad

1969-1972 Chevy & GMC Truck

- Made of high quality black rubber.

Item	Description	Pack
110149	Cargo Light Mounting Pad	1 Pc./Each

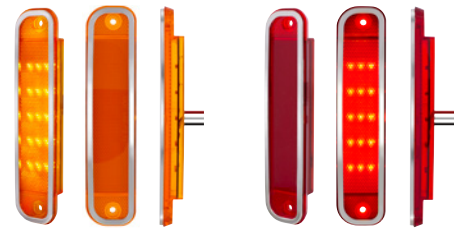


15 LED Side Marker

1973-1980 Chevrolet & GMC Truck

- Super bright LED w/ high quality injection molded acrylic lens.
- Parking light and turn signal.
- Polished SS deluxe style trim.
- Epoxy coated & sealed electronics.
- Fits L/H or R/H side.

Item	Description	Pack
110714	Amber LED/ Clear Lens	1 Pc./Card
110715	Red LED/ Clear Lens	1 Pc./Card



15 LED Side Marker

1973-1980 Chevrolet & GMC Truck

- Super bright LED w/ high quality injection molded acrylic lens.
- Parking light and turn signal.
- Polished SS deluxe style trim.
- Epoxy coated & sealed electronics.
- Fits L/H or R/H side.

Item	Description	Pack
110712	Amber LED/ Amber Lens	1 Pc./Card
110713	Red LED/ Red Lens	1 Pc./Card



Convex Exterior Mirror Kit

1973-1987 Chevy & GMC Truck

- Die-cast & chrome plated D49 style mirror arm & housing.
- Includes mounting pad, mounting bracket & screws.
- Convex mirror for wide angle visibility.

Item	Description	Pack
C738710-CVX	Convex	1 Pc./Cbox



Black Door Mirror (Power, Foldable)

1988-2000 Chevy & GMC Truck

- OE reproduction w/ plastic housing.
- Power 4-way adjustable mirror glass w/ OE style connector plug.
- Overmolded mounting studs w/ nuts in OE positions.
- Black rubber base pad included.

Item	Description	Pack
110988	Left Hand	1 Pc./Box
110989	Right Hand	1 Pc./Box



Black Door Mirror (Manual, Foldable)

1988-2000 Chevy & GMC Truck

- OE reproduction w/ plastic housing.
- Overmolded mounting studs w/ nuts in OE positions.
- Black rubber base pad included.
- Items #110986 - 110989 also fit 1992-99 Suburban, 1995-2000 Tahoe, 1992-1994 Blazer, 1992-2000 Yukon.

Item	Description	Pack
110986	Left Hand	1 Pc./Box
110987	Right Hand	1 Pc./Box



8" Day/Nite Mirror

1962-1967 Chevrolet Camaro/Chevelle/Impala/Nova

- Fits Camaro, Chevelle, Impala, Nova and other GM vehicles.
- Polished stainless steel mirror housing.
- Day/night flip lever as original.

Item	Description	Pack
C626702	8" Mirror	1 Pc./Box



10" Day/Nite Mirror

1962-1967 Chevrolet Camaro/Chevelle/Impala/Nova

- Fits Camaro, Chevelle, Impala, Nova & other GM vehicles.
- Polished stainless steel mirror housing.
- Day/night flip lever as original.

Item	Description	Pack
C647201	10" Mirror	1 Pc./Each



12" Day/Nite Mirror

1962-1967 Chevrolet Camaro/Chevelle/Impala/Nova

- Polished stainless steel mirror housing.
- Features day/night flip lever as original.

Item	Description	Pack
C667101	12" Mirror	1 Pc./Box

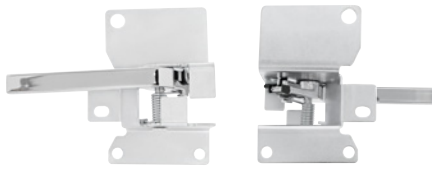


Interior Door Handle

1977-1980 Chevy & GMC Truck

- OE style reproduction plastic handle w/ steel mounting bracket.
- Precision punched mounting holes.
- Durable aluminum handle cover w/ brushed look.
- OE style latch rod attachment design.

Item	Description	Pack
110976	Left Hand	1 Pc./Box
110977	Right Hand	1 Pc./Box



Inside Door Handle

1981-1986 Chevy & GMC Truck

- Triple chrome plating process finish.
- Zinc die cast handle & OE style mounting bracket w/ coil spring.
- Also fits 1981-91 Chevy/GMC Suburban, 1981-86 K5 Blazer, 1987-91 Blazer, and 1981-91 Jimmy.

Item	Description	Pack
110978	Left Hand	1 Pc./Box
110979	Right Hand	1 Pc./Box



Window Crank Handle

1981-1986 Chevy & GMC Truck

- Quality zinc casting handle.
- Original style knob.
- Easy installation w/ OE spec spline & retainer clip.
- Also fits 1982-94 Suburban/S10/S15, & 1983-97 Blazer/Jimmy.

Item	Description	Pack
110980	Chrome	1 Pc./Box
110981	Black Plastic	1 Pc./Box

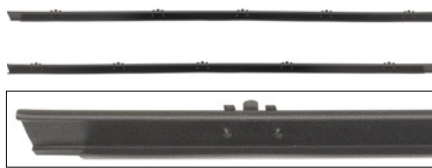


Inner Door Window Beltline Felt

1973-1980 Chevy & GMC Truck

- Quality plastic reproduction of the original w/ steel core & black felt.
- OE type metal retaining clips.
- Perfect for replacing the worn out inner door window beltline weatherstrip.

Item	Description	Pack
110944	Left Hand	1 Pc./Each
110945	Right Hand	1 Pc./Each



Outer Door Window Beltline Felt

1967-1972 Chevy & GMC Truck

- Quality plastic reproduction of the original w/ steel core & black felt.
- OE type metal retaining clips.
- Perfect for replacing the worn out outer door window beltline weatherstrip.

Item	Description	Pack
110939	Left Hand	1 Pc./Each
110940	Right Hand	1 Pc./Each



Inner Door Window Beltline Felt

1967-1972 Chevy & GMC Truck

- High quality rubber and plastic reproduction of the original w/ steel core & black felt.
- OE type metal retaining clips.
- Perfect for replacing the worn out inner door window beltline weatherstrip.

Item	Description	Pack
110937	Left Hand	1 Pc./Each
110938	Right Hand	1 Pc./Each



Inner Door Window Beltline Felt

1981-1987 Chevy & GMC Truck

- High quality rubber and plastic reproduction of the original w/ steel core & black felt.
- OE type metal retaining clips.
- Perfect for replacing the old worn out inner door window beltline weatherstrip.

Item	Description	Pack
110950	Left Hand	1 Pc./Each
110951	Right Hand	1 Pc./Each



Outer Door Window Beltline Felt

1973-1987 Chevy & GMC Truck

- Quality plastic reproduction of the original w/ steel core & black felt.
- OE type metal retaining clips.
- Perfect for replacing the worn out outer door window beltline weatherstrip.

Item	Description	Pack
110946	Left Hand	1 Pc./Each
110947	Right Hand	1 Pc./Each



Titan Locking Gas Cap

- Top quality rugged all metal military style fuel cap design.
- Fits 1947-71 Chevy & GMC trucks, 1949-70 Ford cars, 1957-70 Ford trucks & Bronco.
- Vented gas cap for vented fuel systems only.

Item	Description	Pack
110874	Chrome Gas Cap	1 Pc./Card
110875	Black Gas Cap	1 Pc./Card



Chrome Spike Hubcap Nut Cover

Various 1999-2018 Chevy & GMC Full Size Truck

- Sized to fit the twist-on simulated lug nut on OE steel wheel hubcap.
- Molded plastic w/ chrome plating.
- Fits GM lug nut #9597158, M27-2.0, Hex 22mm.

Item	Description	Pack
10351B	Spike Nut Cover	1 Pc./Each



Matte Black Spike Hubcap Nut Cover

2003-2015 Chevy & GMC Full Size Truck

- Sized to fit the twist-on simulated lug nut on OE steel wheel hubcap.
- Quality molded plastic w/ long lasting black finish.
- Hubcap not included.

Item	Description	Pack
10349B	Spike Nut Cover	1 Pc./Each



Chrome Spike Hubcap Nut Cover

Various 1999-2018 Chevy & GMC 2500 & 3500

- Sized to fit the twist-on simulated lug nut on OE steel wheel hubcap.
- Molded plastic w/ chrome plating.
- Fits GM lug nut #9597158, M27-2.0, Hex 22mm.

Item	Description	Pack
10351CB	Spike Nut Cover	32 Pc./Cbox



Lower Door Hinge

1967-1972 Chevy & GMC Truck

- High quality door hinge assembly w/ bronze bushing & high strength hinge pin.
- Made to OE specifications for adjustability & door alignment

Item	Description	Pack
110835	Left Hand	1 Pc./Each
110836	Right Hand	1 Pc./Each

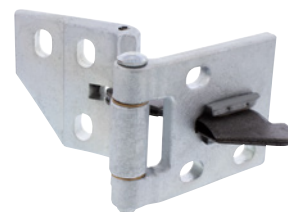


Lower Door Hinge

1973-1987 Chevrolet & GMC Truck

- Die stamped with heavy duty steel w/ original contour detail.
- Precision punched mounting holes for easy installation.

Item	Description	Pack
110856	Left Hand	1 Pc./Each
110857	Right Hand	1 Pc./Each



Upper Door Hinge

1967-1972 Chevy & GMC Truck

- Door hinge assembly w/ bronze bushing & high strength hinge pin.
- Made to OE specifications for adjustability and door alignment.
- Includes door stop and tension brake to hold door in open position.

Item	Description	Pack
110833	Left Hand	1 Pc./Each
110834	Right Hand	1 Pc./Each



Cab Mount Kit

1960-1966 Chevrolet & GMC 1/2 Ton Truck

- Quality molded rubber cab mounts.
- Includes all mounting bolts, lock nuts, spacers and large washers.
- 28 piece kit.
- Includes installation diagram.

Item	Description	Pack
110860	Cab Mount Kit	1 Pc./Wbox



Cab Mount Kit

1949-1954 Chevrolet & GMC Truck

- Complete, 18 piece cab mounting kit.
- Features heavy duty reinforced rubber square pad & mounting fasteners for front cab installation.
- Quality molded rubber bushing for the rear cab mount shackles.
- Includes installation diagram.

Item	Description	Pack
110841	Cab Mount Kit	1 Pc./Wbox



Black Dash Pad

1967-1972 Chevy & GMC Truck

- Reproduction in black polyurethane w/ OE style texture.
- Foam insert & steel strip for mounting hole support.
- Mounting screws, speed nuts, & speed clips included.

Item	Description	Pack
111018	Dash Pad	1 Pc./Wbox



Gearshift Threaded Collar

1947-1954 Chevy Car & Truck

- Die-cast w/ coating for long lasting use.

Item	Description	Pack
C4037	GS Threaded Collar	1 Pc./Each



Door Lock Cylinder With Keys

1947-1951 Chevy/GMC Truck

- OE style spring-loaded key hole cover & 2 keys w/ GM marking.
- Official GM licensed restoration product.

Item	Description	Pack
110887	Door Lock	1 Pc./Each



Glove Box Lock Cylinder With Keys

1947-1953 Chevy/GMC Truck

- Quality reproduction of original style lock cylinder.
- Includes 2 keys with GM marking.
- Official GM licensed restoration product.

Item	Description	Pack
110888	Glove Box Lock	1 Pc./Each

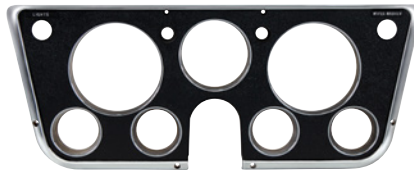


Glove Box Liner

1973-1991 Chevy & GMC Truck

- Quality molded ABS plastic reproduction w/original contour & mounting hole patterns.
- Features original contour, mounting hole patterns, & lock cylinder pass-through.

Item	Description	Pack
110308	With A/C	1 Pc./Each
110309	Without A/C	1 Pc./Each

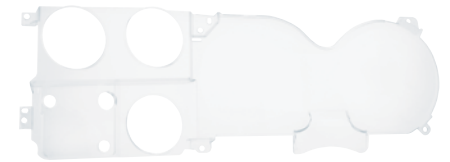


Dash Bezel W/ 7 Gauges

1969-1972 Chevy/GMC Truck

- High quality plastic injection molded reproduction of the original.
- Beautiful chrome plated outer trim w/ black painted inner face.
- OEM mounting pattern & posts.

Item	Description	Pack
110697	Black & Chrome	1 Pc./Wbox



Clear Acrylic Instrument Cluster Lens

1973-1987 Chevy & GMC Truck

- Quality crystal clear acrylic lens.
- Perfect for replacing that old cracked gauge cluster lens.
- Easy to install with original style design and mounting tabs.

Item	Description	Pack
110963	Guages w/o Clock	1 Pc./Each



ACC-OFF-ON-START Ignition Plate

1967-1972 Chevy & GMC Truck

- Quality plastic injection molded w/ durable black ABS plastic.
- Raised lettering w/ chrome finish.
- Mount exactly like original for easy installation.

Item	Description	Pack
110694	Ignition Plate	1 Pc./Each



Stainless Steel Hood Emblem

1947-1953 Chevrolet Truck

- Die stamped w/ OE style bow-tie & lettering.
- Official GM licensed restoration product.
- Measure approx. 18-5/16" wide, 3-5/16" tall.
- Hardware included.

Item	Description	Pack
110889	SS Hood Emblem	1 Pc./Box



Red Bowtie Grille Emblem

1967-1968 Chevrolet Truck

- Die-cast reproduction of the original.
- Quality chrome plated outer housing w/ black front outline.
- Mounting hardware included.
- GM licensed restoration product.

Item	Description	Pack
110859	Grille Emblem	1 Pc./Wbox

CHEVY & GMC TRUCKS



Hood Pivot Hinge

1981-1987 Chevy & GMC Truck

- Heavy duty steel reproduction w/ machine riveted base bracket.
- Precision punched mounting holes..
- OE style strengthening ribs design.
- Black EDP protective coated.
- Also fits 1981-1991 Chevy Blazer and GMC Jimmy, 1987-1991 Chevy & GMC Suburban.

Item	Description	Pack
110995	Left Hand	1 Pc./Each
110996	Right Hand	1 Pc./Each

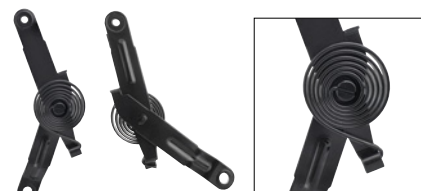


Hood Hinge With Spring

1981-1987 Chevy & GMC Truck

- Heavy duty steel reproduction w/ pre-installed clock spring & machine riveted mounting plates.
- Precision punched mounting holes.
- OE strengthening ribs design.
- Black EDP protective coated.

Item	Description	Pack
110993	Left Hand	1 Pc./Each
110994	Right Hand	1 Pc./Each



Hood Hinge Spring Assembly

1988-1999 Chevy & GMC Truck

- Heavy duty steel reproduction w/ pre-installed clock spring.
- Precision punched mounting holes.
- OE style strengthening ribs design.
- Black EDP protective coated.
- Also fits 1992-1994 Chevy Blazer & GMC Jimmy, 1992-99 Chevy & GMC Suburban, and 1992-2000 Yukon.

Item	Description	Pack
110998	Left Hand	1 Pc./Each
110999	Right Hand	1 Pc./Each



Stainless Steel Hood Springs

1967-1972 Chevrolet & GMC Truck

- Specially engineered to have the same yield and tensile strength as original.
- Corrosion resistant stainless steel, w/ a bright electropolished satin finish.
- Sold in pairs.

Item	Description	Pack
110899	SS Hood Springs	Pair



Black Hood Hinge Springs

1967-1972 Chevrolet & GMC Truck

- Specially engineered to have the same yield and tensile strength as the original.
- Black EDP protective coated.
- Sold in pairs.

Item	Description	Pack
110879	Bl. Hood Springs	Pair



Chrome Hood Hingel

1967-1972 Chevrolet & GMC Truck

- High quality chrome plated finish w/ triple chrome plating process.
- Heavy duty steel reproduction of the original hood hinge style & design.
- Stainless steel springs available separately, UP#110899.

Item	Description	Pack
110897	Left Hand	1 Pc./Each
110898	Right Hand	1 Pc./Each



Hood Hinge

1967-1972 Chevrolet & GMC Truck

- Heavy duty steel reproduction of the original hood hinge style & design.
- Finish w/ black EDP protective coating to keep fresh & rust-free.
- Springs available separately, UP#110879.

Item	Description	Pack
110877	Left Hand	1 Pc./Each
110878	Right Hand	1 Pc./Each



Fuel Tank Mounting Bracket W/ Strap

1967-1972 Chevy & GMC Truck

- Heavy duty 11 gauge steel w/ original strengthening contour.
- 16 gauge steel strap w/ OE spec threaded rod.
- Direct bolt-on installation w/ welded OE size nuts.

Item	Description	Pack
110923	Front	1 Pc./Each
110924	Rear	1 Pc./Each

Hood Hinge Bracket

1988-1999 Chevy & GMC Truck

- Heavy duty steel reproduction.
- Precision punched mounting holes.
- Black EDP protective coating.
- Also fits 1992-1994 Chevy Blazer, GMC Jimmy, 1992-1999 Chevy & GMC Suburban, & 1992-2000 GMC Yukon.

Item	Description	Pack
110974	Left Hand	1 Pc./Each
110975	Right Hand	1 Pc./Each



Chrome Bumper With Impact Strip Holes

1983-1991 Chevrolet & GMC Truck/SUV

- Heavy 14 gauge stamped steel with quality chrome plating finish.
- Precision punched square carriage bolt holes.
- Features recessed license plate pocket with mounting holes.

Item	Description	Pack
110852	Front	1 Pc./Each



Chrome Bumper Without Impact Strip Holes

1981-1991 Chevrolet & GMC Truck/SUV

- Heavy 14 gauge stamped steel with quality chrome plating finish.
- Precision punched square carriage bolt holes.
- Features recessed license plate pocket with mounting holes.

Item	Description	Pack
110853	Rear	1 Pc./Each



Chrome Bumper Without Impact Strip Holes

1973-1980 Chevy & GMC Truck

- Heavy 14 gauge stamped steel with quality chrome plating finish.
- Precision punched square carriage bolt holes.
- Features recessed license plate pocket with mounting holes.

Item	Description	Pack
110849	Front	1 Pc./Each
110850	Rear	1 Pc./Each



Front Bumper Bracket Kit

Chevrolet 2WD Truck (1967-1970) & GMC 2WD Truck (1967-1972)

- 1/8" thick steel reproduction w/ OE style mounting holes & EDP coating.
- Welded 1/2"-13 nut on top mount brackets for frame installation.
- Shorter outer brackets for 1967-70 Chevrolet & 1967-72 GMC 2-wheel drive trucks.
- 1/2"-13 mount hardware included.

Item	Description	Pack
110925	Front Kit	1 Pc./Wbox



Front Bumper Bracket Kit

1973-1980 Chevy/GMC Truck

- 8 gauge steel reproduction / OE style strengthening contour.
- Black EDP coating for durability.
- Precision punched mounting holes.
- Mounting hardware (1/2"-13 fasteners) included.

Item	Description	Pack
110929	Front Bumper Bracket Kit	1 Pc./Box



Rear Bumper Bracket Kit

1973-1980 Chevy/GMC Fleetside Truck

- Heavy gauge steel reproduction w/ OE style strengthening contour.
- Black EDP coating for durability.
- Precision punched mounting holes.
- Six 1/2"-13 x 2" long hex bolts w/ nuts, split lock washers, and flat washers included.

Item	Description	Pack
110928	Rear Kit	1 Pc./Wbox



Outer Front Bumper Bracket

1981-1987 Chevy/GMC Truck

- 5/32" thick steel reproduction.
- OE style bumper mounting holes.
- Features 7/16"-14 welded nuts for frame installation.
- Black EDP coating for durability.

Item	Description	Pack
110934	Left Hand	1 Pc./Box
110933	Right Hand	1 Pc./Box



Rear Bumper Bracket Kit

1967-1972 Chevy/GMC Fleetside Truck

- 9 gauge steel reproduction.
- Precision punched mounting holes.
- Black EDP coating for durability.
- Mounting hardware included.

Item	Description	Pack
110926	Rear Bumper Bracket Kit	1 Pc./Wbox



Rear Bumper Bracket Kit

1981-1987 Chevy/GMC Fleetside Truck

- 9 gauge steel reproduction.
- Precision punched mounting holes.
- Black EDP coating for durability.
- Mounting hardware included.

Item	Description	Pack
110930	Rear Bumper Bracket Kit	1 Pc./Wbox



Inner Front Bumper Bracket

1981-1987 Chevy/GMC Truck

- 5/32" thick steel reproduction.
- OE style bumper mounting holes.
- Black EDP coating for durability.

Item	Description	Pack
110932	Left Hand	1 Pc./Box
110931	Right Hand	1 Pc./Box



Rear Inner Wheelhouse

1967-1972 Chevrolet Fleetside Truck

- 18 gauge steel reproduction of OE style pickup bed wheel well, curvature & mounting pattern.
- Black EDP coating for durability.
- Fits L/H or R/H side.

Item	Description	Pack
110867	Rear Inner Wheelhouse	1 Pc./Each



Outer Rear Wheelhouse Panel

1973-1987 Chevy & GMC Fleetside Truck

- Stamped 19 gauge sheet metal.
- OE style strengthening ribs & contours.
- Precision punched mounting holes for inner rear wheel house.
- Black EDP coated for durability.

Item	Description	Pack
111004	Left Hand	1 Pc./Each
111005	Right Hand	1 Pc./Each



Front Inner Fender

1967-1972 Chevrolet & GMC Truck

- Die stamped exactly as original.
- OE style curvature & mounting pattern.
- Black EDP coated for durability.

Item	Description	Pack
110865	Left Hand	1 Pc./Each
110866	Right Hand	1 Pc./Each



Rear Fender

1967 Chevy/GMC Stepside Truck

- Steel reproduction w/ OE style contour, w/o side marker mounting pocket.
- Black EDP coating for durability.
- Precision punched mounting holes w reinforcement strip along rolled edge.

Item	Description	Pack
110914	Left Hand	1 Pc./Each
110915	Right Hand	1 Pc./Each



Rear Fender

1968-1972 Chevy/GMC Stepside Truck

- Steel reproduction w/ OE style contour & side marker mounting pocket.
- Black EDP coating for durability.
- Precision punched mounting holes w/ reinforcement strip along rolled edge.

Item	Description	Pack
110912	Left Hand	1 Pc./Each
110913	Right Hand	1 Pc./Each

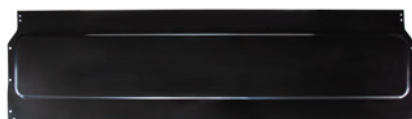


Outer Rocker Panel

1967-1972 Chevy & GMC Truck

- Excellent reproduction of the original rocker panel with all contour detail.
- Smooth top surface finish.
- Black EDP coated for durability.

Item	Description	Pack
110919	Left Hand	1 Pc./Wbox
110920	Right Hand	1 Pc./Wbox



Bed Front Panel

1967-1972 Chevrolet & GMC Fleetside Truck W/ Steel Bed Floor

- Made with 16 gauge steel.
- Plain smooth style panel design.
- OE style rolled over top flange w/ 1/4"-20 welded square nuts.
- Precision punched bed side panel mounting holes.
- Bottom flange match OE specification.
- Black EDP coated for durability.

Item	Description	Pack
110896	Bed Front Panel	1 Pc./Each



Primer Finished Outside Sunvisor

Late 1955-1959 Chevy & GMC Truck

- Reproduction w/ original detail.
- Precision punched mounting holes & center reinforcement brace.
- Ready for paint w/ primer coating.

Item	Description	Pack
C7016	Sunvisor	1 Pc./Cbox

HOW TO ORDER

To order from United Pacific Industries, you must be an authorized dealer, distributor or OEM. If you are not authorized to stock and sell United Pacific products, you must order through an authorized dealer. Please call 800.790.6988 for more information.

CONTACT US

8 am - 4:30 pm PST

800.790.6988 / 562.421.3888

888.986.5988

Sales@upauto.com

UPauto.com

3788 E. Conant St., Long Beach, CA 90808

QUALITY

With over 30 years of experience in the automotive aftermarket industry, United Pacific Industries understands the rigors and stresses that our products are subjected to on the road. It is our mission to provide our customers with products of superior quality and reliability. In achieving this goal, United Pacific only partners with manufacturing facilities that conforms to our quality control requirements and standards. Our manufacturing partners meet or exceed ISO-9001 requirements. In addition, United Pacific's manufacturing partners must be equipped on site to perform the following quality assurance tests and maintain a track record of consistent quality and low product failure rate.

Furthermore, our internal quality control structure allows us to function as the final quality control station prior to shipping.

With the assistance of 3D computer technology, United Pacific can adhere to strict quality control standards during prototype creation and the production process. Our engineers and technicians perform a battery of tests to ensure that our products meet the demands of today's drivers and our goal to be first in quality.

- Photometric Test
- Rain Test
- Shock Test
- Humidity Test
- Pull Force Test
- Salt Spray Test
- Temperature Test
- Vibration Test

INNOVATION

Known as the leader in innovation, United Pacific is dedicated to be the first to bring new and exciting products to the market. United Pacific's global expertise allows us to search the globe for new ideas and concepts. Not only do we search the globe for new products, United Pacific invest a significant amount of resources into our own research and development efforts. With the assistance of advance 3D scanning technology, our engineers and designers can acquire accurate and precise data in seconds. The 3D data allows United Pacific to verify designs, perform quality assurance tests, and reverse engineer with unprecedented speed and accuracy. Digital inspection contributes to the early detection of shape problems, provides rapid feedback on design, and eliminates unnecessary work in downstream processes. Our rapid prototyping facility permits us to have a concept-to-shelf time of less than 5 months. In addition, United Pacific's 3D printing capabilities permit our designers to have physical models of their design concepts in hours. The physical models allow our designers and marketing staff to evaluate and test the viability of different design ideas. Our rapid prototyping facility allow United Pacific to compress design cycles, improve manufacturing planning, shorten concept-to-shelf time, most importantly, generate new and innovative products.

DESIGN

Located near some of the nation's most progressive automotive design centers, United Pacific established the UP Design Studio in 2002 to consolidate our position as the design leader in the automotive industry. UP Design Studio utilizes the latest generation of computer aided design (CAD) and studio/graphic software. The design studio is equipped with the newest computers and rapid prototyping systems. In addition, UP Design Studio is staffed by graduates from the nation's most prestigious design colleges. Unlike our competitors, United Pacific's design and manufacturing capabilities mean that we carry more new and original items than our competitors. The establishment of the design studio will enable us to generate even more new products with significant shorter concept-to-shelf time. The reduction in development cost mean that we can develop products utilizing design based development processes. Design based product development allows United Pacific to create new product concepts based on designs incorporating driver demands and needs instead of economic considerations. United Pacific's emphasis on design distinguishes and positions us ahead of our competitors.



WARRANTY

With LED (Light Emitting Diodes) rated at 100,000 hours of operation and solid-state construction, United Pacific's LED lights are extremely reliable and durable. Purchase with confidence, United Pacific offers a complete line of LED lighting products with extended or limited lifetime warranties. Please see the warranty policy page for more details.

INVENTORY AND SHIPPING

United Pacific carries over 20,000 items in our California distribution center. No other company in the heavy duty trucking industry can match United Pacific in the variety and range of in-stock inventories. With an order fill rate of over 98.5%, United Pacific is the largest and most reliable supplier in the industry. Our shipping department ships 96.8% of all orders within 24 hours and 98.9% within 48 hours. United Pacific's vast inventory and prompt shipping has made United Pacific the only source for our customer's chrome and lighting needs.



HARD AT WORK FOR THE ENVIRONMENT



United Pacific
132,000 sq ft
Distribution Center
Long Beach, CA

LEED ACCOMPLISHMENTS

Sustainable Sites

- On-site bicycle storage, showers and changing areas for company employees.
- Preferred parking for low-emitting, fuel-efficient and carpool vehicles.
- Storm water is infiltrated on-site and treated to remove contaminants to reduce environmental impact on local waterways.

Water Efficiency

- In addition to using reclaimed water, drought-tolerant plants and a high-efficiency irrigation system were installed to reduce the use of potable water for irrigation by 100%.

Energy and Atmosphere

- Efficient HVAC equipment and a lighting system with daylight controls reduces energy consumption by over 30%.
- Enhanced commission verifies that the building's energy and water-related systems are performing as intended by the initial design.

Indoor Environmental Quality

- Building ventilation systems was designed to provide enhanced levels of fresh outside air to building occupants.
- Interior finishes (plants, sealants, adhesives, coatings, carpet systems and composite wood) were selected with low levels of volatile organic compounds (VOCs) to reduce indoor air contamination.

100% reduction in potable water used for landscaping

40% reduction in total energy use due to high-efficiency mechanical and lighting systems

82% of construction waste was diverted from landfills



Black Arm Rest (Pair)

1968-1977 Ford Bronco

- High quality synthetic leather in black finish.
- Mounting pocket w/ original mounting pattern for easy placement.

Item	Description	Pack
110840	Black Arm Rest	2 Pc./Card



Outside Door Handle

1978-1979 Ford Bronco & 1973-1979 Ford Truck

- Triple chrome plated finish
- Zinc die-cast w/ original features.
- Hardware included
- OE style inner arm design.

Item	Description	Pack
110969	Outside Door Handle	1 Pc./Card



Chrome Outside Door Handle

1980-1996 Ford Bronco F-150/F-250

- Triple chrome plating process finish.
- Zinc die-cast w/ original features.
- Durable black plastic push button.
- Mounting studs included for easy installation (M6X1.0 threaded).
- OE style latch rod bracket.

Item	Description	Pack
110966	Left Hand	1 Pc./Card
110967	Right Hand	1 Pc./Card



Billet Aluminum Window Crank Handle Kit

- Classic aircraft style brushed Al. finish.
- Universal application, 3 adapters included (circular, splined, & square).
- Set screws & hex wrench included.

Item	Description	Pack
24009	Pair	2 Pc. / Box



Billet Aluminum Door Handles Kit

- CNC milled billet aluminum w/ classic aircraft style brushed finish.
- Universal application, 3 adapters included (circular, splined, & square).
- Hardware included.

Item	Description	Pack
24039	Pair	2 Pc. / Box



Chrome Inside Door Handle

1978-1979 Ford Bronco & 1973-1979 F-Series Truck

- Exceptional quality zinc die-cast.
- High quality chrome plated finish w/ triple chrome plating process.
- Original design w/ rounded edges.
- Mounting screw included.

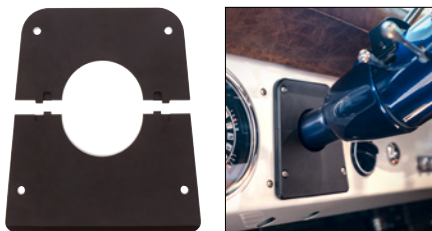
Item	Description	Pack
110971	Left Hand	1 Pc./Card
110972	Right Hand	1 Pc./Card



15" Woodgrain Steering Wheel For 3-Bolt Hub

- Wood grip w/ finger grooves & aluminum rivets.
- 304 premium grade stainless steel spokes w/ a dish depth of 4".
- This steering wheel is compatible w/ all 3-bolt steering wheel hub kits.

Item	Description	Pack
110794	Woodgrain Steering Wheel	1 Pc./Card



Anodized Billet Aluminum Steering Column Cover

1966-1977 Ford Bronco

- CNC milled from billet aluminum.
- 2 piece design for easy installation.
- Fits orig. 2 1/4" dia. steering columns.
- Durable black anodized finish to increase corrosion resistance.

Item	Description	Pack
110777	Black Anodized	1 Pc./Card



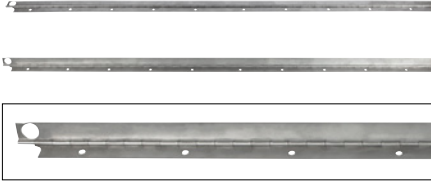
Rear Fuel Tank Strap

1966-1976 Ford Bronco

- Made of high-quality galvanized stamped steel.
- Black EDP coated to keep your new steel fresh and rust-free.
- J-bolt included for proper installation.

Item	Description	Pack
110806	Rear Fuel Tank Strap	1 Pc./Card

1966-1977
FORD BRONCO



Stainless Steel Windshield Frame Hinge

1966-1977 Ford Bronco

- High quality 304 grade 16 gauge.
- Machine punched holes for plug welding to windshield and cowl top panel.
- Notch and large hole for wiper motor wiring pass-through.

Item	Description	Pack
110595	Frame Hinge	1 Pc./Card



Chrome Exterior Mirror W/ Convex Glass & LED

1966-1977 Ford Bronco & 1967-1979 Truck

- High quality chrome plated finish.
- Special behind-the-mirror LED design.
- Easy 12V hookup.
- Includes mounting pad and screws.
- Convex mirror for wide angle visibility.

Item	Description	Pack
110738	Right Hand	1 Pc./Card



Stainless Steel Door Mirror

1973-1991 Chevy & GMC Full Size Truck

- Polished 304 grade stainless steel base cover, arm, & mirror housing.
- Original style design w/ heavy duty inner mounting bracket, mounting pad & installation fasteners.
- Fits L/H and R/H side.

Item	Description	Pack
60050	Door Mirror	1 Pc./Card



Panoramic 5-Panel Rearview Mirror

- Design provides wider rear view.
- Easy installation in most cars, trucks & power sports vehicles.
- Mounting hardware & instructions included.
- May interfere with sun visors on some applications.

Item	Description	Pack
60051	Rearview Mirror	1 Pc./Card



Black Day/Night Interior Rearview Mirror Assembly

Flat Type Mount

- Convenient day/night feature.
- Mounting plate included.

Item	Description	Pack
60052	8" Mirror Assembly	1 Pc./Card
60053	10" Mirror Assembly	1 Pc./Card



Chrome Rear View Mirror, Day/Nite

1964.5-1966 Ford Mustang & Early 1966-1977 Bronco

- High quality chrome plated finish w/ triple chrome plating process.
- High quality mirror glass face.
- Features day/night function w/ chrome plated day/nite script.

Item	Description	Pack
F646603	RV Mirror	1 Pc./Card



Chrome Interior Rear View Mirror Bracket

1968-1969 Ford Mustang & Early 1966-1977 Bronco

- High quality chrome plated finish w/ triple chrome plating process.
- Exceptional quality die-cast.
- Includes mirror head mounting screw.

Item	Description	Pack
110710	Rear View Mirror Bracket	1 Pc./Card



Upper Door Hinge

1980-1996 Ford Bronco & Truck

- Heavy duty 0.175" thick zinc plated casted steel reproduction.
- Precision milled door & A-pillar mounting holes to OE specification.

Item	Description	Pack
111022	Left Hand	1 Pc./Card
111023	Right Hand	1 Pc./Card



Lower Door Hinge

1980-1996 Ford Bronco/ F-150/F-250

- Heavy duty casted steel reproduction of the original.
- Black powder coated finish.
- Precision CNC milled mounting holes.
- Fits left or right hand side.

Item	Description	Pack
110968	Lower Door Hinge	1 Pc./Card



Clear Anodized Billet Aluminum Side Marker LT. Bezel

1970-1977 Ford Bronco

- CNC milled from billet aluminum.
- Durable anodized finish to increase corrosion resistance
- Includes two stainless steel screws and mounting gasket.

Item	Description	Pack
110774	Clear Anodized	1 Pc./Card



Front Fender W/ Sidemarker & Emblem Holes

1970-1977 Ford Bronco

- High quality 19 gauge sheet metal.
- Features all original fender curvature & mounting pattern.
- Original "Bronco" fender emblem.
- Coated w/ protective black EDP

Item	Description	Pack
110903	Left Hand	1 Pc./Card
110904	Right Hand	1 Pc./Card



Black Polymer Battery Hold Down Bracket

1970-1977 Ford Bronco & 1965-1972 Truck

- Quality thermoplastic polymer, reinforced w/ glass fiber.
- Feature original design w/ reinforcing rib structures & contour.
- Hardware included.
- Fits battery w/ width approx. 6 13/16".

Item	Description	Pack
110982	Battery Bracket	1 Pc./Card



Black Polymer Battery Hold Down Bracket

1978-1979 Ford Bronco & 1973-1979 Truck

- Quality thermoplastic polymer, reinforced w/ glass fiber.
- OE design w/ reinforcing rib structures & contour.
- Two zinc plated J-bolts w/serrated flange nuts included.

Item	Description	Pack
110983	Battery Bracket	1 Pc./Card



45 Degree Up Chrome Water Neck

Ford 289/302/351 with Small Block V8

- High quality chrome plated finish w/ triple chrome plating process.
- Exceptional quality zinc die-cast.
- Complete w/ thermostat housing, bolts and O-ring.

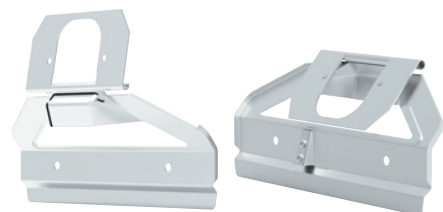
Item	Description	Pack
110347	Water Neck	1 Pc./Card



Titan Locking Gas Cap

- Top quality rugged all metal military style fuel cap design.
- Fits 1947-71 Chevy & GMC trucks, 1949-70 Ford cars, 1957-70 Ford trucks & Bronco.
- Vented gas cap for vented fuel systems only.

Item	Description	Pack
110874	Chrome Gas Cap	1 Pc./Card
110875	Black Gas Cap	1 Pc./Card



License Plate Bracket

1966-1977 Ford Bronco

- Heavy gauge steel w/ screws.
- Spring mounting base for flip-out.
- Fits standard US license plate w/ 6 15/16" mounting hole spacing.
- Overall dimensions length 12 1/8" by height 8 1/4"

Item	Description	Pack
110880	LP Bracket	1 Pc./Card

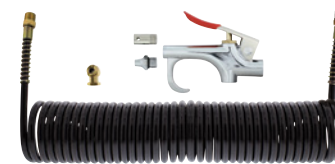


304 Stainless Steel License Light & Bracket

1966-1977 Ford Bronco

- 16 gauge stainless steel bracket.
- Pre-assembled w/ 4 white LEDs 1 1/2" round license plate light.
- Original style fits over existing license plate light
- Simple wiring w/ 2 wire leads.

Item	Description	Pack
110922	License Light & Bracket	1 Pc./Card



30 Feet Extension Hose W/ Air Chuck & Air Blow Gun Kit

- Heavy duty 30 feet long 5/16" OD, 1/4" ID coiled nylon hose.
- Pre-fitted w/ 1/4" NPT brass male connectors & steel spring guard.
- Includes air chuck & chrome plated air blow gun w/ additional tip accessories.
- Quality black nylon bag included.

Item	Description	Pack
89997	Extension Hose	1 Pc./Card



25 LED Amber Parking/Signal Light

1966-1968 Ford Bronco

- LED Dual Function
- Bright amber LED & acrylic lens.
- Epoxy coated, fully sealed electronics, 1157 plug.
- Fits left hand and right hand.
- Gasket included.

Item	Description	Pack
110858	25 LED Amber	1 Pc./Card



Anodized Billet Aluminum Turn Signal Bezel Set

1969-1976 Ford Bronco

- CNC milled from billet aluminum.
- Durable anodized finish
- Includes mounting gaskets.
- Sold in pairs

Item	Description	Pack
110837	Clear Anodized	1 Pc./Card
110838	Black Anodized	1 Pc./Card



Tail Light

1980-1988 Ford Bronco & 1980-1986 Truck

- Quality plastic lens w/ original reflective features and detail.
- Special protective coating on lens to prevent UV caused fading & hazing.
- Rear housing w/ OE socket openings.
- DOT/SAE, FMVSS 108.

Item	Description	Pack
111016	Left Hand	1 Pc./Card
111017	Right Hand	1 Pc./Card



High Power 1156 LED Bulb

- Single function LED bulb w/ max 275 lumens.
- 360 degrees surround illumination, 180 degrees front illumination.
- Long life sealed design.

Item	Description	Pack
36465	Amber Bulb	1 Pc./CBox
36466	Red Bulb	1 Pc./CBox
36467	White Bulb	1 Pc./CBox



High Power 1157 LED Bulb

- Dual function LED bulb: high 275 lumens/ low 150 lumens.
- Full 360 degrees surround coverage and 180 degrees front illumination.

Item	Description	Pack
36469	Amber Bulb	1 Pc./CBox
36470	Red Bulb	1 Pc./CBox
36471	White Bulb	1 Pc./CBox



High Power 8 LED 1157 Bulb

- 8 High Power SMD LEDs, 50 lumens 150 lumens.
- 12 V. double contact w/ off-set pins.
- Replaces most #1157 and #P21/5W applications.

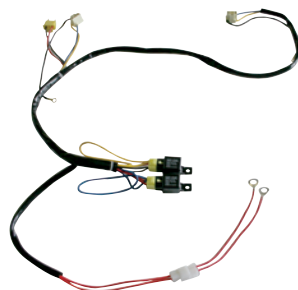
Item	Description	Pack
36443	White Bulb	2 Pc./CBox
36444	Red Bulb	2 Pc./CBox
36445	Amber Bulb	2 Pc./CBox



High Power 8 LED 1156 Bulb

- SMD LEDs, 150 lumens.
- Replaces most #1156 & #89 applications.
- 12 V single contact w/ straight-across pins.

Item	Description	Pack
38897	White Bulb	2 Pc./Card
38898	Red Bulb	2 Pc./Card
38899	Aber Bulb	2 Pc./Card



H4 HL Relay Harness Kit

- High amperage to headlamps.
- Corrects dim lights on classic cars and hot rods.
- Works on orig. style 6014 sealed beams & with any 12V DC system.

Item	Description	Pack
34263	Relay Harness	1 Pc. Box



Billet Aluminum Side Marker Bezel W/ Raised Side Protection

1970-1977 Ford Bronco

- CNC milled from billet aluminum
- Durable anodized finish.
- Includes 2 SS screws & mounting gasket.
- Sold each.

Item	Description	Pack
110772	Clear Anodized	1 Pc./Card
110773	Black Anodized	1 Pc./Card

FORD BRONCO
PRODUCT INDEX

<u>ITEM #</u>	<u>PAGE #</u>
24009	14
24039	14
34263	17
36443	17
36444	17
36445	17
36465	17
36466	17
36467	17
36469	17
36470	17
36471	17
38897	17
38898	17
38899	17
60050	15
60051	15
60052	15
60053	15
89997	16
110347	16
110595	15
110710	15
110738	15
110772	17
110773	17
110774	16
110777	14
110794	14
110806	14
110837	17
110838	17
110840	14
110858	17
110874	16
110875	16
110880	16
110903	16
110904	16
110922	16
110966	14
110967	14
110968	15
110969	14
110971	14
110972	14
110982	16
110983	16
111016	17
111017	17
111022	15
111023	15
F646603	15



United Pacific

1966-1977

FORD BRONCO

SPECIAL EDITION

NEW PRODUCTS SINCE 2020



ACSEMA22

FORD BRONCO & CHEVY C10 CATALOG



710270064168