



United Pacific

1966-1977

**FORD BRONCO**





The 1966 Ford Bronco was the beginning of an American Icon and to this day is still one of the most popular vehicles ever produced. Whether you are a classic car enthusiast, a hardcore off-roader or a steady daily driver, United Pacific has the replacement and restoration parts you need to make your Ford Bronco the build of your dreams.




As leaders in the industry, it is our mission to ensure the best fitment and function when it comes to your custom build. We understand the rigors and stresses that our products are subjected to on the road, so we partner with top manufacturing facilities that conform to our strict requirements and must perform quality assurance tests. It is our duty to provide our customers with products of superior quality and reliability.



#### HOW TO ORDER

To order from United Pacific Industries, you must be an authorized dealer, distributor or OEM. If you are not authorized to stock and sell United Pacific products, you must order through an authorized dealer. Please call 866.327.5288 for more information.

#### CONTACT US

-  8 am - 4:30 pm PST
-  866.327.5288 / 562.425.5588
-  888.986.6088 / 562.425.3632
-  Antique@upauto.com
-  UPauto.com
-  3788 E. Conant St., Long Beach, CA 90808

#### QUALITY

With over 30 years of experience in the automotive aftermarket industry, United Pacific Industries understands the rigors and stresses that our products are subjected to on the road. It is our mission to provide our customers with products of superior quality and reliability. In achieving this goal, United Pacific only partners with manufacturing facilities that conforms to our quality control requirements and standards. Our manufacturing partners meet or exceed ISO-9001 requirements. In addition, United Pacific's manufacturing partners must be equipped on site to perform the following quality assurance tests and maintain a track record of consistent quality and low product failure rate.

- Aging Test
- Air Tight Test
- Dust Test
- Flux Test
- Photometric Test
- Pull Force Test
- Rain Test
- Salt Spray Test
- Shock Test
- Temperature Test
- Humidity Test
- Vibration Test

Furthermore, our internal quality control structure allows us to function as the final quality control station prior to shipping. With the assistance of 3D computer technology, United Pacific can adhere to strict quality control standards during prototype creation and the production process. Our engineers and technicians perform a battery of tests to ensure that our products meet the demands of today's drivers and our goal to be first in quality.

#### INNOVATION

Known as the leader in innovation, United Pacific is dedicated to be the first to bring new and exciting products to the market. United Pacific's global expertise allows us to search the globe for new ideas and concepts. Not only do we search the globe for new products, United Pacific invest a significant amount of resources into our own research and development efforts. With the assistance of advance 3D scanning technology, our engineers and designers can acquire accurate and precise data in seconds. The 3D data allows United Pacific to verify designs, perform quality assurance tests, and reverse engineer with unprecedented speed and accuracy. Digital inspection contributes to the early detection of shape problems, provides rapid feedback on design, and eliminates unnecessary work in downstream processes. Our rapid prototyping facility permits us to have a concept-to-shelf time of less than 5 months. In addition, United Pacific's 3D printing capabilities permit our designers to have physical models of their design concepts in hours. The physical models allow our designers and marketing staff to evaluate and test the viability of different design ideas. Our rapid prototyping facility allow United Pacific to compress design cycles, improve manufacturing planning, shorten concept-to-shelf time, most importantly, generate new and innovative products.

#### DESIGN

Located near some of the nation's most progressive automotive design centers, United Pacific established the UP Design Studio in 2002 to consolidate our position as the design leader in the automotive industry. UP Design Studio utilizes the latest generation of computer aided design (CAD) and studio/graphic software. The design studio is equipped with the newest computers and rapid prototyping systems. In addition, UP Design Studio is staffed by graduates from the nation's most prestigious design colleges. Unlike our competitors, United Pacific's design and manufacturing capabilities mean that we carry more new and original items than our competitors. The establishment of the design studio will enable us to generate even more new products with significant shorter concept-to-shelf time. The reduction in development cost mean that we can develop products utilizing design based development processes. Design based product development allows United Pacific to create new product concepts based on designs incorporating driver demands and needs instead of economic considerations. United Pacific's emphasis on design distinguishes and positions us ahead of our competitors.



### WARRANTY

With LED (Light Emitting Diodes) rated at 100,000 hours of operation and solid-state construction, United Pacific's LED lights are extremely reliable and durable. Purchase with confidence, United Pacific offers a complete line of LED lighting products with extended or limited lifetime warranties. Please see the warranty policy page for more details.

### INVENTORY AND SHIPPING

United Pacific carries over 20,000 items in our California distribution center. No other company in the heavy duty trucking industry can match United Pacific in the variety and range of in-stock inventories. With an order fill rate of over 98.5%, United Pacific is the largest and most reliable supplier in the industry. Our shipping department ships 96.8% of all orders within 24 hours and 98.9% within 48 hours. United Pacific's vast inventory and prompt shipping has made United Pacific the only source for our customer's chrome and lighting needs.



### HARD AT WORK FOR THE ENVIRONMENT



**United Pacific**  
**132,000** sq ft  
**Distribution Center**  
**Long Beach, CA**

- 100%** reduction in potable water used for landscaping
- 40%** reduction in total energy use due to high-efficiency mechanical and lighting systems
- 82%** of construction waste was diverted from landfills

### LEED ACCOMPLISHMENTS

#### Sustainable Sites

- On-site bicycle storage, showers and changing areas for company employees.
- Preferred parking for low-emitting, fuel-efficient and carpool vehicles.
- Stormwater is infiltrated on-site and treated to remove contaminants to reduce environmental impact on local waterways.

#### Water Efficiency

- In addition to using reclaimed water, drought-tolerant plants and a high-efficiency irrigation system were installed to reduce the use of potable water for irrigation by 100%.

#### Energy and Atmosphere

- Efficient HVAC equipment and a lighting system with daylight controls reduces energy consumption by over 30%.
- Enhanced commission verifies that the building's energy and water-related systems are performing as intended by the initial design.

#### Indoor Environmental Quality

- Building ventilation systems was designed to provide enhanced levels of fresh outside air to building occupants.
- Interior finishes (plants, sealants, adhesives, coatings, carpet systems and composite wood) were selected with low levels of volatile organic compounds (VOCs) to reduce indoor air contamination.



# United Pacific

## FORD BRONCO

We partnered with Maxlider Brothers Custom for the 2018 SEMA Show, collaborating with them to build a custom '74 Ford Bronco using our steel replacement panels and LED lighting.



**2018**  
**SEMA SHOW**  
*Battle of the Builders*  
Top 10 Truck Build



**2019**  
**DETROIT AUTORAMA**  
*Radical Mini 4x4*  
1st Place



**2019**  
**BRONCO SUPER CELEBRATION**  
*Professional Builders*  
1st Place & Best of Show





# United Pacific

## FORD BRONCO

<b>BUILDER</b>	Maxlider Brothers Customs
<b>BODY</b>	Sheet metal by United Pacific Industries with hand built tub by Maxlider Brothers Customs
<b>ENGINE</b>	Ford Performance Coyote 5.0L Mustang engine
<b>TRANSMISSION</b>	Heavy Duty 4R70W by Bowler Transmission and CompuShift electronic controller
<b>TRANSFER CASE</b>	Atlas 2 from Advance Adapters
<b>CHASSIS</b>	Custom chassis by Maxlider Brothers Customs
<b>SUSPENSION</b>	Custom 4-link front, 3-link rear and long-arms by Black Beard Broncos with Fox coil-over shocks
<b>AXLES &amp; DIFFERENTIALS</b>	Currie axle housings, Yukon Gear and Axle differentials & axles, Randy's Driveshafts
<b>BRAKES</b>	Wilwood 4-wheel disc brakes
<b>TIRES</b>	33x12.5x15-inch BFGoodrich KM2's
<b>INTERIOR</b>	Custom leather seats and panels by Twin City Upholstery
<b>CAGE</b>	4-point interior cage by Black Beard Broncos
<b>COYOTE KIT</b>	(Brackets, cooling system, engine mounts, A/C, exhaust): BC Broncos
<b>GAUGES</b>	Classic Instruments cluster
<b>LIGHTS AND LENSES</b>	United Pacific Industries
<b>RUNNING BOARDS</b>	AMP Research powered running boards
<b>STEERING GEARBOX</b>	Steerco/AGR
<b>STEERING COLUMN</b>	Flaming River
<b>FUEL TANK</b>	Black Beard Broncos
<b>CONSOLE</b>	ICON 4x4
<b>ACCESSORIES</b>	Wire harness, body lift and bushings, glass, door handles/components, mirrors, switches, seat belts, hardware kit, fender flares: Wildhorses4x4
<b>SEALS, BUMPERS</b>	Bronco Graveyard



# United Pacific **FORD BRONCO**



## HOODS



1966-77 FORD BRONCO

### HOOD WITH WASHER HOLES & VENTS

- Die stamped with high quality 18 gauge sheet metal
- Uses the early 66-69 style hood rod prop location
- Pre-drilled fold down windshield u-bolt mounting holes with reinforced center brace
- Also has air box vent openings and washer mounting holes
- Black EDP coated finish
- *Oversize freight policy*

110460

## HOODS



1966-77 FORD BRONCO

### HOOD WITH VENTS

- Die stamped with high quality 18 gauge sheet metal
- Uses the early 66-69 style hood rod prop location
- Has air box vent openings and washer mounting holes
- Black EDP coated finish
- *Oversize freight policy*

110461



1966-77 FORD BRONCO

### HOOD WITH WASHER HOLES & VENTS

- Die stamped with high quality 18 gauge sheet metal
- Uses the 70-77 style hood rod prop location
- Has air box vent openings and washer mounting holes
- Black EDP coated finish
- *Oversize freight policy*

110462

## GRILLES



1966-68 FORD BRONCO

### GRILLE WITHOUT LOGO - BLACK EDP

- Die stamped with high quality 16 gauge sheet metal
- Feature all of the original contour detail and mounting brackets for the early small round signal lights
- Smooth center bar design without Ford letters to keep that clean front end look
- Black EDP coated finish
- Headlight adjusters included
- *Oversize freight policy*

110513



1966-77 FORD BRONCO

### GRILLE WITHOUT LOGO - CHROME

- Die stamped with high quality 17 gauge sheet metal
- Feature all of the original contour detail and mounting brackets for the larger turn signal lights
- Smooth center bar design without Ford letters to keep that clean front end look
- Beautiful show ready chrome plated finish
- Headlight adjusters included
- *Oversize freight policy*

110516



1969-77 FORD BRONCO

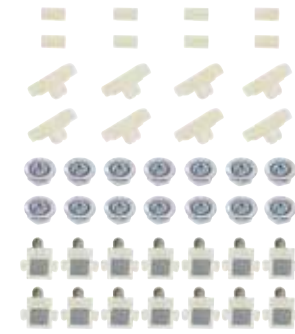
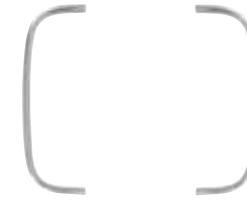
### GRILLE WITHOUT LOGO - BLACK EDP

- Die stamped with high quality 17 gauge sheet metal
- Feature all of the original contour detail and mounting brackets for the larger round signal lights
- Smooth design to keep that clean front end look
- Black EDP coated finish
- Headlight adjusters included
- *Oversize freight policy*

110515



## TRIM/EMBLEMS



1966-77 FORD BRONCO

### POLISHED ALUMINUM GRILLE TRIM MOLDING KIT

- Beautiful polished high quality aluminum extrusion with clear anodizing
- Overlapped connecting ends just like original
- Original connecting ends just like original

110594

**FORD**



1966-77 FORD BRONCO

### FORD GRILLE LETTER SET

- High quality chrome plated
- Comes with speed nuts for easy installation

110482



1966-77 FORD BRONCO

### CHROME BRONCO EMBLEM

- Beautifully chrome plated with triple chrome plating process
- Highly detailed bucking bronco
- Approximately 3 1/2" wide x 2 1/8" tall
- Double sided tape included

50130

**BRONCO**



1966-77 FORD BRONCO

### BRONCO GRILLE LETTER SET

- High quality die-cast & chrome plated with gloss red inlay
- 12 speed nuts and drill template included for easy installation
- Unique design made for aftermarket smooth style grilles without Ford lettering
- Official licensed product by Ford Motor Company

110499





## BUMPERS/FENDERS



### 1966-77 FORD BRONCO FRONT/REAR BUMPER

- Made with heavy 1/8" thick sheet metal
- Fits front or rear
- Features all original square shaped mounting holes
- Polished stainless steel bumper bolt set sold separately
- *Oversize freight policy*

110465 | Chrome

110466 | Black

110536 | Bumper bolt set



### 1966-77 FORD BRONCO FRONT FENDER

- Die stamped 19 gauge sheet metal
- Features all original fender curvature and mounting pattern, without sidemarker cutout and emblem stud holes
- Black EDP coated finished
- Sold individually, please specify left or right side
- *Oversize freight policy*

110463 | Driver LH

110464 | Passenger RH

## FENDER HARDWARE



### 1966-77 FORD BRONCO FRONT FENDER APRON

- Quality 20 gauge stamped steel
- Features all original contour and mounting patterns for front fender installation
- Coated with weldable primer
- Sold individually, please specify left or right side

110365 | Driver LH

110364 | Passenger RH



### 1966-77 FORD BRONCO FRONT FENDER LOWER BRACE WITH J-NUTS

- High quality die-stamped 18 gauge sheet metal
- Features strengthening gusset just like original
- Includes 5/16-18 J-nuts for easy installation to fender and fender apron
- Zinc plated finish for corrosion resistance

110596



### 1966-77 FORD BRONCO 18FT FENDER FLARE ROLL

- 18ft roll of fender flare welting
- Welting mounts between the flare and the body to provide a finished edge
- 1/16" bead, 1 1/4" wide, 1/16" thick, heat & UV resistant black PVC material
- Each 18' roll is enough for 2 flares, 2 sets required for full bronco

110539



### 1966-77 FORD BRONCO FRONT FENDER SUPPORT BRACKET

- Heavy duty steel rod with flattened ends
- Same exact length as original for easy installation
- 5/16-18 threaded mounting holes
- Zinc plated finish for corrosion resistance

110592 | LH

110593 | RH



### 1966-77 FORD BRONCO QUARTER PANEL SUPPORT BRACKETS

- Heavy duty steel rod with flattened ends
- Same exact length as original for easy installation
- 1/4-20 threaded mounting holes
- Zinc plated finish for corrosion resistance

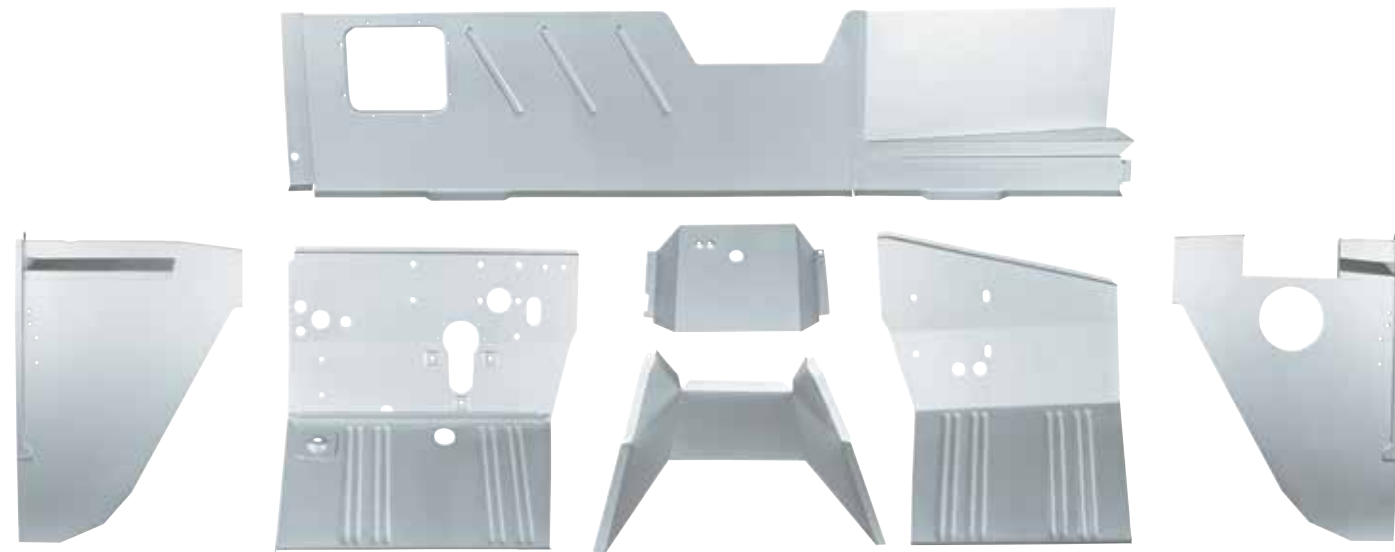
110591

## FIREWALL



### 1966-77 FORD BRONCO FIREWALL ASSEMBLY

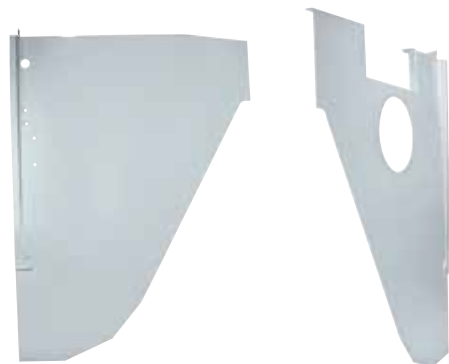
- High quality steel reproduction
  - Die stamped with high quality 18 gauge sheet metal
  - Features all original 1966 contour detail and cutouts
  - Coated with weldable primer
  - Fully assembled for quick drop in restorations
  - *Oversize freight policy*
- 110369**



### 1966-77 FORD BRONCO

#### FIREWALL KIT

- Excellent quality steel Firewall Kit
  - Made with excellent quality 18 gauge sheet metal
  - Features all original 1966 contour detail and cutouts
  - Coated with weldable primer
  - Kit includes: left & right kick panel, left & right dash panel, upper & lower dash panel, cowl lower panel
  - User assembly is required
  - *Oversize freight policy*
- 110535**



### 1966-77 FORD BRONCO OUTER COWL SIDE PANEL

- Heavy 18 gauge stamped sheet metal as original
  - Coated in weldable primer
  - Sold individually, please specify left or right side
- 110240 | Driver LH**  
**110241 | Passenger RH**

## RADIATOR SUPPORT/WINDSHIELD FRAME



### 1966-77 FORD BRONCO RADIATOR SUPPORT

- Die stamped 16 gauge sheet metal with reinforcing steel gussets
  - Includes heavy 12 gauge lower radiator support brackets & cradles
  - Coated in weldable primer
- 110385**



### 1966-77 FORD BRONCO WINDSHIELD FRAME

- Accurate reproduction with all of the original contours and details
  - Roll-formed with 16 gauge steel, black EDP coated finish
  - Windshield frame includes windshield hinge attached
  - OEM Number: C9TZ-9703114-A
  - *Oversize freight policy*
- 110397**



### 1966-77 FORD BRONCO WINDSHIELD FRAME HINGE

- Original piano hinge design
  - Heavy duty 16 gauge steel, black EDP coated finish
- 110398**



### 1968-77 FORD BRONCO WINDSHIELD TO COWL MOUNT

- Essential component for connecting the firewall and the front windshield hinge
  - Die stamped with 18 gauge steel, coated in weldable primer
- 110349**



### 1966-77 FORD BRONCO COWL BRACES 4PC. SET

- High quality 17 and 19 gauge stamped steel
  - Black EDP coated finish
  - Fill the empty upper corner area between the windshield cowl mount and the a-pillar
- 110590**

## DASH ACC./WINDOW ASSEMBLY



1966-77 FORD BRONCO  
**DASH PANEL ASSEMBLY**

- Die stamped with quality 20 gauge sheet metal
  - Features the later 73-77 original style contour and components cutouts
  - Single din radio cutout for easy installation of modern head units
  - Coated in weldable primer
- 110502**



1966-67 FORD BRONCO  
**VENT WINDOW HANDLES**

- Beautifully die-cast and chrome plated as original
  - Includes mounting hardware
  - Sold in pair
- 110131**



1968-77 FORD BRONCO  
**VENT WINDOW HANDLES**

- Beautifully die-cast and chrome plated as original
  - Includes mounting hardware
  - Sold in pair
- 110132**



1966-77 FORD BRONCO  
**CHROME VENT WINDOW ASSEMBLY**

- Beautifully chrome plated
  - Fully assembled and ready to install
  - Sold individually, please specify left or right side
- 110218 | Driver LH**  
**110219 | Passenger RH**



1966-77 FORD BRONCO  
**VENT WINDOW ASSEMBLY**

- Retains all original contour and detail
  - Black coated inner frame with untinted glass
  - Chrome plated vent handle and outer frame with door window felt
  - Sold individually, please specify left or right side
- 110273 | Driver LH**  
**110274 | Passenger RH**

## DOOR SHELLS



1966-67 FORD BRONCO  
**DOOR SHELLS**

- Die-stamped with high quality 20 gauge sheet metal, features all of the original 66-67 contour detail
  - Perfect for replacing that damaged door skin on the original door shell
  - Black EDP coated finish
  - Sold individually, please specify left or right side
- 110370 | Driver LH**  
**110371 | Passenger RH**



1968-77 FORD BRONCO  
**DOOR SHELLS**

- Die-stamped with high quality 20 gauge sheet metal, features all of the original 68-77 contour detail
  - Perfect for replacing that damaged door skin on the original door shell
  - Black EDP coated finish
  - Sold individually, please specify left or right side
- 110372 | Driver LH**  
**110373 | Passenger RH**



1968-77 FORD BRONCO  
**DOOR SKIN**

- Excellent 20 gauge stamped sheet metal reproduction of the door skin with all of the original contour detail
  - Perfect for replacing that damaged door skin on the original door shell
  - Black EDP coated finish
  - OEM Number: C9TZ-9720125-A
  - Sold individually, please specify left or right side
- 110356 | Driver LH**  
**110357 | Passenger RH**

## DOOR MOUNT/HANDLES



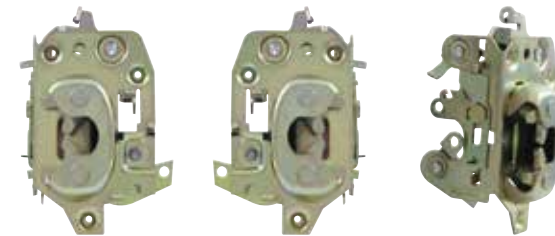
1966-77 FORD BRONCO

### DOOR HINGE

- All mounting holes and threads fully machined & ready to install
- Precision steel for strength & durability
- Sold individually, please specify left or right side

110352 | Driver LH

110353 | Passenger RH



1968-77 FORD BRONCO

### DOOR LATCHES

- Exact copy of the original Bronco door latch
- Precision stampings with original design mechanism
- Mounting hardware not included
- Sold individually, please specify left or right side

F20012 | Driver LH

F20013 | Passenger RH



1966-77 FORD BRONCO

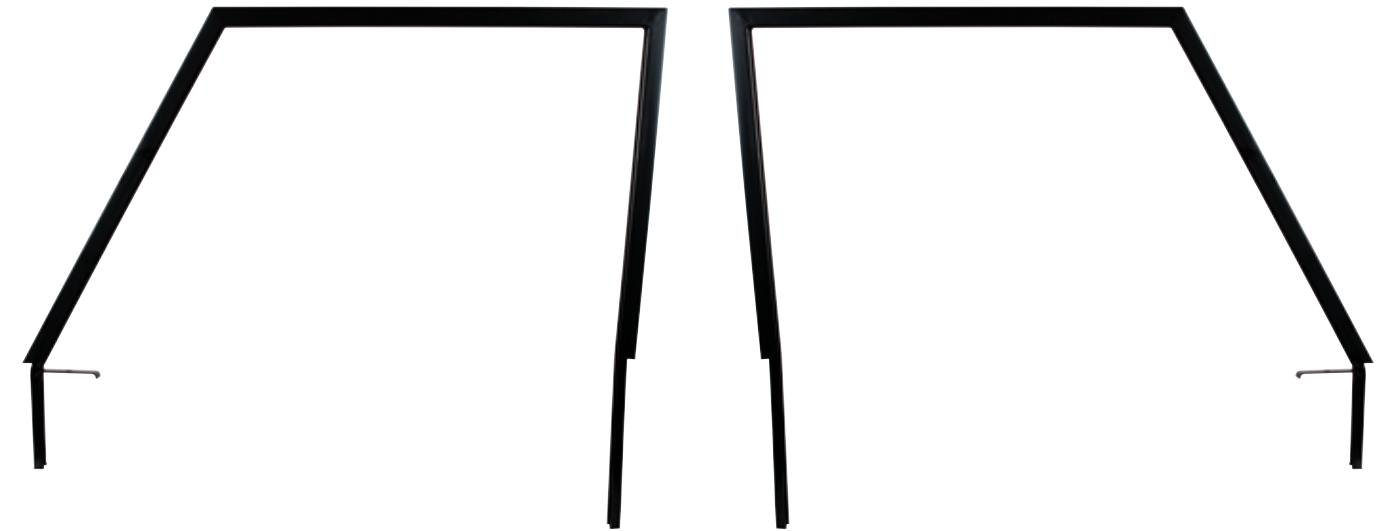
### CHROME OUTSIDE DOOR HANDLE SET

- Beautiful chrome plated finish with triple chrome plating process
- Excellent reproduction with original contour and size
- Original style inner linkage design for straight forward replacement
- Complete set includes pair of handles, mounting pads and hardware included

110824



## WINDOW FRAME/REGULATORS



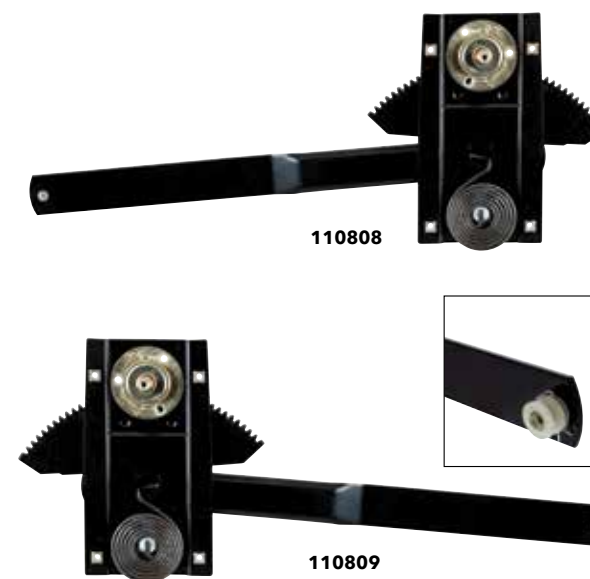
1966-68 FORD BRONCO

### DOOR WINDOW FRAME

- Excellent steel reproduction with the original mounting design and contour
- Black EDP coated finish
- Thread plated welded to frame for easy mounting to door shell
- OEM #: C6TZ-9722220-A / C6TZ-9722221-A
- Sold individually, please specify left or right side

110478 | Driver LH

110479 | Passenger RH



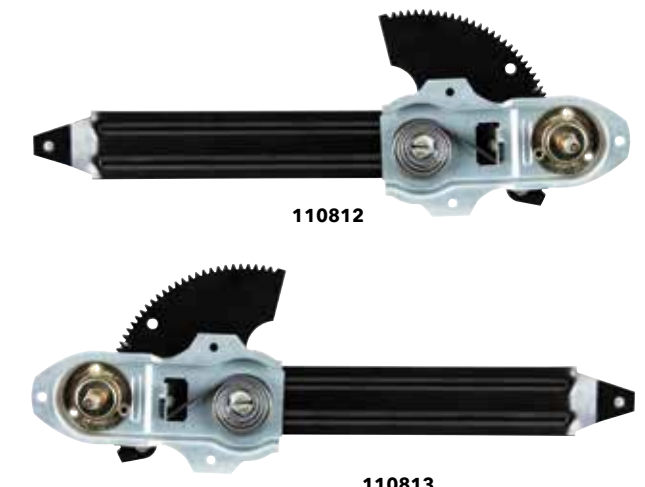
1966-77 FORD BRONCO

### WINDOW REGULATOR

- Excellent quality high strength steel stamping
- Original style counter balance spring design
- Window channel roller and retainer ring included
- Replaces OEM number: 710270058501 (L/H / 710270058518 (R/H)
- Sold individually, please specify left or right hand side

110808 | Driver LH

110809 | Passenger RH



1973-79 FORD BRONCO

### WINDOW REGULATOR

- Excellent quality high strength steel stamping
- Original style counter balance spring design
- OEM specification for easy installation
- Replaces OEM number: 710270058549 (L/H / 710270058556 (R/H)
- Sold individually, please specify left or right hand side

110812 | Driver LH

110813 | Passenger RH

## REAR VIEW MIRRORS

1966-77 FORD BRONCO

### CHROME EXTERIOR MIRROR

- Exceptional quality die cast metal and beautifully chrome plated
  - Includes mounting pad and screws
  - Fits L/H or R/H side
  - Sold each
- 110735**



1966-77 FORD BRONCO

### CHROME EXTERIOR MIRROR W/LED TURN SIGNAL

- Exceptional quality die cast metal and beautifully chrome plated
  - Special behind-the-mirror LED design, hidden when not in use
  - Easy 12V hookup, just route wire through door jamb and connect to front turn signal wires under dash near steering column
  - Includes mounting pad and screws
  - Sold each
- 110736**



1966-77 FORD BRONCO

### CHROME EXTERIOR CONVEX MIRROR

- Exceptional quality die cast metal and beautifully chrome plated
  - Convex mirror for wide angle visibility
  - Includes mounting pad and screws
  - Sold each
- 110737**

## REAR VIEW MIRRORS



## DOOR PILLARS



1966-67 FORD BRONCO

### A-PILLAR HINGE JAMB POST

- Excellent stamped 17 gauge sheet metal
- Exact duplicate of the factory OEM door pillar
- Has heavy duty hinge backing plates as original with 5/16-18 thread
- Coated in weldable primer
- Sold individually, please specify left or right side
- OEM#: C6TZ-9602501-A

**110233 | Driver LH**  
**110234 | Passenger RH**



1968-77 FORD BRONCO

### A-PILLAR HINGE JAMB POST

- Excellent stamped 17 gauge sheet metal
- Exact copy of the original bronco a-pillars
- Coated in weldable primer
- Sold individually, please specify left or right side

**110509 | Driver LH**  
**110510 | Passenger RH**



1966-77 FORD BRONCO

### B-PILLAR REINFORCEMENT

- Stamped heavy 16 gauge sheet metal
- Exact copy of the original Bronco b-pillars
- Coated in weldable primer
- Sold individually, please specify left or right side

**110511 | Driver LH**  
**110512 | Passenger RH**



1966-67 FORD BRONCO

### DOOR STRIKER KIT

- Heavy duty steel reproduction of the original striker
- Round latch stud
- Includes one shim and two 5/16 - 18 screws
- Fits both the left or right hand side

**110476**



1968-77 FORD BRONCO

### DOOR STRIKER KIT

- Heavy duty steel reproduction of the original striker
- Original style oval latch stud
- Includes two shims and two 5/16 - 18 screws
- Fits both the left or right hand side

**110477**

## PILLARS/ROCKER PANELS



1968-77 FORD BRONCO

### B-PILLAR DOOR JAMB

- Excellent die stamped 17 gauge sheet metal reproduction of the door B-pillar jamb post with all of the original contour detail
- Includes door latch striker plate, striker plate shims, striker plate screws & upper corner filler strip
- Coated in weldable primer
- Sold individually, please specify left or right side

• OEM Number: C8TZ-9628161-A

**110354 | Driver LH**  
**110355 | Passenger RH**



1966-67 FORD BRONCO

### B-PILLAR DOOR JAMB

- Excellent stamped 17 gauge sheet metal
- Features all original contour and detail
- Caged striker mounting plate with 5/16-18 tapped holes
- Includes upper pillar post extension
- Coated with weldable primer
- Sold individually, please specify left or right side

**110474 | Driver LH**  
**110475 | Passenger RH**

1968-77 FORD BRONCO

### INNER ROCKER PANEL

- Excellent reproduction of the original inner rocker panel with all contour detail
- Made with 18 gauge steel, coated in weldable primer
- Sold individually, please specify left or right side

• OEM Number: C6TZ-16505-A

**110269 | Driver LH**  
**110270 | Passenger RH**



1966-77 FORD BRONCO

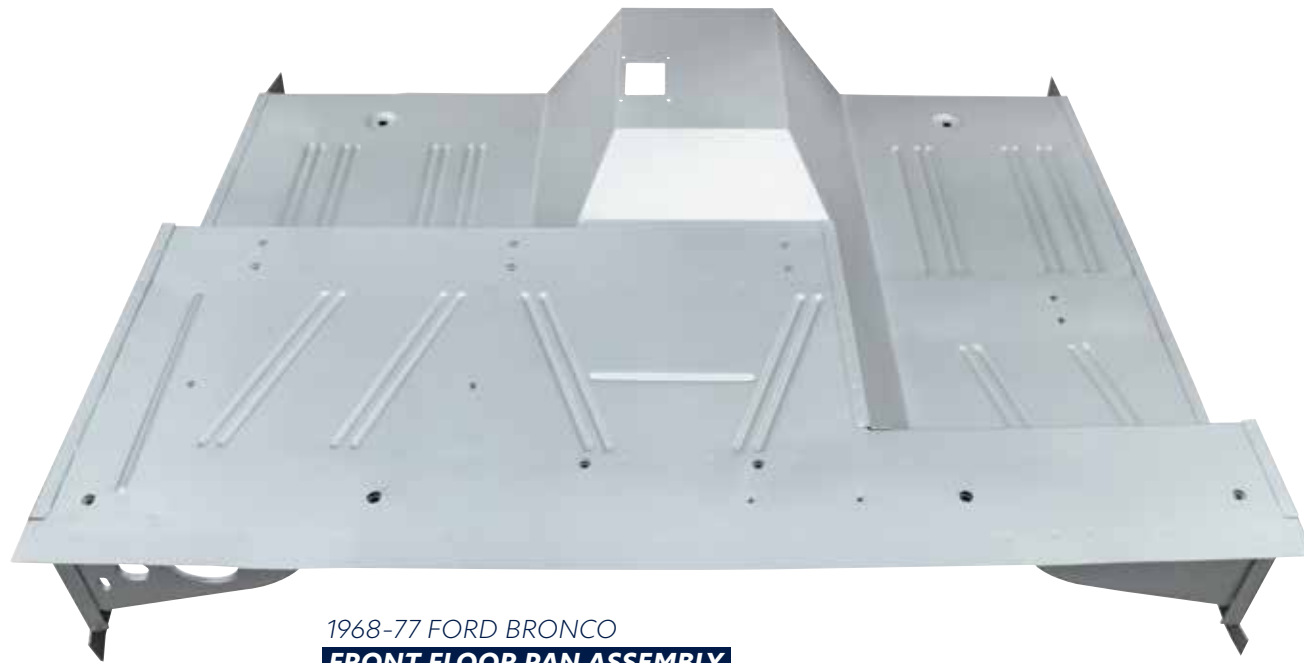
### ROCKER PANEL

- Excellent stamped sheet metal reproduction of the rocker panel with all of the original contour detail
- Die stamped with 18 gauge steel
- Coated in weldable primer
- Fits both the left and right hand sides

**110336**



## FLOOR PAN/BRACES



### 1968-77 FORD BRONCO FRONT FLOOR PAN ASSEMBLY

- Heavy 18 gauge stamped sheet metal as original
  - Fully assembled with inner rocker panels, under floor braces, and supports
  - Coated in weldable primer
  - *Oversize freight policy*
- 110504**

### 1966-67 FORD BRONCO FLOOR PAN BRACES

- Center and front floor pan brace made out of 14 gauge stamped sheet metal
  - Rear floor pan brace made out of 15 gauge stamped sheet metal
  - Coated in weldable primer
  - Sold separately, please specify center, front, or rear
- 110235 | Center Floor Pan Brace**  
**110236 | Front Floor Pan Brace**  
**110237 | Rear Floor Pan Brace**



### 1966-77 FORD BRONCO FRONT FLOOR PAN SUPPORT BRACES

- Heavy 14 gauge stamped sheet metal as original
  - Coated in weldable primer
  - Sold in sets
- 110242**



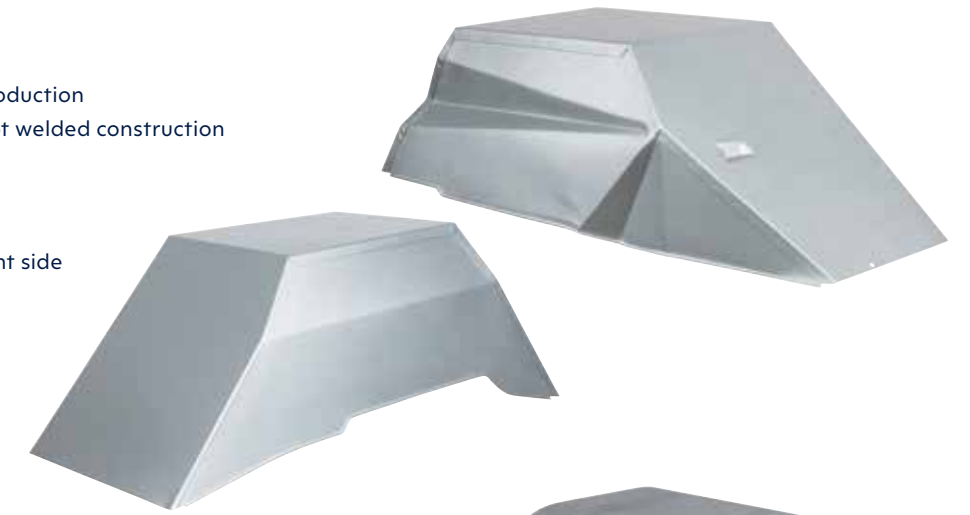
### 1966-77 FORD BRONCO REAR FLOOR PAN SUPPORT BRACES

- Heavy 14 gauge stamped sheet metal as original
  - Coated in weldable primer
  - Sold in sets
- 110238**

## WHEELHOUSE/BRACES

### 1966-77 FORD BRONCO WHEELHOUSE

- High quality 18 gauge stamped steel reproduction
  - Features all original design and tough spot welded construction
  - L/H side require modification for Bronco with power steering or power brake
  - Coated with weldable primer
  - Sold individually, please specify left or right side
- 110366 | Passenger RH**  
**110367 | Driver LH**



### 1966-77 FORD BRONCO INNER REAR WHEELHOUSE

- Heavy 18 gauge stamped sheet metal as original
  - Coated in weldable primer
  - Sold individually, please specify left or right side
- 110277 | Passenger RH**  
**110278 | Driver LH**



### 1966-77 FORD BRONCO WHEELHOUSE TO CORE SUPPORT BRACES

- Heavy duty 14 gauge sheet metal
  - Body mount bracket comes spot welded for easy and quick body to frame mounting
  - Features mounting holes on each brace for battery tray installation
  - Coated with weldable primer
  - 3 Piece set
- 110368**



### 1966-77 FORD BRONCO WHEELHOUSE FILLER PLATES

- Heavy 15 gauge stamped sheet metal as original
  - Modification required for installation on 1977 Bronco
  - Coated in weldable primer
  - Sold individually, please specify left or right side
- 110275 | Passenger RH**  
**110276 | Driver LH**

## CORNER/QUARTER PANELS



1966-77 FORD BRONCO

### BED STAKE CORNER

- Quality 16 gauge die stamped sheet metal reproduction with all of the original contour detail
- Coated in weldable primer
- Sold individually, please specify left or right side

110350 | Driver LH

110351 | Passenger RH



1966-77 FORD BRONCO

### TAIL LIGHT HOUSING CORNER PANEL

- Heavy 17 gauge stamped sheet metal as original
- Coated in weldable primer
- Sold individually, please specify left or right side

110271 | Driver LH

110272 | Passenger RH



1966-77 FORD BRONCO

### LOWER QUARTER PANEL SKIN

- Fix that cut-up Bronco with fresh new 20 gauge sheet metal quarter panels
- Full panels from seam to seam (not patches)
- Coated in weldable primer
- Sold individually, please specify left or right side
- OEM#: C6TZ-9627817-A

110334 | Driver LH

110335 | Passenger RH



1966-77 FORD BRONCO

### BED/INNER QUARTER PANEL

- This panel is the cap of the quarter panel and inside panel of the bed area
- Made with quality 17 gauge sheet metal
- Coated in weldable primer
- Sold individually, please specify left or right side
- OEM#: C6TZ-9627815-A

110332 | Driver LH

110333 | Passenger RH

## CARGO BED/TAILGATE



1966-77 FORD BRONCO

### CARGO BED / FLOOR PAN

- Die stamped with quality 17 gauge sheet metal
- Features all original grooves and mounting holes
- Coated in weldable primer
- *Oversize freight policy*

110328



1966-77 FORD BRONCO

### BED SUPPORT CROSS RAIL

- Die stamped with heavy 14 gauge sheet metal
- Features all original contour and detail
- Coated in weldable primer

110327



1978-86 FORD BRONCO

### TAILGATE SILL PLATE

- Quality aluminum extrusion with clear anodized finish
- Machine drilled mounting hole with countersink
- Mounting hardware included

110791

1966-77 FORD BRONCO

### TAILGATE

- Plain style tailgate without Ford letters
- High quality heavy 16 gauge steel aftermarket reproduction of the original Ford tailgate
- Precision cut latch handle pocket with 1/4"-20 welded nuts and recessed mounting holes on the inside panel
- Includes tailgate linkage posts, tailgate trunnion pockets, and latch pockets with 5/16"-18 threaded holes
- Features license plate light pocket, wiring holes, and small 0.087" diameter mounting holes
- Finished with black EDP protective coating to keep your new steel fresh and rust-free

110884





## HEADERS



## HEADERS



### 1966-77 FORD BRONCO

#### **289/302/351W LONG TUBE HEADERS**

- Fits all 1966-77 Broncos with a 289, 302, or 351W V8 engine
- Extra-thick 16 gauge 1 1/2" mandrel-bent tube
- 3/8" thick laser cut flanges resist warping
- Designed to provide ample clearance for tight areas
- Long tube design delivers maximum horsepower and torque
- Finished with Hi-Temp black paint, slowly fades to a matte grey after use or metallic ceramic coating, for better heat, rust, and scratch resistance
- Kit includes: Left & Right headers, exhaust gaskets, 3" collectors, collector gaskets, and all necessary header bolts, sold in pairs

**110588 | Black**

**110589 | Metallic**

## FUEL TANK/BATTERY TRAY



1966-77 FORD BRONCO  
**BATTERY TRAY**

- Excellent reproduction of the original design
  - Die stamped steel, painted black
- 110557**



1966-77 FORD BRONCO  
**FUEL TANK**

- Die stamped with Ni-Terne treated steel sheet
  - Features all of the original detail and contour
  - Approximately 13 gallon fuel capacity
  - Precision notched fuel tank strap recesses for better positioning during installation
- 110561**



1966-77 FORD BRONCO  
**TANK FILLER GUARD SET**

- Made with high quality 17 gauge sheet metal
  - Has identical curvature and detail as original
  - Coated in weldable primer for easy attachment to wheel house and inner quarter panel
  - Front and back guard included
- 110331**



1966-69 FORD BRONCO  
**BATTERY HOLD-DOWN BRACKET**

- Anti-corrosive vinyl plastisol coating
- 110522**



1966-76 FORD BRONCO  
**FUEL SENDING UNIT**

- Made with corrosion resistant stainless steel
  - Brass float just like the original
  - Includes rubber seal, stainless steel lock ring, and strainer
- 110664**



1966-77 FORD BRONCO  
**AUXILIARY FUEL TANK SENDING UNIT**

- Made with corrosion resistant stainless steel
  - Brass float just like the original
  - Includes rubber seal, stainless steel lock ring, and strainer
- 110665**



1966-77 FORD BRONCO  
**BATTERY HOLD-DOWN "J" BOLT SET**

- Anti-corrosive coating, zinc plated
  - Sold in pair
- 110523**

## VENTS/WIPER ARMS/WINDOW PROP



1966-77 FORD BRONCO  
**HEATER VENT**

- Injection molded with high quality plastic
  - Has all of the original contour and mounting holes
- 110330**



1966-77 FORD BRONCO  
**HEATER BOX**

- Accurate reproduction heater box
  - Features original style defroster duct selector
  - Original style speed nuts included for fan motor mounting
- 110329**



1966-77 FORD BRONCO  
**WIPER ARM & BLADE KIT**

- Perfect upgrade for classic 1966-77 Ford Broncos
  - Polished stainless steel wiper arms with chrome plated shaft mounts
  - Kit includes two wiper arms and two 12" wiper blades
- 110299**



1966-77 FORD BRONCO  
**FRESH AIR VENT BOX**

- Driver side air vent box with door
  - Includes foam seals throughout the box like the factory original
- 110239**  
Air Vent Box Foam Gasket available separately  
**110095**



1966-77 FORD BRONCO  
**REAR WINDOW PROP**

- Accurate reproduction of the steel rear window props with toggle latch mechanism as original
  - Bright zinc plated as original
  - Sold in pair
- 110399**

## LED HEADLIGHTS



### 7" 5 LED DUAL FUNCTION HEADLIGHT-CHROME

- 5 High power LED 7" headlight, Philips Lumileds
  - Reinforced aluminum reflector, rugged anti-vibration construction
  - Improved visibility with whiter light output that is closer to the color temperature of daylight
  - DOT and SAE compliant, sold individually
- 31391**



### 7" 5 LED DUAL FUNCTION HEADLIGHT-BLACK

- 5 High power LED 7" headlight, Philips Lumileds
  - Reinforced aluminum reflector, rugged anti-vibration construction
  - Improved visibility with whiter light output that is closer to the color temperature of daylight
  - Sold individually
- 31289**



## LED HEADLIGHTS



### 7" LED DUAL FUNCTION HEADLIGHT

- High power LED 7" headlight with durable corrosion resistant polycarbonate lens & housing
  - Solid state design resists shock and vibration
  - Easy connection, fits OEM housing, plugs into existing wiring harness, position light requires additional wiring
  - Low beam 500 lumens, 12-24V DC input, high beam 950 lumens
- 31084**



### 7" HIGH POWER LED CRYSTAL HEADLIGHT-CHROME

- 11 High power LED 7" crystal headlight, SAE/DOT FMVSS108
  - Impact resistant polycarbonate lens provides unparalleled protection from road hazards
  - Improved visibility with whiter light output that is closer to the color temperature of daylight
  - Die-cast aluminum housing provides maximum protection from the elements. Sold individually
- 31355**



### 7" HIGH POWER LED CRYSTAL HEADLIGHT-BLACKOUT

- 11 High power LED 7" crystal headlight, SAE/DOT FMVSS108
  - Impact resistant polycarbonate lens provides unparalleled protection from road hazards
  - Improved visibility with whiter light output that is closer to the color temperature of daylight
  - Die-cast aluminum housing provides maximum protection from the elements. Sold individually
- 31353**

## LED HEADLIGHTS



### 7" HIGH POWER LED PROJECTION HEADLIGHT W/ LED HALO RING

- 7" High power LED projection headlight with dual function 60 LED halo ring
- Dual color white/amber auxiliary LED halo ring with amber automatic override feature
- Die-cast housing and polycarbonate lens provide maximum protection and durability
- Solid state design resists shock and vibration, IP67 weatherproof rating
- DOT and SAE compliant, sold individually

31496



### 7" HIGH POWER LED HEADLIGHT W/ LED POSITION LIGHT BAR

- High power LED 7" headlight with white LED turn signal/position light bar
- Easy installation, fits OEM housing, plugs into existing wiring harness
- LED position light requires additional wiring, pre-wired with 0.156" diameter male bullet
- Low beam 900 lumens, high beam 1300 lumens. Sold individually

31459



### 7" HIGH POWER LED HEADLIGHT W/ LED POSITION LIGHT BAR

- High power LED 7" headlight with amber LED turn signal/position light bar
- Easy installation, fits OEM housing, plugs into existing wiring harness
- LED position light requires additional wiring, pre-wired with 0.156" diameter male bullet
- Low beam 900 lumens, high beam 1300 lumens. Sold individually

31458

## LED HEADLIGHTS



### 7" HIGH POWER LED HEADLIGHT W/ LED POSITION LIGHT BAR

- High power LED 7" headlight with durable corrosion resistant polycarbonate lens & housing
- Solid state design resists shock and vibration
- Easy connection, fits OEM housing, plugs into existing wiring harness, position light requires additional wiring
- Low beam 1,000 lumens, high beam 2,000 lumens

31200



### 7" HIGH POWER LED HEADLIGHT W/ LED POSITION LIGHT BAR

- 3 High power LED 7" headlight w/ 10 LED daytime running light bar
- 900 Lumen output on low and 1,600 lumen output on high
- White position light bar can be wired as daytime running light, amber position light bar can be wired as turn signal
- Easy installation, fits OEM housing, plugs into existing wiring harness
- DOT and SAE compliant, sold individually

31513



### 7" HIGH POWER LED HEADLIGHT W/ LED POSITION LIGHT BAR

- 3 high power LED 7" headlight w/ 10 LED daytime running light bar
- 900 lumen output on low and 1,600 lumen output on high
- White position light bar can be wired as daytime running light, amber position light bar can be wired as turn signal
- Easy installation, fits OEM housing, plugs into existing wiring harness
- DOT and SAE compliant, sold individually

31514

## LED HEADLIGHTS



### 7" CRYSTAL HEADLIGHT W/ LED POSITION LT

- 7" crystal headlight with 6 hi/low function amber LED position lights
- Reinforced aluminum reflector with rugged anti-vibration construction
- DOT/SAE Hr 15, LED for auxiliary/utility purposes, sold individually
- Includes 9007 halogen bulb and seal beam/H4 plug adapter
- 12V, dual function auxiliary LEDs have three wire hookup

31247



### 7" CRYSTAL HEADLIGHT W/ AMBER LED HALO RING

- 7" Crystal headlight with amber LED halo ring and 9007 bulb
- Reinforced multi-surfaced, aluminum reflector
- Sold Individually

31284



### 7" CRYSTAL HEADLIGHT W/ WHITE LED HALO RING

- 7" Crystal headlight with white LED halo ring and 9007 bulb
- Reinforced multi-surfaced, aluminum reflector
- Sold Individually

31285

## LED HEADLIGHTS



### 7" CRYSTAL HEADLIGHT WITH 34 AMBER AUXILIARY LED

- 34 amber LEDs with clear lens
- Anti-vibration structural design with reinforced multi-surfaced aluminum reflector housing
- H4/HB2/9003 halogen bulb: 12V 65/55W, replaces H6017/H6024
- HB2/9003 DOT/SAE code: DOT SAE-HR1-01
- Sold individually

31378



### 7" CRYSTAL HEADLIGHT WITH 34 WHITE AUXILIARY LED

- 34 white LEDs with clear lens
- Anti-vibration structural design with reinforced multi-surfaced aluminum reflector housing
- H4/HB2/9003 halogen bulb: 12V 65/55W, replaces H6017/H6024
- HB2/9003 DOT/SAE code: DOT SAE-HR1-01
- Sold individually

31379



### 7" HALOGEN SEALED BEAM HEADLIGHT

- 7" round sealed beam headlight by Wagner
- 12 Volt, 60/35W, replaces halogen, H6014/H6024, high and low beam functions
- Sold individually

30356

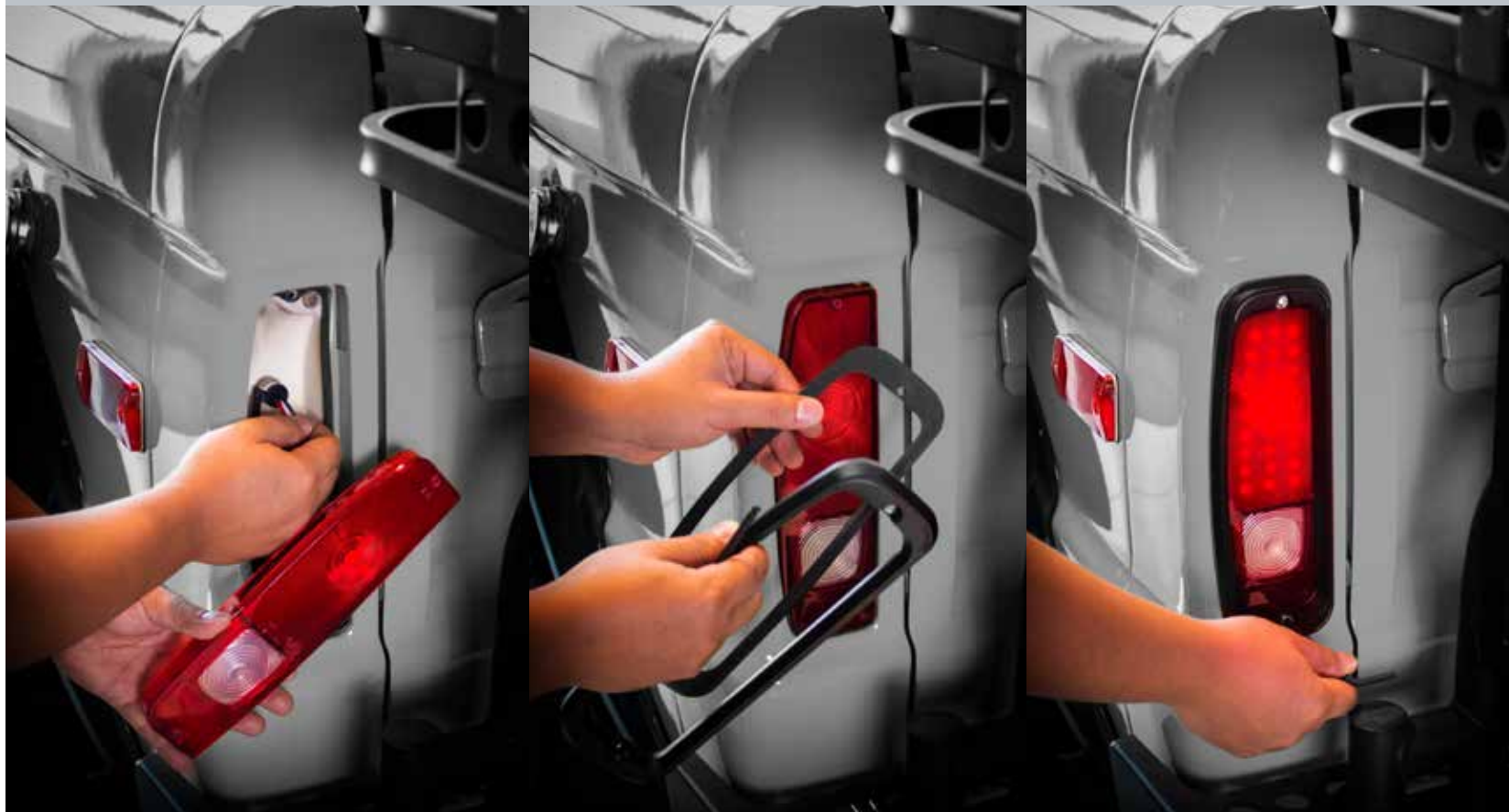
# LED TAIL LIGHT & BEZEL UPGRADE



1. Unscrew and remove lens

2. Remove halogen bulb

3. Insert LED Upgrade Board onto Lens

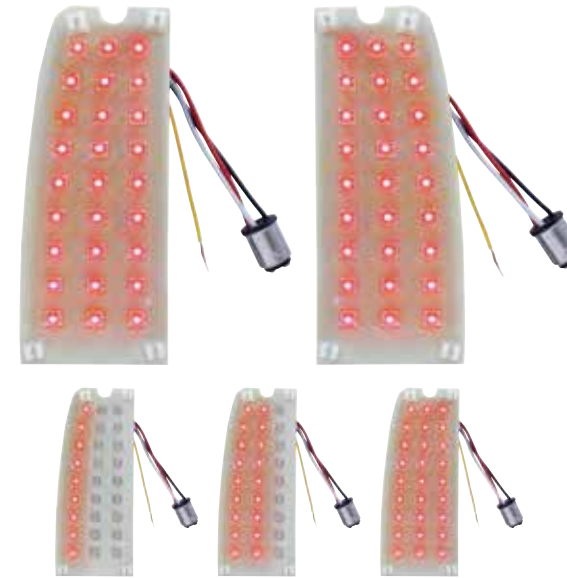


4. Plug in Sequential Tail Light

5. Install Tail Light Lens Gasket and Bezel

6. Install complete

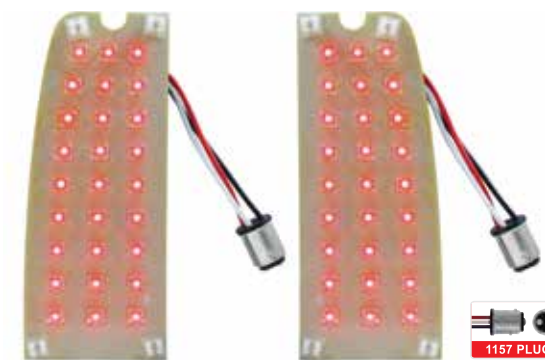
# TAIL LIGHT BEZELS/LENS



**SEQUENTIAL F.L.A.S.H.** **BRAKE ATTENTION** 1157 PLUG

## 1967-77 FORD BRONCO & 1967-72 FORD TRUCK LED SEQUENTIAL TAIL LIGHT INSERT BOARDS

- Super bright led circuit board installs behind existing lens
  - Dual function with tail light & bright stop/turn signal
  - Features sequential operation with selector switch to select sequential function ON/OFF
  - Features sequential once brake attention function
  - Easy electrical connection with 1157 plug, no modification
  - Requires United Pacific LED turn signal flasher, item # 90652
  - Sold in pairs
- 110497**



## 1966-77 FORD BRONCO & 1967-72 FORD TRUCK LED TAIL LIGHT INSERT BOARDS

- Super bright LED circuit board installs behind existing lens
  - Dual function with tail light & bright stop/turn signal
  - Epoxy coated, fully sealed electronics
  - Easy electrical connection with 1157 plug, no modification
  - Requires United Pacific LED turn signal flasher, item # 90652
  - Sold in pairs or individually
- FTL6772LED-PR | Pair**  
**FTL6772LED-L | Left**  
**FTL6772LED-R | Right**



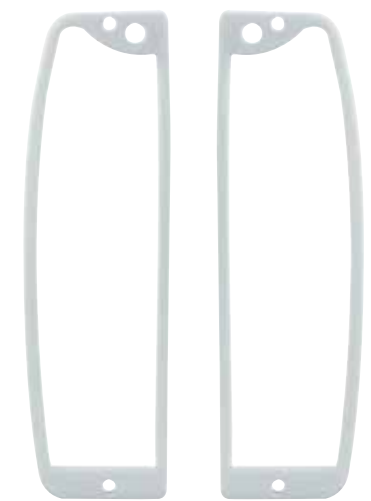
## 1966-77 FORD BRONCO

### BILLET ALUMINUM TAIL LIGHT BEZELS

- CNC milled out of a single solid aluminum block
- Durable anodized for a tough off-road look
- Fits to the original tail light lens mounting holes
- Foam gaskets and socket head screws included
- Sold as set

**110583 | CLEAR ANODIZED**

**110584 | SATIN BLACK ANODIZED**



## 1966-77 FORD BRONCO

### TAIL LIGHT LENS GASKET

- Fits between tail light housing and lens
  - White foam rubber as original
  - Sold in pairs
- F677203**

## TAIL LIGHTS



1978-79 FORD BRONCO

### TAIL LIGHT LENS

- Great looking replacement lens
- Injection molded from high quality polycarbonate plastic
- Sold individually, please specify driver side or passenger side

110112 | Driver LH

110113 | Passenger RH



1987-89 FORD BRONCO & STYLESIDE TRUCK

### TAIL LIGHT ASSEMBLY

- Great looking replacement lens for 1987-89 full size Bronco & Styleside Truck
- Sold individually, please specify driver side or passenger side

110170 | Driver LH

110171 | Passenger RH

1990-96 FORD BRONCO & STYLESIDE TRUCK

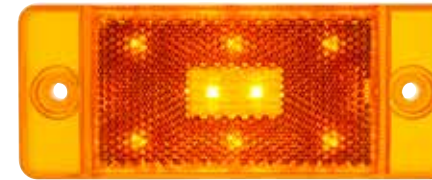
### TAIL LIGHT ASSEMBLY

- Great looking replacement lens for 1990-96 full size Bronco & Styleside Truck
- High quality injection molded polycarbonate lens
- Fully assembled for easy and straight forward replacement
- Sold individually, please specify driver side or passenger side

110172 | Driver LH

110173 | Passenger RH

## LED PARKING LIGHTS



1970-77 FORD BRONCO

### LED PARKING/SIGNAL LIGHT-FRONT

- 8 LED dual function, parking light and turn signal
- Super bright amber LED with amber acrylic lens
- Epoxy coated, fully sealed electronics
- Fits left hand and right hand

110804 | AMBER



1970-77 FORD BRONCO

### LED PARKING/SIGNAL LIGHT-REAR

- 8 LED dual function, parking light and turn signal
- Super bright amber LED with red acrylic lens
- Epoxy coated, fully sealed electronics
- Fits left hand and right hand

110805 | RED



1969-77 FORD BRONCO

### LED PARKING/SIGNAL LIGHT

- 35 LED dual function, parking light and turn signal
- Super bright amber LED with amber acrylic lens
- Epoxy coated, fully sealed electronics, 1157 plug
- Fits left hand and right hand
- Also fits 1959-64 Ford F100, F250, F350, and 1968-74 Econoline

110382 | LED Parking/Signal Light

110803 | Front Parking Light Gasket



## CONVENIENT GOODS



### AIR COMPRESSOR AND TANK KIT

- High volume reciprocating compressor with 1.5 gallon tank
  - Powerful motor fills aux tank from empty to full in just 2 minutes
  - Pre-installed top mount pressure gauge and auto on/off sensor to ensure the tank is always full and ready
  - Drain valve with t-handle located directly under the tank
  - Coiled nylon air hose included with fittings
  - 140 psi for air horns, on-board air applications & off-road use
  - Compressor & tank can be stacked together, or mounted separately
- 46154**



## ACCESSORIES/T-SHIRTS



### BRONCO KEYCHAIN/BOTTLE OPENER

- Quality chrome plated die cast with triple chrome plating process
  - Heavy duty, quality you can feel
  - Round split keychain ring included
- 99102**



### UNITED PACIFIC LB T-SHIRT

- 100% cotton fatigue green t-shirt
  - 1 color front print
- 99180M | MEDIUM**  
**99180L | LARGE**  
**99180XL | X-LARGE**  
**99180XXL | XX-LARGE**



**10 Quarts**  
Capacity



**23 Quarts**  
Capacity



### DA COOLBOX THERMOELECTRIC COOLER/WARMER

- Da CoolBox 10 Quart thermoelectric cooler/warmer
  - Cools without ice, making more space for food and drinks
  - Great for travel to keep your contents fresh and dry
  - Shoulder strap for easy transportation
  - USB charging port for mobile devices
  - Selector switch for cool/heat
  - Solid, strong exterior for added durability
- 99121**



### DA COOLBOX THERMOELECTRIC COOLER/WARMER

- Da CoolBox 23 Quart thermoelectric cooler/warmer
  - Cools without ice, making more space for food and drinks
  - Great for travel to keep your contents fresh and dry
  - Shoulder strap for easy transportation
  - USB charging port for mobile devices
  - Digital LCD display and temperature adjustment control
  - Solid, strong exterior for added durability
- 99122**



### PINSTRIP T-SHIRT

- 100% cotton black t-shirt
  - 1 color front print, 4 color back print
- 99082M | MEDIUM**  
**99082L | LARGE**  
**99082XL | X-LARGE**  
**99082XXL | XX-LARGE**



### BRONCO T-SHIRT

- United Pacific SEMA 2018 Ford Bronco concept graphic
  - 100% cotton black t-shirt, 1 color front print, 4 color back print
- 99129M | MEDIUM**  
**99129L | LARGE**  
**99129XL | X-LARGE**  
**99129XXL | XX-LARGE**



## Terms & Conditions for Wholesale

### New Accounts

Initial buy-in amount and/or quantity is to be determined by United Pacific Industries, UPI hereafter. All initial orders must be prepaid in advance by Cashier's Check or VISA/MC/AMX. All new/potential accounts must complete a UPI "New Dealer Info/Credit Form" and follow the Dealer Qualification Instructions. Upon completion of the credit application, approved accounts will be assigned payment terms of NET 30 Days (from invoice date). Accounts denied a credit line will be required to prepay in advance by Cashier's Check, ACH or Bank wire or VISA/MC/AMX.

### Payment Terms

Term Accounts: Accounts with NET 30 Days terms are required to submit payment within the 30 days from the date of invoice. Acceptable forms of payment include checks, ACH (Automated Clearing House), or wire transfer.

A service charge of 1.5% per month will be imposed on invoices not paid within the 30-day term. Delinquent accounts will be required to pay Cash-In-Advance (CIA). Checks will be accepted but orders will not be released until the check is cleared by the bank. Past due invoices will delay current orders. Please check with UPI on your account status when placing an order.

### Credit Cards

Accounts denied credit terms may be given the option to pay by Visa, MasterCard or American Express. The credit card will be charged upon shipment. A 3% service fee will be added to the invoice. Credit card payments will not be accepted once an order has been shipped. UPI does not accept Discover card.

### COD

There is no COD payment offered.

### Returned Checks

A \$30.00 NSF (Non-Sufficient Fund) fee will be assessed on each incidence a check is returned to UPI.

## Ordering Guidelines

### Placing Orders

New orders and PO's may be placed by any of the following methods:

Fax: (888) 986-5988

E-mail: [antique@upauto.com](mailto:antique@upauto.com)

Telephone: In order to minimize errors, dealers are encouraged to submit their orders by fax or mail.

Telephone orders are generally not preferred as to minimize errors. Utilize one of the methods above for placing orders.

### Changes to Orders

Once orders are released for picking, changes are no longer possible. Dealers would have to submit a new PO for any additional items needed.

### Canceling Orders

Cancellation of Stock orders must be submitted via fax or email within 24 hours of the order date. If the Stock order has already shipped it will be the dealer's responsibility to return the order at the dealer's own expense. A restocking fee may apply, please see "Return" policy for further detail. Drop Ship orders cannot be cancelled due to the priority processing and shipping.

### Backorders

Dealers have the option of having their backorders shipped or cancelled. UPI will notify dealer as to availability of backorders and will be able to ship any backorder items dealer still needs as part of their next stock order. UPI reserves the right to cancel backorders that are 2 month or older from invoice date.

### Minimum Order

A minimum order of \$50.00 is required. Orders below \$50.00 will be assessed a minimum order fee of \$10.00.

### Packaging

A 10% service charge will be added to orders with special packaging or UPC barcoding requirements.

### Lead Times

Standard lead time for all United Pacific Stock orders is 5 business days from the receipt of the purchase order. Larger Stock orders may require a lead time of up to 7 business days. Drop Ship orders generally ship in 2 business days or less. Transit time of 3-5 business days must be considered when placing orders. UPI cannot be responsible for delays in shipment after an order leaves our warehouse. UPI will work to resolve delays with freight forwarding firms, however, delays do arise from time to time due to weather and unforeseen circumstances beyond UPI's control. Express orders are exempt; please view Freight/Shipping Policy for further detail.

### Order Confirmation

United Pacific will acknowledge receipt of orders by email or EDI within 1 business day of receiving the PO. If confirmation is not received, please contact UPI to ensure your order was received.

## Freight

### Prepaid Freight

Stock orders between \$.01 and \$1,999.99 (US Lower 48 States and Canada), \$.01 and \$3,299.99 (Alaska and Hawaii), [all price net US\$], will be shipped FOB Long Beach, California. Stock orders of \$2,000.00 (US Lower 48 States and Canada), \$3,300.00 (Alaska and Hawaii), [all price net US\$], or more will be shipped Freight Prepaid Ground to a single location only. Exclusions on prepaid: 1) Grille Guard (item# 80000) will always ship FOB Long Beach. 2) Express NDA and 2-day orders, Special Net Pricing orders, and Special Quote Pricing orders ship FOB Long Beach. All drop shipment orders will be assessed a 5% processing fee. Drop shipment processing fee will be automatically added to the invoice without notice. No freight allowance or prepaid freight will be permitted for any drop shipment. All drop ship orders, regardless of order size, are FOB Long Beach, CA. A minimum order of \$50.00 is required. Orders below \$50.00 will

be assessed a minimum order fee of \$10.00. United Pacific reserves the right to select the carrier of our choice. Freight paid orders do not include extra services such as liftgate fee.

### Will Call Orders

Will Call orders can be picked up in 1-3 days after placing the order. Dealers will receive their scheduled pick-up time in the order confirmation. Dealers should always call ahead to confirm when order will be ready. Sorry no same-day pick-up allowed. Will Call hours are 8:30AM - 4:00PM PST.

## Shipping Policy

### International Shipments

Shipments to locations outside the continental United States will be shipped to the dealer's shipping agent or broker within the continental United States in accordance with the US freight policy. International dealers will be responsible for the duties and taxes of their respective country.

### Express Orders

All express orders, such as Next Day, Second Day, 3 Day Service & Will Call, must be emailed, faxed, or sent via EDI. Order confirmation will be sent to the dealer for final approval. If confirmation is not received, please contact UPI to ensure your order was received. Dealers are required to sign off on express orders and send confirmation back to UPI. Cut off for express order is 10:00AM PST (Pacific Standard Time). Express orders received after 10:00AM PST will ship the next business day. Please contact UPI to confirm projected shipping date or will call time. Due to the high cost of express shipments, dealer may request UPI to notify them of freight charges. If dealer does not request confirmation, UPI will ship the express order.

### Drop Shipments

All drop shipment orders will be assessed a 5% handling fee and will be automatically added to the invoice without notice. All drop shipment orders must be emailed, faxed, or sent via EDI. No freight allowance or prepaid freight will be permitted for any drop shipment; thus, all drop ship orders regardless of order size, are FOB Long Beach, CA.

## Claims

### General Policy

All claims (Shortage, Mis-Shipped, Damage, Overage, Dealer Error & Billing Error) must be submitted to UPI within 3 business days of the receipt of shipment. Claims submitted beyond 3 business days of the receipt of shipment will be voided by UPI.

On all shipments, the person who signs and receives the shipment is responsible for noting on the Bill of Lading, in writing, whether any boxes arrived damaged or shorted. Failure to do so will void all claim rights between all parties. UPI will have no recourse against the trucking company if dealer does not note any damages or shortages on the Bill of Lading.

The dealer's receiving department must count and sign for the exact number of boxes received. Failure to follow the above instructions will void all claim rights between all parties.

### Shortages / Mis-Ships / Damages

While UPI strives to fill every order with 100% accuracy, on occasion an item may get shipped in error or get damaged during shipping. In the event this occurs, please follow the process below. Note: This type of claim must be reported to UPI within three (3) business days of receiving the order.

1. Contact the United Pacific office to initiate the claim. To make it easy for you we have two acceptable methods for requesting the claim:

By e-mail : [returns@upauto.com](mailto:returns@upauto.com)

By fax : (888) 986-5988

**Note: To ensure you receive a timely credit, we cannot accept claim requests by phone.**

2. You will be required to provide the following information:

Your business name

Contact name and telephone number (in case we have questions)

Date the order was received

A copy of the Packing List / Invoice noting the item number and quantity that was shipped in error or damaged during shipping.

Special instructions you have for us.

3. UPI will send a return label so you can ship the items back.

4. Once we receive the miss-shipped/damaged item(s) a credit will be issued to your account on the next billing cycle.

Shortages will be credit to the Dealers' account, unless dealer would like the shortages replaced.

### Overages

UPI strives to provide our dealers with the best dealer service and products, in turn we would greatly appreciate any help from dealer in notifying UPI of any shipping overages. Dealers will be offered the option of retaining the merchandise or returning the merchandise to UPI at UPI's expense. If the items are to be returned, an RMA number and return shipping label will be provided.

### Dealer Errors

Any item or quantity ordered in error by the dealer may be returned by contacting UPI for a RMA number.

1. We have two acceptable methods for requesting the RMA:

By e-mail : [returns@upauto.com](mailto:returns@upauto.com)

By fax : (888) 986-5988

**Note: To ensure you receive a timely credit, we cannot accept claim requests by phone.**

2. You will be required to provide the following information.

Your business name

Contact name and telephone number (in case we have questions)

A list of the items number and quantity ordered in error

Special instructions you have for us

3. UPI will review the request to ensure the products are within the return period.

4. Once we have validated the request, United Pacific will issue an RMA number to the dealer. In issuing the RMA approval, the following conditions will apply:

Returned items are subject to a 20% re-stocking fee.

Return shipping costs are the responsibility of the dealer.

Items must not have any retail/price sticker on exterior package/box/card or they will be returned to the dealer at dealer's expense and no credit given.

Items must be in good condition with original packaging intact, unblemished and in re-sellable condition, or they will be returned to the dealer at dealer's expense and no credit given.

Allow up to 30 days for the credit to be issued from the time the returned items are received.

#### Billing Errors

Billing errors should be reported to UPI within 3 business days of invoice receipt. Dealers are asked to provide the invoice number, part number, and quantities in question. Once verified, UPI will issue a credit or an invoice for the difference in billing error.

## Warranty

#### General Policy

UPI offers a NO HASSLE WARRANTY RETURN policy. Warranty claims can only be submitted through an authorized UPI Distributor. UPI warranty is not transferable and applies to the original installation and purchase only. UPI warranty varies by product and each item's warranty period is stated on UPI's product web page. In no event shall UPI be liable for incidental or consequential damages, nor shall UPI be liable for any claims or damages arising out of or connected with the UPI warranty which exceed the purchase price of the products.

There are no warranties, expressed or implied (including any warranty of merchantability or fitness) that extend beyond this warranty.

The warranty does not apply to costs associated with the loss of use of the product, loss of time, inconvenience, commercial loss, incidental or consequential damages. The warranty does not apply to products which are damaged or made defective by faulty or incorrect installation. UPI reserves the right to alter the designs of products without assuming any obligation to modify previously manufactured products and will only replace warrantied products with redesigned products.

Warranty does not apply to merchandise that has been drilled, cut, welded, modified in any way or installed contrary to normal installation and usage. In addition, UPI cannot be held liable for damages caused by road hazards, accidents, misuse, neglect, water intrusion, abuse or corrosive environments including acid washes and highway snow/ice chemicals which can cause discoloration and corrosion in aluminum, chrome, stainless steel and light products. UPI reserves the right to credit returned merchandise at the initial purchase price or at the current selling price, which price ever is lower.

#### Aluminum / Chrome / Stainless Steel Products

Aluminum, chrome, and stainless steel products carry either a limited 6 month warranty, or a limited 1 year warranty (from invoice date) against defects in material or workmanship. Check the product page on our website for specific warranty period.

All Grill Guards (Item # 80000): A) Stainless Steel Materials and factory workmanship of the product itself carry a Limited Lifetime warranty. B) The Stainless steel polish and finish has a 12 month warranty. C) This warranty is provided only to the original purchaser/consumer, and on the original installation. Warranty is not transferable. Product failure or breakage due to accident/wreck or improper installation is not covered.

All mounting kits (Item # 80001, 80002, 80003, 80004, 80005): A) Steel Materials and factory workmanship on the sub-assembly bracket are Lifetime warranty. B) The painted or zinc finish has a 12 month warranty. C) Any ancillary components and parts (e.g. washers, bolts, spacers, etc.) which are not part of the sub-assembly, carry a 12 month warranty. D) This Warranty is provided only to the original purchaser/consumer, and on the original installation. Warranty is not transferable. Product failure or breakage due to accident/wreck or improper installation is not covered.

#### Train Horns/Whistles

UPI will not warranty damages or discolorations caused by road hazards, accidents, misuse, or corrosive chemicals, including, acid washes and highway snow/ice solvents. Corrosive chemicals will cause discoloration. UPI will only warranty horns mounted horizontally behind the CAB/SLEEPER on the frame deck. UPI will NOT warranty horns mounted upside down or underneath of the truck. Mounting horns upside down or underneath the truck will

subject the horns to road hazards & debris. This product is intended solely for the purpose of Off-road use. Check federal laws and/or regulations in your state, county, and/or municipality regarding installation and use of this product.

#### Lighting Products

Incandescent Lighting:

All incandescent lighting products carry a limited 12 month warranty (from invoice date) against defects in material or workmanship. The limited 12 month warranty does not apply to several applications, such as, buses, construction equipment, and off road vehicles.

LED Lighting:

All LED lighting products carry a specific Limited Warranty (from invoice date) against defects in material or workmanship.

LED with vehicle specific application is limited lifetime warranty to an original purchaser with receipt. Examples of lifetime warranty product: CTL5720LED CTL5720LED for 1957 Chevy, FTL3201LED-L for 1932 Ford.

LED Marker, 2", 2-1/2", 4", 7", Oval & Square Lights - Varies from 2 years to 10 years to Limited Lifetime, depending on specific item.

The housing, bezel or mounting base on any light made from Chrome/Stainless carries a 6 month limited warranty.

LED Cab Lights and Kits, Double/Single Stud Turn Signal and PB/ KW/FL/VL or non-make Turn Signals and any/all Strip Lights - Varies from 2 years to 10 years to Limited Lifetime, depending on specific item. The housing, bezel or mounting base on any light made from Chrome/Stainless carries a 6 month limited warranty.

LED Beacon, Driving, Headlights, Work & Warning Lights - Varies from 6 months to 3 years. The housing, bezel or mounting base on any light made from Chrome/Stainless carries a 6 month limited warranty.

All LED Accessory Lights (Honda, Stainless Steel Double/Single face Lights, Interior Lights, License Plate Lights, and any Accent Lights.

The housing, bezel or mounting base on any light made from Chrome/Stainless carries a 6 month limited warranty.

For any product that contains any type of light or LED, whether it is a stand alone light or LED, or part of a larger assembled item (e.g., Rear light panel), modifying electrical wiring, sockets, lighting pigtailed and any electrical connection from the original configuration will

void the warranty of both wiring, pigtail and the light or LED unit and cannot be warrantied.

## Returns

#### General Policy

All returns must be authorized by UPI. All return requests must be faxed or e-mailed (returns@upauto.com). A RMA number (Return Merchandise Authorization Number) will be provided. Returns not possessing a valid RMA number are subject to rejection and will be returned to sender at the dealer's expense.

All dealers are encouraged to use the Warranty RMA Claim Form.

#### Defective Goods / Warranty Return

UPI offers our dealers a No Hassle Warranty Return. Please follow the instructions below for requesting a RMA for defective goods:

1. If any warranty issues occur, simply contact the UPI for RMA number. To make it easy for you we have three acceptable methods for requesting the RMA.

Email: [returns@upauto.com](mailto:returns@upauto.com)

Fax: 888-986-5988

**Note- To ensure you receive a timely RMA credit, we cannot accept RMA requests by phone.**

2. You will be required to provide the following information:

Your business name

Contact name and telephone number (in case we have questions)

A list of the defective item number and quantity with the nature/reason of the defect

Special instructions you have for us

The enclosed fax form may be used for your convenience to request an RMA

3. UPI will review the request to ensure the products are within the stated warranty period.

4. Once we have validated the warranty items, a RMA confirmation, listing the items and cost will be faxed to the dealer within 3 business days. UPI will process the credit to your account within 30 days.

Note: The majority of time there will be no need to return the warranty product to us. However, from time to time, UPI may require some warranty products to be shipped back so we may analyze the cause of the failure. All warranty products that are required to be shipped back will be freight prepaid by UPI.

#### Stock Return

United Pacific Industries encourages all dealers to regularly monitor the sales volume and stock level of their inventory items. As sales trends may slow the movement of specific items, our hope is that those items are featured as "close-out specials" as to minimize stock returns. We also understand that the dealer, from time to time, may accumulate over-stock items and desire to return those. Therefore, we have adopted the following policy below.

#### NOTE:

Items must have been purchased by the dealer requesting the stock return.

Items must have been purchased within the preceding 12 months.

Items that have been discontinued will not be considered for return.

1. Contact the United Pacific for RMA number. We have 2 acceptable methods for requesting the RMA:

Email: [returns@upauto.com](mailto:returns@upauto.com)

Fax: 888-986-5988

**Note- To ensure you receive a timely RMA credit, we cannot accept RMA requests by phone.**

2. You will be required to provide the following information:

Your business name

Contact name and telephone number (in case we have questions)

A list of the defective item number and quantity with the nature/reason of the defect

Special instructions you have for us

3. Your claim will be reviewed within 5 business days and you will be contacted by your sales representative who will discuss solutions to liquidate these slow moving items.

4. In the event United Pacific and the dealer agree to a credit in lieu of returning the items, this credit will be issued within 10 business days.

5. In the event items are returned by the dealer, United Pacific will issue an RMA number to the dealer. Once the RMA is issued, the following conditions will apply:

Returned items are subject to a 20% re-stocking fee.

Return shipping costs are the responsibility of the dealer.

Items must not have any retail/price sticker on exterior package/box/card or they will be returned to the dealer at dealer's expense and no credit given.

Items must be in good condition with original packaging intact, unblemished and in re-sellable condition, or they will be returned to the dealer at dealer's expense and no credit given.

Allow up to 30 days for the credit to be issued from the time the returned items are received.

6. Stock returns may be requested throughout the year and are subject to final approval by United Pacific.

## Closeout / Discontinue

UPI will not warranty or accept returns on Closeout/Discontinue items.

#### Procedure:

An inventory of the merchandise being returned must accompany each return. The RMA number should be prominently displayed on each carton/box.

All Returns must be returned freight prepaid.





**United Pacific**

UPauto.com | T 866.327.5288 | F 888.986.6088

© 2022 United Pacific Industries. All Rights Reserved. Products not shown to scale. Specifications subject to change without notice.

**ACBR02**

1966-77 FORD BRONCO CATALOG  
2ND EDITION



710270061181